

Product datasheet

Anti-Ran antibody ab53775

★★★★★ [2 Abreviews](#) [9 References](#) [2 Images](#)

Overview

Product name	Anti-Ran antibody
Description	Rabbit polyclonal to Ran
Host species	Rabbit
Tested applications	Suitable for: ELISA, ICC/IF, WB, IHC-P
Species reactivity	Reacts with: Mouse, Rat, Human
Immunogen	Synthetic peptide derived from Human Ran
General notes	<p>The Life Science industry has been in the grips of a reproducibility crisis for a number of years. Abcam is leading the way in addressing this with our range of recombinant monoclonal antibodies and knockout edited cell lines for gold-standard validation. Please check that this product meets your needs before purchasing.</p> <p>If you have any questions, special requirements or concerns, please send us an inquiry and/or contact our Support team ahead of purchase. Recommended alternatives for this product can be found below, along with publications, customer reviews and Q&As</p>

Properties

Form	Liquid
Storage instructions	Shipped at 4°C. Upon delivery aliquot and store at -20°C. Avoid freeze / thaw cycles.
Storage buffer	pH: 7.40 Preservative: 0.02% Sodium azide Constituents: 50% Glycerol, 0.87% Sodium chloride, PBS
Purity	Immunogen affinity purified
Clonality	Polyclonal
Isotype	IgG

Applications

The Abpromise guarantee Our **Abpromise guarantee** covers the use of ab53775 in the following tested applications. The application notes include recommended starting dilutions; optimal dilutions/concentrations should be determined by the end user.

Application	Abreviews	Notes
ELISA		Use at an assay dependent concentration.
ICC/IF	★★★★★ (1)	Use at an assay dependent concentration. PubMed: 23308199
WB	★★★★★ (1)	1/500 - 1/1000. Detects a band of approximately 26 kDa (predicted molecular weight: 26 kDa).
IHC-P		Use at an assay dependent concentration.

Target

Function

GTP-binding protein involved in nucleocytoplasmic transport. Required for the import of protein into the nucleus and also for RNA export. Involved in chromatin condensation and control of cell cycle (By similarity). The complex with BIRC5/ survivin plays a role in mitotic spindle formation by serving as a physical scaffold to help deliver the RAN effector molecule TPX2 to microtubules. Enhances AR-mediated transactivation. Transactivation decreases as the poly-Gln length within AR increases.

Tissue specificity

Expressed in a variety of tissues.

Sequence similarities

Belongs to the small GTPase superfamily. Ran family.

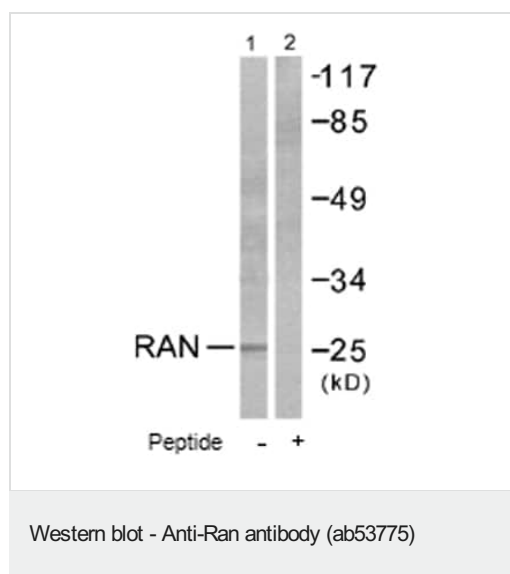
Post-translational modifications

The N-terminus is blocked.

Cellular localization

Nucleus. Cytoplasm. Melanosome. Becomes dispersed throughout the cytoplasm during mitosis. Identified by mass spectrometry in melanosome fractions from stage I to stage IV.

Images



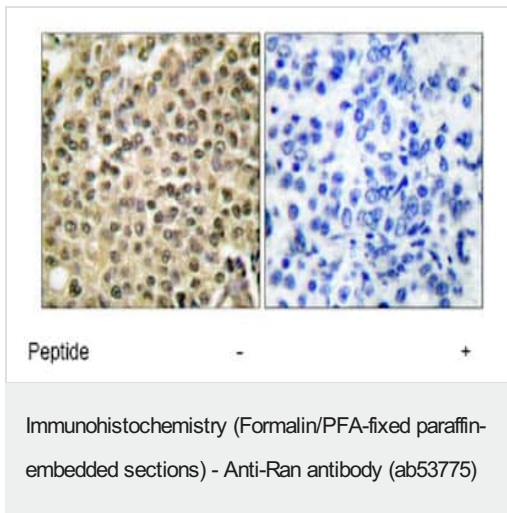
All lanes : Anti-Ran antibody (ab53775) at 1/500 dilution

Lane 1 : Extracts from LOVO cells

Lane 2 : Extracts from LOVO cells, plus immunising peptide

Predicted band size: 26 kDa

Observed band size: 26 kDa



Immunohistochemical analysis of paraffin-embedded human breast carcinoma tissue using ab53775 at a 1/50 dilution.

Left image un-treated.

Right image treated with immunizing peptide.

Please note: All products are "FOR RESEARCH USE ONLY. NOT FOR USE IN DIAGNOSTIC PROCEDURES"

Our Abpromise to you: Quality guaranteed and expert technical support

- Replacement or refund for products not performing as stated on the datasheet
- Valid for 12 months from date of delivery
- Response to your inquiry within 24 hours
- We provide support in Chinese, English, French, German, Japanese and Spanish
- Extensive multi-media technical resources to help you
- We investigate all quality concerns to ensure our products perform to the highest standards

If the product does not perform as described on this datasheet, we will offer a refund or replacement. For full details of the Abpromise, please visit <https://www.abcam.com/abpromise> or contact our technical team.

Terms and conditions

- Guarantee only valid for products bought direct from Abcam or one of our authorized distributors