

Product datasheet

Anti-RAP1GDS1 antibody ab67722

3 Images

Overview

Product name	Anti-RAP1GDS1 antibody
Description	Mouse polyclonal to RAP1GDS1
Host species	Mouse
Tested applications	Suitable for: WB, ICC/IF
Species reactivity	Reacts with: Human
Immunogen	Recombinant full length protein within Human RAP1GDS1. The exact immunogen sequence used to generate this antibody is proprietary information. If additional detail on the immunogen is needed to determine the suitability of the antibody for your needs, please contact our Scientific Support team to discuss your requirements.
Positive control	Liver. HeLa cells.
General notes	<p>The Life Science industry has been in the grips of a reproducibility crisis for a number of years. Abcam is leading the way in addressing this with our range of recombinant monoclonal antibodies and knockout edited cell lines for gold-standard validation. Please check that this product meets your needs before purchasing.</p> <p>If you have any questions, special requirements or concerns, please send us an inquiry and/or contact our Support team ahead of purchase. Recommended alternatives for this product can be found below, along with publications, customer reviews and Q&As</p>

Properties

Form	Liquid
Storage instructions	Shipped at 4°C. Upon delivery aliquot and store at -20°C or -80°C. Avoid repeated freeze / thaw cycles.
Storage buffer	pH: 7.40 Constituent: 100% PBS
Purity	Protein A purified
Clonality	Polyclonal
Isotype	IgG

Applications

The Abpromise guarantee

Our **Abpromise guarantee** covers the use of ab67722 in the following tested applications.

The application notes include recommended starting dilutions; optimal dilutions/concentrations should be determined by the end user.

Application	Abreviews	Notes
WB		
ICC/IF		

Application notes

ICC/IF: Use at a concentration of 10 µg/ml. Note: the product requires protein A purification prior to use for ICC/IF.

WB: 1/500 - 1/1000. Detects a band of approximately 66 kDa (predicted molecular weight: 66 kDa).

Not yet tested in other applications.

Optimal dilutions/concentrations should be determined by the end user.

Target

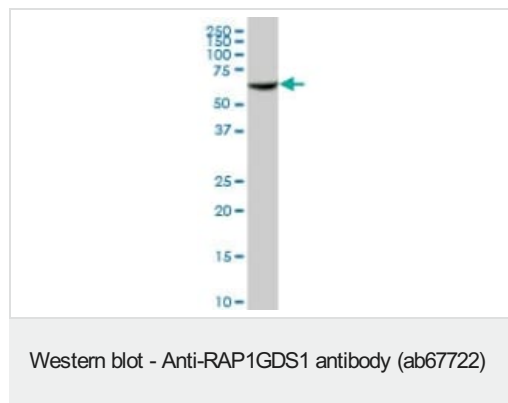
Function

Stimulates GDP/GTP exchange reaction of a group of small GTP-binding proteins (G proteins) including Rap1a/Rap1b, RhoA, RhoB and KRas, by stimulating the dissociation of GDP from and the subsequent binding of GTP to each small G protein.

Sequence similarities

Contains 5 ARM repeats.

Images



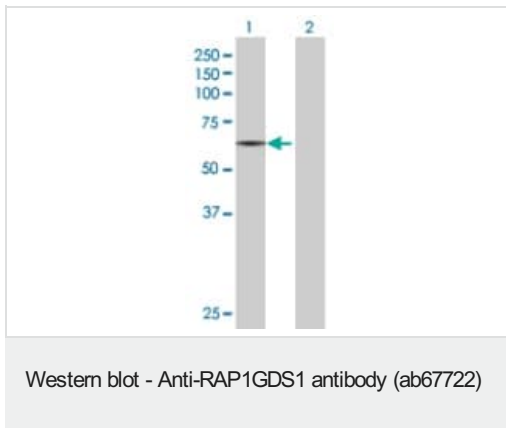
Anti-RAP1GDS1 antibody (ab67722) at 1/500 dilution + human liver lysate at 25 µg

Secondary

Goat anti-mouse IgG (H&L)-HRP conjugated at 1/2500 dilution

Predicted band size: 66 kDa

Observed band size: 66 kDa



All lanes : Anti-RAP1GDS1 antibody (ab67722) at 1/500 dilution

Lane 1 : RAP1GDS1 transfected lysate

Lane 2 : Non-transfected lysate

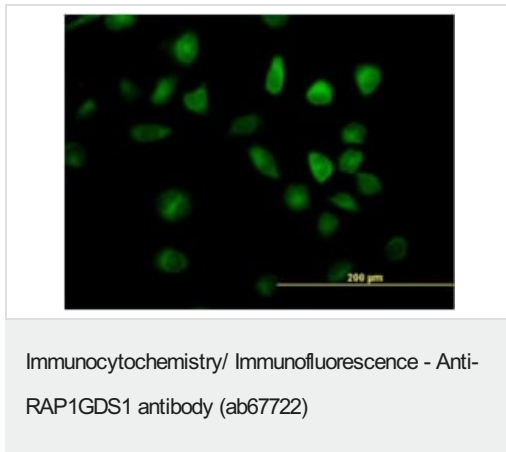
Lysates/proteins at 25 µg per lane.

Secondary

All lanes : Goat anti-mouse IgG (H&L)-HRP conjugated at 1/2500 dilution

Predicted band size: 66 kDa

Observed band size: 66 kDa



Immunofluorescence analysis of RAP1GDS1 expression on HeLa cell using purified ab67722 at 10 µg/ml.

Please note: All products are "FOR RESEARCH USE ONLY. NOT FOR USE IN DIAGNOSTIC PROCEDURES"

Our Abpromise to you: Quality guaranteed and expert technical support

- Replacement or refund for products not performing as stated on the datasheet
- Valid for 12 months from date of delivery
- Response to your inquiry within 24 hours
- We provide support in Chinese, English, French, German, Japanese and Spanish
- Extensive multi-media technical resources to help you
- We investigate all quality concerns to ensure our products perform to the highest standards

If the product does not perform as described on this datasheet, we will offer a refund or replacement. For full details of the Abpromise, please visit <https://www.abcam.com/abpromise> or contact our technical team.

Terms and conditions

- Guarantee only valid for products bought direct from Abcam or one of our authorized distributors