


Product datasheet

Anti-RASA4 antibody [EPR10515] ab157190

Recombinant RabMAb

8 Images

Overview

Product name	Anti-RASA4 antibody [EPR10515]
Description	Rabbit monoclonal [EPR10515] to RASA4
Host species	Rabbit
Tested applications	Suitable for: WB, IHC-P Unsuitable for: ICC/IF or IP
Species reactivity	Reacts with: Mouse, Human Predicted to work with: Rat 
Immunogen	Synthetic peptide. This information is proprietary to Abcam and/or its suppliers.
Positive control	Human skeletal muscle, HepG2, 293T and HeLa cell lysates; Human brain and skeletal muscle tissues.
General notes	<p>This product is a recombinant monoclonal antibody, which offers several advantages including:</p> <ul style="list-style-type: none">- High batch-to-batch consistency and reproducibility- Improved sensitivity and specificity- Long-term security of supply- Animal-free production <p>For more information see here.</p> <p>Our RabMAb[®] technology is a patented hybridoma-based technology for making rabbit monoclonal antibodies. For details on our patents, please refer to RabMAb[®] patents.</p>

Properties

Form	Liquid
Storage instructions	Shipped at 4°C. Store at -20°C.
Storage buffer	pH: 7.2 Preservative: 0.01% Sodium azide Constituents: 9% PBS, 40% Glycerol (glycerin, glycerine), 0.05% BSA, 50% Tissue culture supernatant
Purity	Protein A purified
Clonality	Monoclonal

Clone number EPR10515

Isotype IgG

Applications

The Abpromise guarantee Our **Abpromise guarantee** covers the use of ab157190 in the following tested applications.

The application notes include recommended starting dilutions; optimal dilutions/concentrations should be determined by the end user.

Application	Abreviews	Notes
WB		1/1000 - 1/5000. Predicted molecular weight: 90 kDa.
IHC-P		1/50 - 1/100. Perform heat mediated antigen retrieval before commencing with IHC staining protocol.

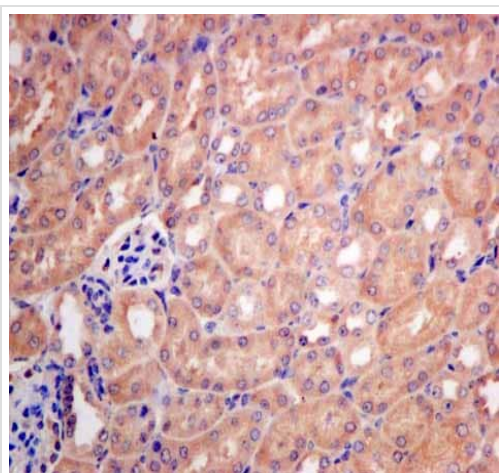
Application notes Is unsuitable for ICC/IF or IP.

Target

Relevance RASA4 is a Ca(2+)-dependent Ras GTPase-activating protein, that switches off the Ras-MAPK pathway following a stimulus that elevates intracellular calcium.

Cellular localization Cytoplasm; cytosol. Cell membrane; peripheral membrane protein. Note=Localized to the cytosol as a result of its lack of phosphoinositide binding activity. Upon agonist-stimulated calcium mobilization, utilizes the C2A and C2B domains to associate with the plasma membrane.

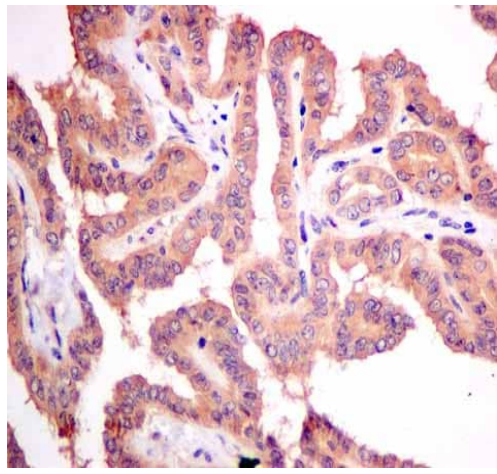
Images



ab157190 showing +ve staining in Mouse kidney.

Perform heat mediated antigen retrieval before commencing with IHC staining protocol.

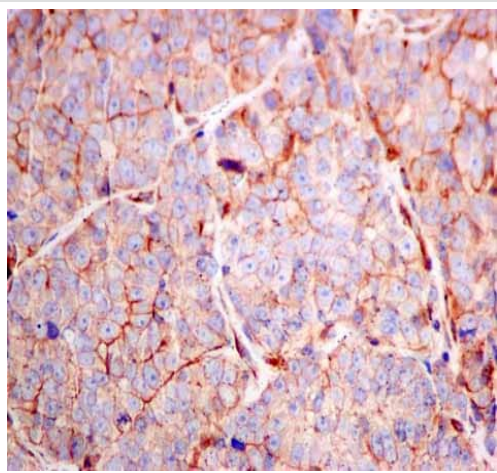
Immunohistochemistry (Formalin/PFA-fixed paraffin-embedded sections) - Anti-RASA4 antibody [EPR10515] (ab157190)



Immunohistochemistry (Formalin/PFA-fixed paraffin-embedded sections) - Anti-RASA4 antibody [EPR10515] (ab157190)

ab157190 showing +ve staining in Human thyroid gland carcinoma.

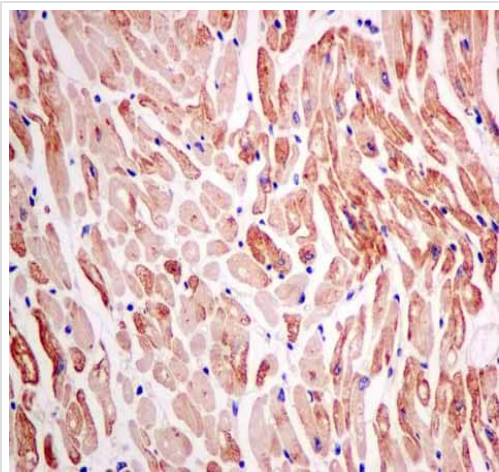
Perform heat mediated antigen retrieval before commencing with IHC staining protocol.



Immunohistochemistry (Formalin/PFA-fixed paraffin-embedded sections) - Anti-RASA4 antibody [EPR10515] (ab157190)

ab157190 showing +ve staining in Human ovarian carcinoma.

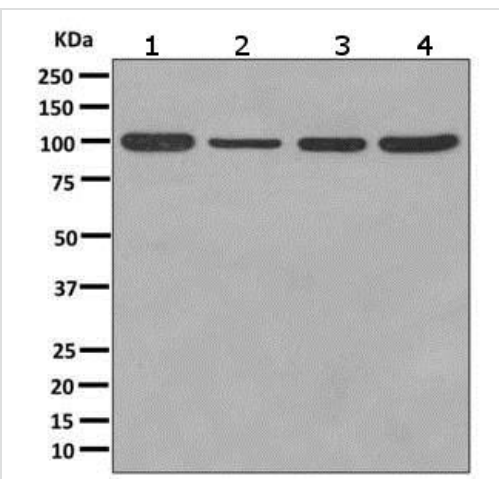
Perform heat mediated antigen retrieval before commencing with IHC staining protocol.



Immunohistochemistry (Formalin/PFA-fixed paraffin-embedded sections) - Anti-RASA4 antibody [EPR10515] (ab157190)

ab157190 showing +ve staining in Human heart.

Perform heat mediated antigen retrieval before commencing with IHC staining protocol.



Western blot - Anti-RASA4 antibody [EPR10515] (ab157190)

All lanes : Anti-RASA4 antibody [EPR10515] (ab157190) at 1/1000 dilution

Lane 1 : Human skeletal muscle lysate

Lane 2 : HepG2 cell lysate

Lane 3 : 293T (Human embryonic kidney epithelial cell) cell lysate

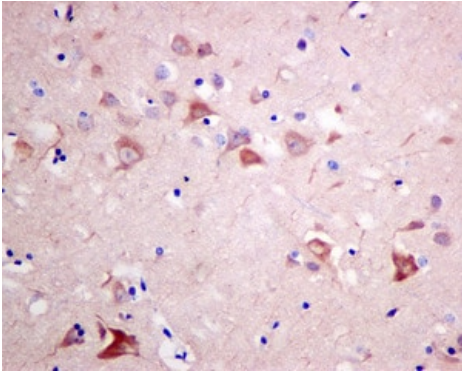
Lane 4 : HeLa cell lysate

Lysates/proteins at 10 µg per lane.

Secondary

All lanes : Goat anti-rabbit HRP at 1/2000 dilution

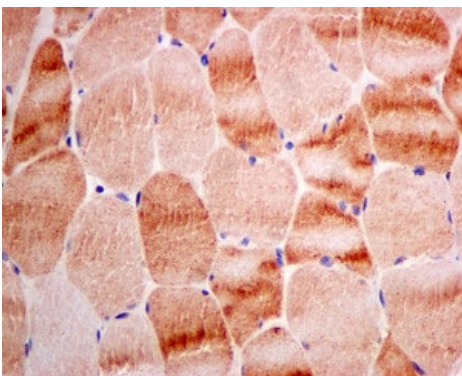
Predicted band size: 90 kDa



Immunohistochemistry (Formalin/PFA-fixed paraffin-embedded sections) - Anti-RASA4 antibody [EPR10515] (ab157190)

Immunohistochemical analysis of paraffin-embedded Human brain tissue labeling RASA4 with ab157190 at 1/50 dilution.

Perform heat mediated antigen retrieval before commencing with IHC staining protocol.




Immunohistochemistry (Formalin/PFA-fixed paraffin-embedded sections) - Anti-RASA4 antibody [EPR10515] (ab157190)


Immunohistochemical analysis of paraffin-embedded Human skeletal muscle labeling RASA4 with ab157190 at 1/50 dilution.

Perform heat mediated antigen retrieval before commencing with IHC staining protocol.

Why choose a recombinant antibody?

- 

Research with confidence
Consistent and reproducible results
- 

Long-term and scalable supply
Recombinant technology
- 

Success from the first experiment
Confirmed specificity
- 

Ethical standards compliant
Animal-free production

Anti-RASA4 antibody [EPR10515] (ab157190)

Please note: All products are "FOR RESEARCH USE ONLY. NOT FOR USE IN DIAGNOSTIC PROCEDURES"

Our Abpromise to you: Quality guaranteed and expert technical support

- Replacement or refund for products not performing as stated on the datasheet
- Valid for 12 months from date of delivery
- Response to your inquiry within 24 hours

- We provide support in Chinese, English, French, German, Japanese and Spanish
- Extensive multi-media technical resources to help you
- We investigate all quality concerns to ensure our products perform to the highest standards

If the product does not perform as described on this datasheet, we will offer a refund or replacement. For full details of the Abpromise, please visit <https://www.abcam.com/abpromise> or contact our technical team.

Terms and conditions

- Guarantee only valid for products bought direct from Abcam or one of our authorized distributors