




Product datasheet

Anti-RASSF5 antibody ab218191

[1 Image](#)

Overview

Product name	Anti-RASSF5 antibody
Description	Rabbit polyclonal to RASSF5
Host species	Rabbit
Tested applications	Suitable for: IHC-P
Species reactivity	Reacts with: Rat Predicted to work with: Mouse, Human 
Immunogen	Synthetic peptide within Human RASSF5 aa 350 to the C-terminus conjugated to keyhole limpet haemocyanin. The exact immunogen sequence used to generate this antibody is proprietary information. If additional detail on the immunogen is needed to determine the suitability of the antibody for your needs, please contact our Scientific Support team to discuss your requirements. Database link: Q8WWWO  Run BLAST with  Run BLAST with
Positive control	IHC-P: Rat spleen tissue.
General notes	<p>The Life Science industry has been in the grips of a reproducibility crisis for a number of years. Abcam is leading the way in addressing this with our range of recombinant monoclonal antibodies and knockout edited cell lines for gold-standard validation. Please check that this product meets your needs before purchasing.</p> <p>If you have any questions, special requirements or concerns, please send us an inquiry and/or contact our Support team ahead of purchase. Recommended alternatives for this product can be found below, along with publications, customer reviews and Q&As</p>

Properties

Form	Liquid
Storage instructions	Shipped at 4°C. Store at +4°C short term (1-2 weeks). Upon delivery aliquot. Store at -20°C long term. Avoid freeze / thaw cycle.
Storage buffer	pH: 7.40 Preservative: 0.02% Proclin 300 Constituents: 50% Glycerol (glycerin, glycerine), 1% BSA, 48.98% TBS, 1X Aqueous buffered solution

Purity	Protein A purified
Clonality	Polyclonal
Isotype	IgG

Applications

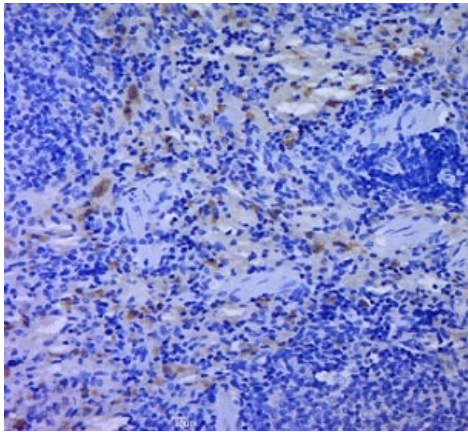
The Abpromise guarantee Our **Abpromise guarantee** covers the use of ab218191 in the following tested applications. The application notes include recommended starting dilutions; optimal dilutions/concentrations should be determined by the end user.

Application	Abreviews	Notes
IHC-P		1/100 - 1/500. Perform heat mediated antigen retrieval with citrate buffer pH 6 before commencing with IHC staining protocol.

Target

Function	Potential tumor suppressor. Seems to be involved in lymphocyte adhesion by linking RAP1A activation upon T cell receptor or chemokine stimulation to integrin activation. Isoform 2 stimulates lymphocyte polarization and the patch-like distribution of ITGAL/LFA-1, resulting in an enhanced adhesion to ICAM1. Together with RAP1A may participate in regulation of microtubule growth. The association of isoform 2 with activated RAP1A is required for directional movement of endothelial cells during wound healing. May be involved in regulation of Ras apoptotic function. The RASSF5-STK4 complex may mediate HRAS1 and KRAS induced apoptosis.
Tissue specificity	Widely expressed. Frequently down-regulated in lung tumor cell lines and primary lung tumors.
Sequence similarities	Contains 1 phorbol-ester/DAG-type zinc finger. Contains 1 Ras-associating domain. Contains 1 SARAH domain.
Cellular localization	Cytoplasm. Cytoplasm > cytoskeleton. Isoform 2 is mainly located in the perinuclear region of unstimulated primary T cells. Upon stimulation translocates to the leading edge and colocalizes with ITGAL/LFA-1 in the peripheral zone of the immunological synapse. Isoform 2 is localized to growing microtubules in vascular endothelial cells and is dissociated from microtubules by activated RAP1A.

Images



Immunohistochemical analysis of paraformaldehyde fixed, paraffin embedded Rat spleen tissue labeling RASSF5 with ab218191 at 1/400 followed by a conjugated secondary for 20 minutes and DAB staining.

Immunohistochemistry (Formalin/PFA-fixed paraffin-embedded sections) - Anti-RASSF5 antibody (ab218191)

Please note: All products are "FOR RESEARCH USE ONLY. NOT FOR USE IN DIAGNOSTIC PROCEDURES"

Our Abpromise to you: Quality guaranteed and expert technical support

- Replacement or refund for products not performing as stated on the datasheet
- Valid for 12 months from date of delivery
- Response to your inquiry within 24 hours
- We provide support in Chinese, English, French, German, Japanese and Spanish
- Extensive multi-media technical resources to help you
- We investigate all quality concerns to ensure our products perform to the highest standards

If the product does not perform as described on this datasheet, we will offer a refund or replacement. For full details of the Abpromise, please visit <https://www.abcam.com/abpromise> or contact our technical team.

Terms and conditions

- Guarantee only valid for products bought direct from Abcam or one of our authorized distributors