

## Product datasheet

# Rat IgG2 $\alpha$ , kappa monoclonal [RTK2758] - Isotype Control ab18450

[12 References](#) [1 Image](#)

### Overview

---

<b>Product name</b>	Rat IgG2 $\alpha$ , kappa monoclonal [RTK2758] - Isotype Control
<b>Conjugation notes</b>	Please note that this antibody is unconjugated.
<b>Tested applications</b>	<b>Suitable for:</b> ICC/IF, Flow Cyt, IP, WB, IHC-P, IHC-Fr
<b>Immunogen</b>	Trinitrophenol + KLH
<b>General notes</b>	<p>ab18450 RTK2758 immunoglobulin reacts with KLH. The RTK2758 immunoglobulin was chosen as an isotype control after screening on a variety of resting, activated, live, and fixed mouse and human tissues. RTK2758 immunoglobulin is useful as an isotype-matched control in Western blotting, immunoprecipitation, immunohistochemical staining, bioassay and immunofluorescent staining (surface or intracellular) for flow cytometric analysis.</p> <p>The Life Science industry has been in the grips of a reproducibility crisis for a number of years. Abcam is leading the way in addressing this with our range of recombinant monoclonal antibodies and knockout edited cell lines for gold-standard validation. Please check that this product meets your needs before purchasing.</p> <p>If you have any questions, special requirements or concerns, please send us an inquiry and/or contact our Support team ahead of purchase. Recommended alternatives for this product can be found below, along with publications, customer reviews and Q&amp;As</p>

### Properties

---

<b>Form</b>	Liquid
<b>Storage instructions</b>	Shipped at 4°C. Store at +4°C. Do Not Freeze.
<b>Storage buffer</b>	pH: 7.20 Preservative: 0.09% Sodium azide Constituent: PBS
	0.2 $\mu$ m filter sterilized
<b>Purity</b>	Immunogen affinity purified
<b>Purification notes</b>	The immunoglobulin was purified by affinity chromatography.
<b>Isotype control notes</b>	ab18450 RTK2758 immunoglobulin reacts with KLH. The RTK2758 immunoglobulin was chosen

as an isotype control after screening on a variety of resting, activated, live, and fixed mouse and human tissues. RTK2758 immunoglobulin is useful as an isotype-matched control in Western blotting, immunoprecipitation, immunohistochemical staining, bioassay and immunofluorescent staining (surface or intracellular) for flow cytometric analysis.

<b>Clonality</b>	Monoclonal
<b>Clone number</b>	RTK2758
<b>Isotype</b>	IgG2a
<b>Light chain type</b>	kappa

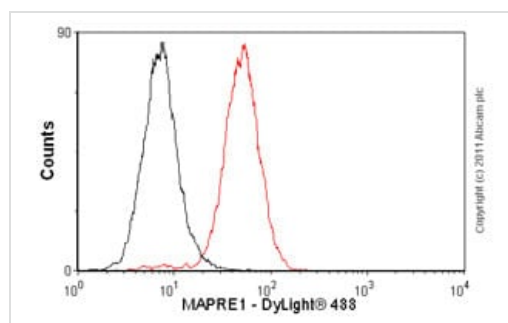
## Applications

**The Abpromise guarantee** Our **Abpromise guarantee** covers the use of ab18450 in the following tested applications.

The application notes include recommended starting dilutions; optimal dilutions/concentrations should be determined by the end user.

Application	Abreviews	Notes
ICC/IF		Use at an assay dependent concentration.
Flow Cyt		Use 2µg for 10 <sup>6</sup> cells. ab18450 is a negative isotype control.
IP		Use at an assay dependent concentration.
WB		Use at an assay dependent concentration.
IHC-P		Use at an assay dependent concentration.
IHC-Fr		Use at an assay dependent concentration.

## Images



Flow Cytometry - Rat IgG2a, kappa monoclonal [RTK2758] - Isotype Control (ab18450)

Overlay histogram showing HeLa cells stained with **ab53358** (red line). The cells were fixed with 4% paraformaldehyde (10 min) and then permeabilized with 0.1% PBS-Tween for 20 min. The cells were then incubated in 1x PBS / 10% normal goat serum / 0.3M glycine to block non-specific protein-protein interactions. The cells were then incubated with the antibody (**ab53358**, 1µg/1x10<sup>6</sup> cells) for 30 min at 22°C. The secondary antibody used was DyLight<sup>®</sup> 488 goat anti-rat IgG (H+L) (**ab98386**) at 1/500 dilution for 30 min at 22°C. Isotype control antibody (black line) was rat IgG2a, kappa monoclonal [aRTK2758] (ab18450, 2µg/1x10<sup>6</sup> cells) used under the same conditions. Acquisition of >5,000 events was performed. This antibody gave a positive signal in HeLa cells fixed with 80% methanol (5 min)/permeabilized in 0.1% PBS-Tween used under the same conditions.

**Please note:** All products are "FOR RESEARCH USE ONLY. NOT FOR USE IN DIAGNOSTIC PROCEDURES"

### **Our Abpromise to you: Quality guaranteed and expert technical support**

---

- Replacement or refund for products not performing as stated on the datasheet
- Valid for 12 months from date of delivery
- Response to your inquiry within 24 hours
  
- We provide support in Chinese, English, French, German, Japanese and Spanish
- Extensive multi-media technical resources to help you
- We investigate all quality concerns to ensure our products perform to the highest standards

If the product does not perform as described on this datasheet, we will offer a refund or replacement. For full details of the Abpromise, please visit <https://www.abcam.com/abpromise> or contact our technical team.

### **Terms and conditions**

---

- Guarantee only valid for products bought direct from Abcam or one of our authorized distributors