

## Product datasheet

# Anti-RAVER2 antibody [EPR12601] ab174321

Recombinant RabMAb

★★★★☆ [1 Abreviews](#) [2 References](#) [6 Images](#)

### Overview

<b>Product name</b>	Anti-RAVER2 antibody [EPR12601]
<b>Description</b>	Rabbit monoclonal [EPR12601] to RAVER2
<b>Host species</b>	Rabbit
<b>Tested applications</b>	<b>Suitable for:</b> ICC/IF, IP, IHC-P, WB <b>Unsuitable for:</b> Flow Cyt
<b>Species reactivity</b>	<b>Reacts with:</b> Human
<b>Immunogen</b>	Recombinant fragment corresponding to Human RAVER2. Database link: <a href="#">Q9HCJ3</a>
<b>Positive control</b>	Human fetal lung, HT1080, 293T, Human fetal brain, and Jurkat lysates; Human cervical carcinoma and tonsil tissues; 293T cells.
<b>General notes</b>	<p>This product is a recombinant monoclonal antibody, which offers several advantages including:</p> <ul style="list-style-type: none"><li>- High batch-to-batch consistency and reproducibility</li><li>- Improved sensitivity and specificity</li><li>- Long-term security of supply</li><li>- Animal-free production</li></ul> <p>For more information <a href="#">see here</a>.</p> <p>Our RabMAb<sup>®</sup> technology is a patented hybridoma-based technology for making rabbit monoclonal antibodies. For details on our patents, please refer to <a href="#">RabMAb<sup>®</sup> patents</a>.</p> <p>Mouse, Rat: We have preliminary internal testing data to indicate this antibody may not react with these species. Please contact us for more information.</p>

### Properties

<b>Form</b>	Liquid
<b>Storage instructions</b>	Shipped at 4°C. Store at +4°C short term (1-2 weeks). Upon delivery aliquot. Store at -20°C long term. Avoid freeze / thaw cycle.
<b>Storage buffer</b>	pH: 7.20 Preservative: 0.01% Sodium azide Constituents: 9% PBS, 40% Glycerol (glycerin, glycerine), 0.05% BSA, 50% Tissue culture supernatant

<b>Purity</b>	Protein A purified
<b>Clonality</b>	Monoclonal
<b>Clone number</b>	EPR12601
<b>Isotype</b>	IgG

## Applications

**The Abpromise guarantee** Our **Abpromise guarantee** covers the use of ab174321 in the following tested applications.

The application notes include recommended starting dilutions; optimal dilutions/concentrations should be determined by the end user.

Application	Abreviews	Notes
ICC/IF		1/50 - 1/100.
IP		1/10 - 1/100.
IHC-P		1/50 - 1/100. Perform heat mediated antigen retrieval before commencing with IHC staining protocol.
WB	★★★★★ (1)	1/1000 - 1/10000. Predicted molecular weight: 74 kDa.

**Application notes** Is unsuitable for Flow Cyt.

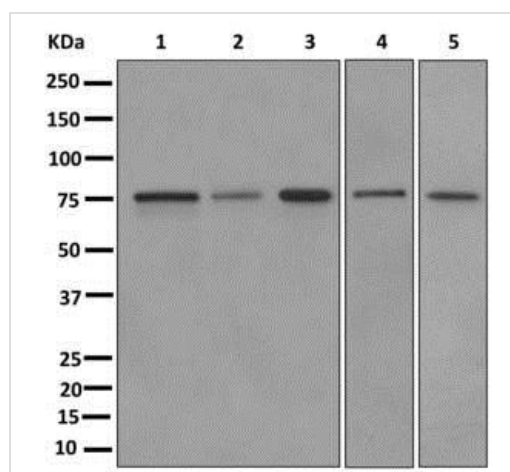
## Target

**Function** May bind single-stranded nucleic acids.

**Sequence similarities** Contains 3 RRM (RNA recognition motif) domains.

**Cellular localization** Nucleus. Cytoplasm. May shuttle between the nucleus and the cytoplasm.

## Images



Western blot - Anti-RAVER2 antibody [EPR12601] (ab174321)

**All lanes** : Anti-RAVER2 antibody [EPR12601] (ab174321) at 1/1000 dilution

**Lane 1** : Human fetal lung tissue lysate

**Lane 2** : HT1080 cell lysate

**Lane 3** : 293T cell lysate

**Lane 4** : Human fetal brain tissue lysate

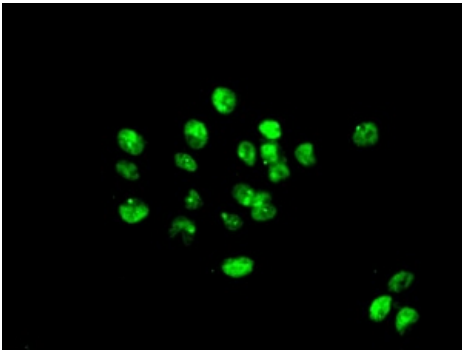
**Lane 5** : Jurkat cell lysate

Lysates/proteins at 10 µg per lane.

### Secondary

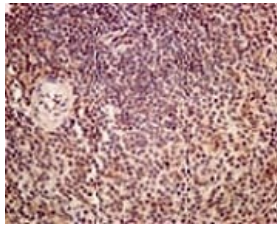
**All lanes** : Goat anti-Rabbit HRP at 1/2000 dilution

**Predicted band size:** 74 kDa



Immunocytochemistry/ Immunofluorescence - Anti-RAVER2 antibody [EPR12601] (ab174321)

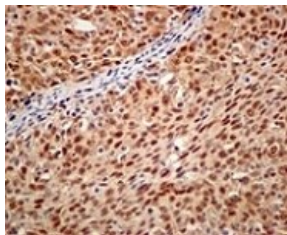
Immunofluorescent analysis of 293T cells labeling RAVER2 with ab174321 at 1/50 dilution.



Immunohistochemistry (Formalin/PFA-fixed paraffin-embedded sections) - Anti-RAVER2 antibody [EPR12601] (ab174321)

Immunohistochemical analysis of paraffin-embedded Human tonsil tissue labeling RAVER2 with ab174321 at 1/50 dilution.

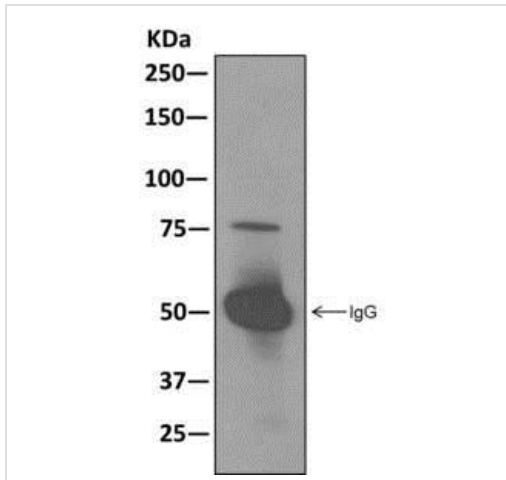
Perform heat mediated antigen retrieval before commencing with IHC staining protocol.



Immunohistochemistry (Formalin/PFA-fixed paraffin-embedded sections) - Anti-RAVER2 antibody [EPR12601] (ab174321)

Immunohistochemical analysis of paraffin-embedded Human cervical carcinoma tissue labeling RAVER2 with ab174321 at 1/50 dilution.





Perform heat mediated antigen retrieval before commencing with IHC staining protocol.



Western blot analysis on immunoprecipitation pellet from fetal lung lysate, immunoprecipitated using ab174321 at 1/10 dilution.

Immunoprecipitation - Anti-RAVER2 antibody  
[EPR12601] (ab174321)

Why choose a recombinant antibody?

 <p><b>Research with confidence</b> Consistent and reproducible results</p>	 <p><b>Long-term and scalable supply</b> Recombinant technology</p>
 <p><b>Success from the first experiment</b> Confirmed specificity</p>	 <p><b>Ethical standards compliant</b> Animal-free production</p>

Anti-RAVER2 antibody [EPR12601] (ab174321)

**Please note:** All products are "FOR RESEARCH USE ONLY. NOT FOR USE IN DIAGNOSTIC PROCEDURES"

**Our Abpromise to you: Quality guaranteed and expert technical support**

- Replacement or refund for products not performing as stated on the datasheet
- Valid for 12 months from date of delivery
- Response to your inquiry within 24 hours

- We provide support in Chinese, English, French, German, Japanese and Spanish
- Extensive multi-media technical resources to help you
- We investigate all quality concerns to ensure our products perform to the highest standards

If the product does not perform as described on this datasheet, we will offer a refund or replacement. For full details of the Abpromise, please visit <https://www.abcam.com/abpromise> or contact our technical team.

### **Terms and conditions**

---

- Guarantee only valid for products bought direct from Abcam or one of our authorized distributors