


Product datasheet

Anti-RB associated KRAB repressor antibody ab72609

[1 References](#) [1 Image](#)

Overview

Product name	Anti-RB associated KRAB repressor antibody
Description	Rabbit polyclonal to RB associated KRAB repressor
Host species	Rabbit
Tested applications	Suitable for: WB
Species reactivity	Reacts with: Human Predicted to work with: Mouse 
Immunogen	A synthesized peptide derived from N-terminal of human RB associated KRAB repressor.
Positive control	Extracts from HepG2 cells.
General notes	<p>The Life Science industry has been in the grips of a reproducibility crisis for a number of years. Abcam is leading the way in addressing this with our range of recombinant monoclonal antibodies and knockout edited cell lines for gold-standard validation. Please check that this product meets your needs before purchasing.</p> <p>If you have any questions, special requirements or concerns, please send us an inquiry and/or contact our Support team ahead of purchase. Recommended alternatives for this product can be found below, along with publications, customer reviews and Q&As</p>

Properties

Form	Liquid
Storage instructions	Shipped at 4°C. Upon delivery aliquot and store at -20°C. Avoid freeze / thaw cycles.
Storage buffer	pH: 7.40 Preservative: 0.02% Sodium azide Constituents: 50% Glycerol (glycerin, glycerine), 0.87% Sodium chloride, PBS
Purity	Immunogen affinity purified
Purification notes	The antibody was affinity-purified from rabbit antiserum by affinity-chromatography using epitope-specific immunogen.
Clonality	Polyclonal
Isotype	IgG

Applications

Applications

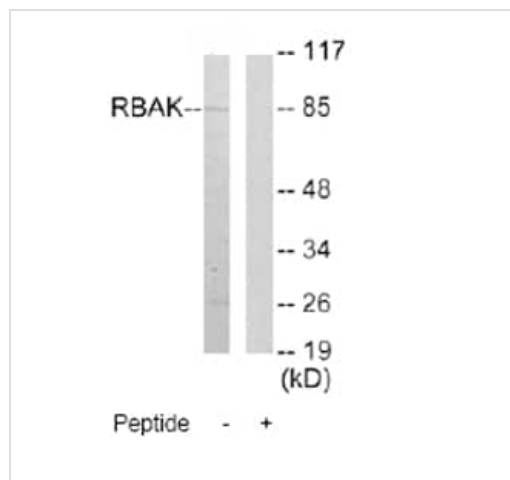
The Abpromise guarantee Our **Abpromise guarantee** covers the use of ab72609 in the following tested applications. The application notes include recommended starting dilutions; optimal dilutions/concentrations should be determined by the end user.

Application	Abreviews	Notes
WB		1/500 - 1/1000. Detects a band of approximately 85 kDa (predicted molecular weight: 83 kDa).

Target

Function	May repress E2F-dependent transcription. May promote AR-dependent transcription.
Tissue specificity	Expressed in bone, brain, heart, kidney, liver, lung, pancreas and placenta.
Sequence similarities	Belongs to the krueppel C2H2-type zinc-finger protein family. Contains 16 C2H2-type zinc fingers. Contains 1 KRAB domain.
Cellular localization	Nucleus.

Images



Western blot - Anti-RB associated KRAB repressor antibody (ab72609)

All lanes : Anti-RB associated KRAB repressor antibody (ab72609) at 1/500 dilution

Lane 1 : Extracts from HepG2 cells

Lane 2 : Extracts from HepG2 cells plus 5µg immunizing peptide

Lysates/proteins at 5 µg per lane.

Predicted band size: 83 kDa

Observed band size: 85 kDa

Please note: All products are "FOR RESEARCH USE ONLY. NOT FOR USE IN DIAGNOSTIC PROCEDURES"

Our Abpromise to you: Quality guaranteed and expert technical support

- Replacement or refund for products not performing as stated on the datasheet
- Valid for 12 months from date of delivery
- Response to your inquiry within 24 hours

- We provide support in Chinese, English, French, German, Japanese and Spanish
- Extensive multi-media technical resources to help you
- We investigate all quality concerns to ensure our products perform to the highest standards

If the product does not perform as described on this datasheet, we will offer a refund or replacement. For full details of the Abpromise, please visit <https://www.abcam.com/abpromise> or contact our technical team.

Terms and conditions

- Guarantee only valid for products bought direct from Abcam or one of our authorized distributors