




Product datasheet

Anti-RBP1 antibody ab233296

3 Images

Overview

Product name	Anti-RBP1 antibody
Description	Rabbit polyclonal to RBP1
Host species	Rabbit
Tested applications	Suitable for: IHC-P, WB
Species reactivity	Reacts with: Rat, Human, Pig Predicted to work with: Mouse, Cow 
Immunogen	Recombinant full length protein (His-tag) corresponding to Human RBP1 aa 1 to the C-terminus. Expressed in E. coli. N-terminal tags. Database link: P09455-1  Run BLAST with  Run BLAST with
Positive control	IHC-P: Human kidney tissue. WB: Recombinant human RBP1 protein. Pig liver tissue lysate. HEK-293T cell lysate. Rat testis tissue lysate.
General notes	<p>The Life Science industry has been in the grips of a reproducibility crisis for a number of years. Abcam is leading the way in addressing this with our range of recombinant monoclonal antibodies and knockout edited cell lines for gold-standard validation. Please check that this product meets your needs before purchasing.</p> <p>If you have any questions, special requirements or concerns, please send us an inquiry and/or contact our Support team ahead of purchase. Recommended alternatives for this product can be found below, along with publications, customer reviews and Q&As</p>

Properties

Form	Liquid
Storage instructions	Shipped at 4°C. Store at +4°C short term (1-2 weeks). Upon delivery aliquot. Store at -20°C long term. Avoid freeze / thaw cycle.
Storage buffer	pH: 7.40 Preservative: 0.011% Proclin 300 Constituents: 55.77% Glycerol (glycerin, glycerine), 44.219% PBS
Purity	Protein A purified
Purification notes	Antigen-specific affinity chromatography followed by Protein A affinity chromatography.
Clonality	Polyclonal

Isotype

IgG

Applications

The Abpromise guarantee

Our **Abpromise guarantee** covers the use of ab233296 in the following tested applications.

The application notes include recommended starting dilutions; optimal dilutions/concentrations should be determined by the end user.

Application	Abreviews	Notes
IHC-P		Use a concentration of 5 - 20 µg/ml.
WB		Use a concentration of 0.5 - 2 µg/ml.

Target

Function

Intracellular transport of retinol.

Tissue specificity

Detected in nearly all the tissues with higher expression in adult ovary, pancreas, pituitary gland and adrenal gland, and fetal liver.

Sequence similarities

Belongs to the calycin superfamily. Fatty-acid binding protein (FABP) family.

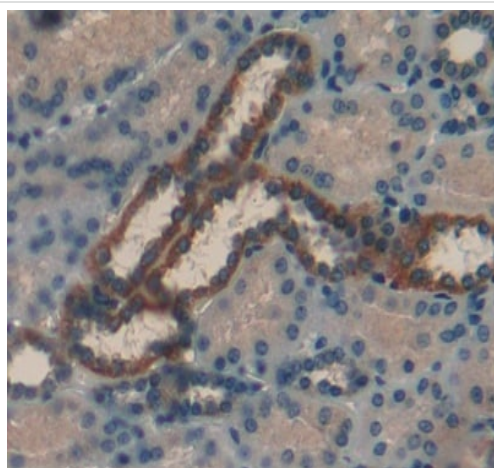
Domain

Forms a beta-barrel structure that accommodates hydrophobic ligands in its interior.

Cellular localization

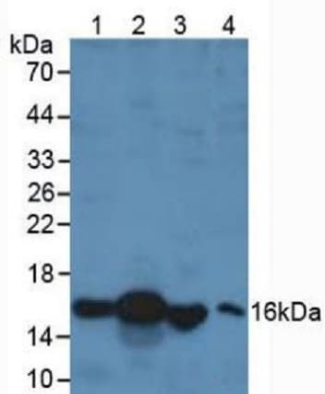
Cytoplasm.

Images



Formalin-fixed, paraffin-embedded human kidney tissue stained for RBP1 with ab233296 at 10 µg/ml in immunohistochemical analysis. DAB staining.

Immunohistochemistry (Formalin/PFA-fixed paraffin-embedded sections) - Anti-RBP1 antibody (ab233296)



Western blot - Anti-RBP1 antibody (ab233296)

All lanes : Anti-RBP1 antibody (ab233296) at 2 µg/ml

Lane 1 : Pig liver tissue lysate

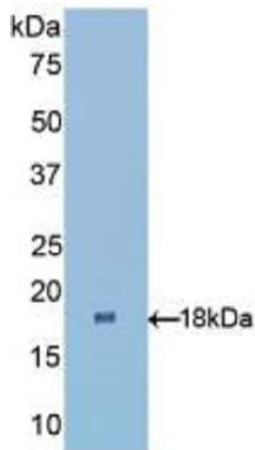
Lane 2 : Human liver tissue lysate

Lane 3 : Rat testis tissue lysate

Lane 4 : HEK-293T (Human epithelial cell line from embryonic kidney transformed with large T antigen) cell lysate

Secondary

All lanes : HRP-linked Guinea pig anti-Rabbit at 1/2000 dilution



Western blot - Anti-RBP1 antibody (ab233296)

Anti-RBP1 antibody (ab233296) at 2 µg/ml + Recombinant human RBP1 protein

Please note: All products are "FOR RESEARCH USE ONLY. NOT FOR USE IN DIAGNOSTIC PROCEDURES"

Our Abpromise to you: Quality guaranteed and expert technical support

- Replacement or refund for products not performing as stated on the datasheet
- Valid for 12 months from date of delivery
- Response to your inquiry within 24 hours
- We provide support in Chinese, English, French, German, Japanese and Spanish
- Extensive multi-media technical resources to help you
- We investigate all quality concerns to ensure our products perform to the highest standards

If the product does not perform as described on this datasheet, we will offer a refund or replacement. For full details of the Abpromise, please visit <https://www.abcam.com/abpromise> or contact our technical team.

Terms and conditions

- Guarantee only valid for products bought direct from Abcam or one of our authorized distributors