

Product datasheet

Anti-RBPJK antibody [EPR13479] ab180588

Recombinant RabMAb

★★★★☆ **3 Abreviews** **15 References** [8 Images](#)

Overview

Product name	Anti-RBPJK antibody [EPR13479]
Description	Rabbit monoclonal [EPR13479] to RBPJK
Host species	Rabbit
Tested applications	Suitable for: Flow Cyt (Intra), WB, ICC/IF Unsuitable for: IHC-P or IP
Species reactivity	Reacts with: Mouse, Rat, Human
Immunogen	Synthetic peptide. This information is proprietary to Abcam and/or its suppliers.
Positive control	WB: 293 cells, MCF7, Raji, F9, C9, and HeLa cell line lysates; ICC/IF: 293T cells; Flow Cyt (intra): HEK-293;
General notes	<p>This product is a recombinant monoclonal antibody, which offers several advantages including:</p> <ul style="list-style-type: none">- High batch-to-batch consistency and reproducibility- Improved sensitivity and specificity- Long-term security of supply- Animal-free production <p>For more information see here.</p> <p>Our RabMAb[®] technology is a patented hybridoma-based technology for making rabbit monoclonal antibodies. For details on our patents, please refer to RabMAb[®] patents.</p>

Properties

Form	Liquid
Storage instructions	Shipped at 4°C. Store at +4°C short term (1-2 weeks). Upon delivery aliquot. Store at -20°C long term. Avoid freeze / thaw cycle.
Storage buffer	Preservative: 0.01% Sodium azide Constituents: PBS, 40% Glycerol (glycerin, glycerine), 0.05% BSA
Purity	Protein A purified
Clonality	Monoclonal
Clone number	EPR13479
Isotype	IgG

Applications

The Abpromise guarantee Our **Abpromise guarantee** covers the use of ab180588 in the following tested applications. The application notes include recommended starting dilutions; optimal dilutions/concentrations should be determined by the end user.

Application	Abreviews	Notes
Flow Cyt (Intra)		1/100.
WB	★★★★★ (2)	1/1000 - 1/10000. Detects a band of approximately 60 kDa (predicted molecular weight: 56 kDa).
ICC/IF	★★★★★ (1)	1/100.

Application notes Is unsuitable for IHC-P or IP.

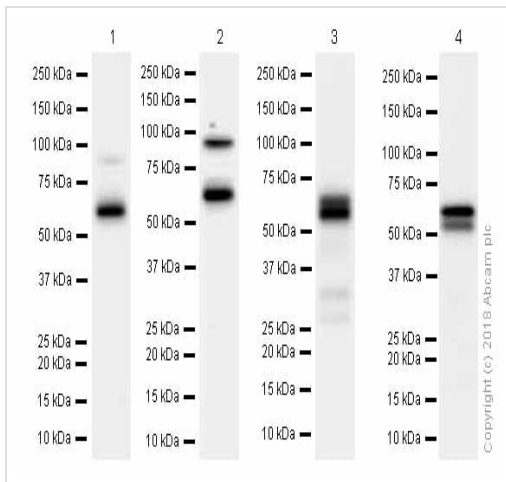
Target

Function Transcriptional regulator that plays a central role in Notch signaling, a signaling pathway involved in cell-cell communication that regulates a broad spectrum of cell-fate determinations. Acts as a transcriptional repressor when it is not associated with Notch proteins. When associated with some NICD product of Notch proteins (Notch intracellular domain), it acts as a transcriptional activator that activates transcription of Notch target genes. Probably represses or activates transcription via the recruitment of chromatin remodeling complexes containing histone deacetylase or histone acetylase proteins, respectively. Specifically binds to the immunoglobulin kappa-type J segment recombination signal sequence.

Sequence similarities Belongs to the Su(H) family.
Contains 1 IPT/TIG domain.

Cellular localization Nucleus. Cytoplasm. Mainly nuclear, upon interaction with RITA/C12orf52, translocates to the cytoplasm, down-regulating the Notch signaling pathway.

Images



Western blot - Anti-RBPJK antibody [EPR13479] (ab180588)

All lanes : Anti-RBPJK antibody [EPR13479] (ab180588) at 1/1000 dilution (Purified)

Lane 1 : Raji (Human Burkitt's lymphoma B lymphocyte) whole cell lysates at 15 µg

Lane 2 : MCF7 (Human breast adenocarcinoma epithelial cell) whole cell lysates at 15 µg

Lane 3 : F9 (Mouse embryonal carcinoma epithelial cell) whole cell lysates at 15 µg

Lane 4 : C6 (Rat glial tumor glial cell) whole cell lysates at 20 µg

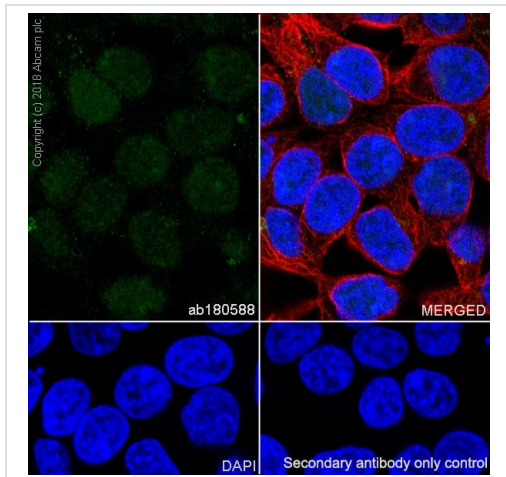
Secondary

All lanes : Goat Anti-Rabbit IgG H&L (HRP) ([ab97051](#)) at 1/20000 dilution

Predicted band size: 56 kDa

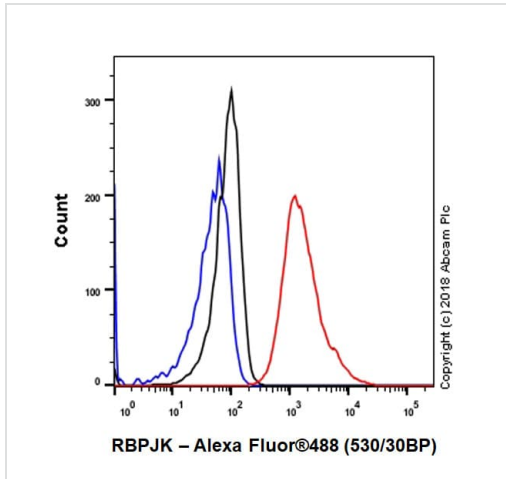
Observed band size: 56-60 kDa

The double bands are consistent with what has been described in the literature PMID: 9102301 and 24603501



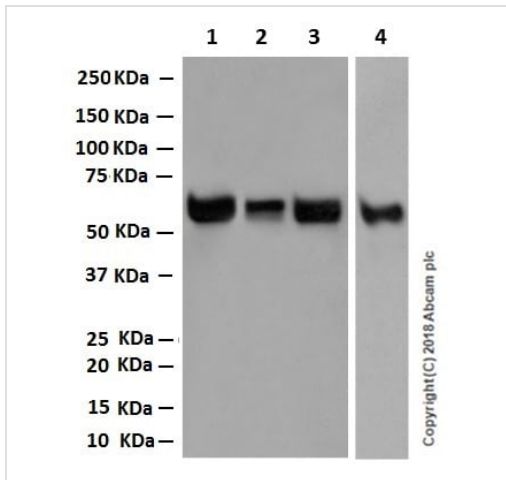
Immunocytochemistry/ Immunofluorescence - Anti-RBPJK antibody [EPR13479] (ab180588)

Immunocytochemistry/ Immunofluorescence analysis of 293T (Human embryonic kidney epithelial cell) cells labeling RBPJK with Purified ab180588 at 1:100 dilution (10 µg/ml). Cells were fixed in 4% Paraformaldehyde and permeabilized with 0.1% tritonX-100. Cells were counterstained with Ab195889 Anti-alpha Tubulin antibody [DM1A] - Microtubule Marker (Alexa Fluor® 594) 1:200 (2.5 µg/ml). Goat anti rabbit IgG (Alexa Fluor® 488, [ab150077](#)) was used as the secondary antibody at 1:1000 (2 µg/ml) dilution. DAPI nuclear counterstain. PBS instead of the primary antibody was used as the secondary antibody only control.



Flow Cytometry (Intracellular) - Anti-RBPJK antibody [EPR13479] (ab180588)

Intracellular Flow Cytometry analysis of HEK-293 (Human embryonic kidney epithelial cell) cells labeling RBPJK with Purified ab180588 at 1/100 dilution (10 µg/ml) (red). Cells were fixed with 4% Paraformaldehyde. A Goat anti rabbit IgG (Alexa Fluor® 488, **ab150077**) secondary antibody was used at 1/2000. Isotype control - Rabbit monoclonal IgG (Black). Unlabeled control - Cell without incubation with primary antibody and secondary antibody (Blue).



Western blot - Anti-RBPJK antibody [EPR13479] (ab180588)

All lanes : Anti-RBPJK antibody [EPR13479] (ab180588) at 0.4 µg/ml (Unpurified)

Lane 1 : C6 (Rat glial tumor glial cell) whole cell lysate

Lane 2 : PC-12 (Rat adrenal gland pheochromocytoma) whole cell lysate

Lane 3 : NIH/3T3 (Mouse embryonic fibroblast) whole cell lysate

Lane 4 : Raw264.7 (Mouse abelson murine leukemia virus-induced tumor macrophage) whole cell lysate

Lysates/proteins at 20 µg per lane.

Secondary

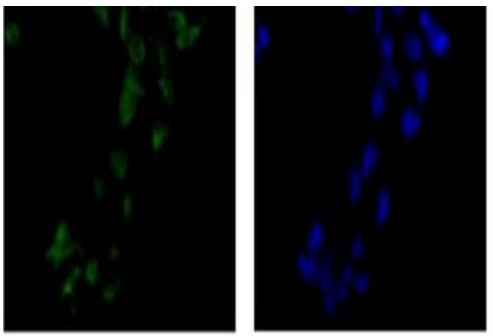
All lanes : Goat Anti-Rabbit IgG H&L (HRP) (**ab97051**) at 1/50000 dilution

Predicted band size: 56 kDa

Blocking and diluting buffer: 5% NFDm/TBST.

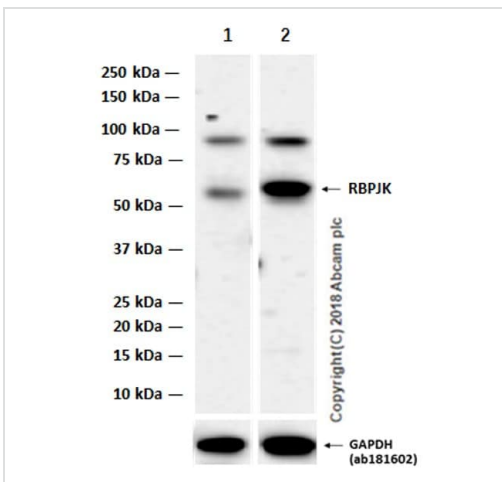
Exposure time: Lane 1-3: 3 minutes

Lane 4: 45 seconds



Immunocytochemistry/ Immunofluorescence - Anti-RBPJK antibody [EPR13479] (ab180588)

Immunofluorescent analysis of 4% paraformaldehyde fixed 293 cells labeling RBPJK with unpurified ab180588 at 1/100 (green). Dapi shown in blue.



Western blot - Anti-RBPJK antibody [EPR13479] (ab180588)

All lanes : Anti-RBPJK antibody [EPR13479] (ab180588) at 1/1000 dilution (Unpurified)

Lane 1 : MCF-7 (Human breast adenocarcinoma epithelial cell) whole cell lysate 20ug prepared using RIPA lysis method

Lane 2 : MCF-7 (Human breast adenocarcinoma epithelial cell) whole cell lysate 20ug prepared using 1% SDS hot lysis method

Lysates/proteins at 20 µg per lane.

Secondary

All lanes : Goat Anti-Rabbit IgG, (H+L), Peroxidase conjugated at 1/20000 dilution

Predicted band size: 56 kDa

Observed band size: 60 kDa

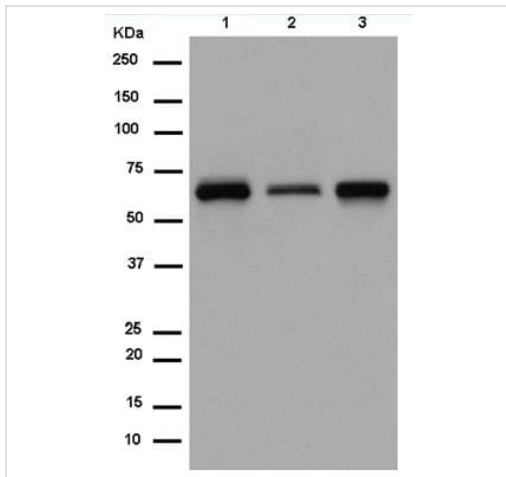
Exposure time: 3 minutes

Blocking/Diluting buffer and concentration 5% NFDm/TBST.

Extra band at: 90kDa

We are unsure as to the identity of this extra band.

For Lysate preparation protocol, please refer to the protocol book in the protocol section and/or [here \(downloadable copy\)](#).



Western blot - Anti-RBPJK antibody [EPR13479]
(ab180588)

All lanes : Anti-RBPJK antibody [EPR13479] (ab180588) at
1/2000 dilution (Unpurified)

Lane 1 : 293 cell line lysate

Lane 2 : MCF7 cell line lysate

Lane 3 : HeLa cell line lysate





Secondary

All lanes : Goat Anti-Rabbit IgG, (H+L), Peroxidase conjugated at
1/1000 dilution

Predicted band size: 56 kDa

Observed band size: 60 kDa

Why choose a
recombinant antibody?

 Research with confidence Consistent and reproducible results	 Long-term and scalable supply Recombinant technology
 Success from the first experiment Confirmed specificity	 Ethical standards compliant Animal-free production

Anti-RBPJK antibody [EPR13479] (ab180588)

Please note: All products are "FOR RESEARCH USE ONLY. NOT FOR USE IN DIAGNOSTIC PROCEDURES"

Our Abpromise to you: Quality guaranteed and expert technical support

- Replacement or refund for products not performing as stated on the datasheet
- Valid for 12 months from date of delivery
- Response to your inquiry within 24 hours
- We provide support in Chinese, English, French, German, Japanese and Spanish
- Extensive multi-media technical resources to help you
- We investigate all quality concerns to ensure our products perform to the highest standards

If the product does not perform as described on this datasheet, we will offer a refund or replacement. For full details of the Abpromise,

please visit <https://www.abcam.com/abpromise> or contact our technical team.

Terms and conditions

- Guarantee only valid for products bought direct from Abcam or one of our authorized distributors