


Product datasheet

Anti-RBPMS antibody ab152101

★★★★★ [1 Abreviews](#) [11 References](#) [5 Images](#)

Overview

Product name	Anti-RBPMS antibody
Description	Rabbit polyclonal to RBPMS
Host species	Rabbit
Tested applications	Suitable for: WB, IHC-P, ICC/IF
Species reactivity	Reacts with: Mouse, Human Predicted to work with: Cow 
Immunogen	Recombinant fragment, corresponding to a region within amino acids 28-202 of Human RBPMS (Q93062; NP_001008712).
Positive control	Wild-type HeLa, A549 and Mouse heart whole cell lysates. IHC-P: Human lung adenocarcinoma tissue. ICC: A549 cells.
General notes	<p>The Life Science industry has been in the grips of a reproducibility crisis for a number of years. Abcam is leading the way in addressing this with our range of recombinant monoclonal antibodies and knockout edited cell lines for gold-standard validation. Please check that this product meets your needs before purchasing.</p> <p>If you have any questions, special requirements or concerns, please send us an inquiry and/or contact our Support team ahead of purchase. Recommended alternatives for this product can be found below, along with publications, customer reviews and Q&As</p>

Properties

Form	Liquid
Storage instructions	Shipped at 4°C. Upon delivery aliquot. Store at -20°C or -80°C. Avoid freeze / thaw cycle.
Storage buffer	pH: 7.00 Preservative: 0.025% Proclin 300 Constituents: 79% PBS, 20% Glycerol (glycerin, glycerine)
Purity	Immunogen affinity purified
Clonality	Polyclonal
Isotype	IgG

Applications

The Abpromise guarantee

Our **Abpromise guarantee** covers the use of ab152101 in the following tested applications.

The application notes include recommended starting dilutions; optimal dilutions/concentrations should be determined by the end user.

Application	Abreviews	Notes
WB		1/500 - 1/3000. Predicted molecular weight: 24 kDa.
IHC-P	★★★★★ (1)	1/100 - 1/1000. Perform heat mediated antigen retrieval with citrate buffer pH 6 before commencing with IHC staining protocol.
ICC/IF		1/100 - 1/1000.

Target

Function

Acts as a coactivator of transcriptional activity. Required to increase TGF β 1/Smad-mediated transactivation. Acts through SMAD2, SMAD3 and SMAD4 to increase transcriptional activity. Increases phosphorylation of SMAD2 and SMAD3 on their C-terminal SSXS motif, possibly through recruitment of TGFBR1. Promotes the nuclear accumulation of SMAD2, SMAD3 and SMAD4 proteins. Binds to poly(A) RNA.

Tissue specificity

Ubiquitously expressed, at various levels depending on the isoform and the tissue.

Sequence similarities

Contains 1 RRM (RNA recognition motif) domain.

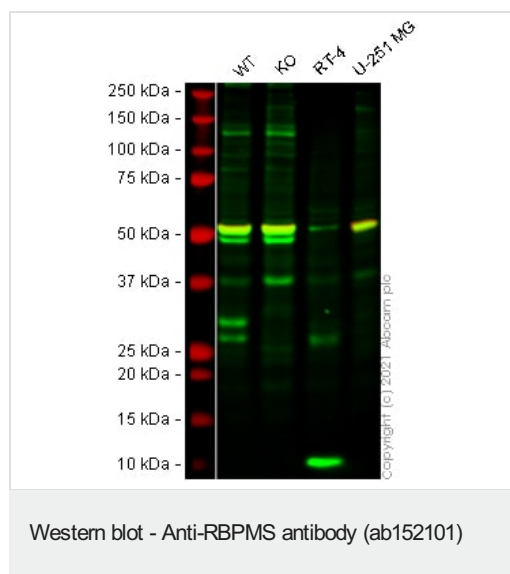
Domain

The RRM domain is necessary for interaction with SMAD4. Both the RRM domain and the C-terminus are required for TGF β 1/Smad-mediated transactivation activity.

Cellular localization

Nucleus. Cytoplasm.

Images



All lanes : Anti-RBPMS antibody (ab152101) at 1/500 dilution

Lane 1 : Wild-type HeLa cell lysate

Lane 2 : RBPMS Knockout HeLa cell lysate

Lane 3 : RT-4 cell lysate

Lane 4 : U-251 MG cell lysate

Lysates/proteins at 20 μ g per lane.

Performed under reducing conditions.

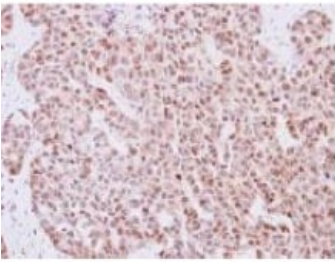
Predicted band size: 24 kDa

Observed band size: 30 kDa

Lanes 1 - 4: Merged signal (red and green). Green - ab152101

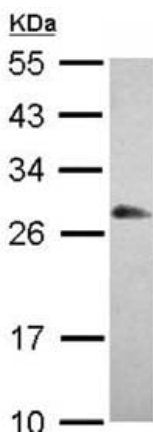
observed at 30 kDa. Red - loading control, **ab7291** (Mouse anti-Alpha Tubulin [DM1A]) observed at 55 kDa.

ab152101 was shown to react with RBPMS in wild-type HeLa cells in western blot. The bands observed in RBPMS knockout cell line **ab264697** (RBPMS knockout cell lysate **ab258631**) below 30 kDa may represent truncated forms and cleaved fragments. This has not been investigated further and the functional properties of the gene product have not been determined. HeLa wild-type and RBPMS knockout cell lysates were subjected to SDS-PAGE. Membranes were blocked in 3 % milk in TBS-T (0.1 % Tween®) before incubation with ab152101 and **ab7291** (Mouse anti-Alpha Tubulin [DM1A]) overnight at 4°C at a 1 in 500 dilution and a 1 in 20000 dilution respectively. Blots were incubated with Goat anti-Rabbit IgG H&L (IRDye® 800CW) preabsorbed (**ab216773**) and Goat anti-Mouse IgG H&L (IRDye® 680RD) preabsorbed (**ab216776**) secondary antibodies at 1 in 20000 dilution for 1 h at room temperature before imaging.



Immunohistochemistry (Formalin/PFA-fixed paraffin-embedded sections) - Anti-RBPMS antibody (ab152101)

Immunohistochemical analysis of paraffin-embedded Human lung adenocarcinoma tissue labeling RBPMS with ab152101 at 1/250 dilution.

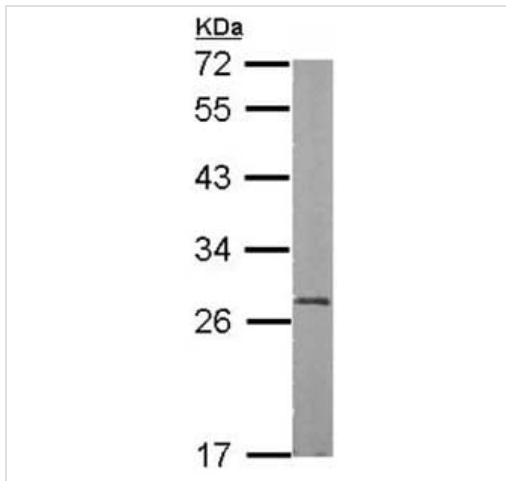


Western blot - Anti-RBPMS antibody (ab152101)

Anti-RBPMS antibody (ab152101) at 1/1000 dilution + A549 whole cell lysate at 30 µg

Predicted band size: 24 kDa

12% SDS PAGE

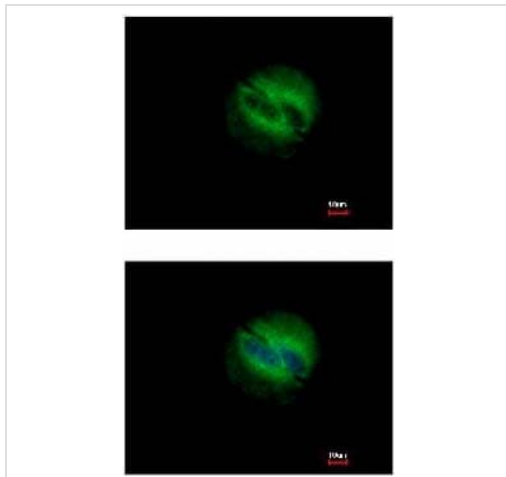


Western blot - Anti-RBPMS antibody (ab152101)

Anti-RBPMS antibody (ab152101) at 1/1000 dilution + Mouse heart whole cell lysate at 50 μ g

Predicted band size: 24 kDa

12% SDS PAGE



Immunocytochemistry/ Immunofluorescence - Anti-RBPMS antibody (ab152101)

Immunofluorescent analysis of methanol-fixed A549 cells labeling RBPMS with ab152101 at 1/500 dilution. Lower image shows cells co-stained with Hoechst 33342.

Please note: All products are "FOR RESEARCH USE ONLY. NOT FOR USE IN DIAGNOSTIC PROCEDURES"

Our Abpromise to you: Quality guaranteed and expert technical support

- Replacement or refund for products not performing as stated on the datasheet
- Valid for 12 months from date of delivery
- Response to your inquiry within 24 hours
- We provide support in Chinese, English, French, German, Japanese and Spanish
- Extensive multi-media technical resources to help you
- We investigate all quality concerns to ensure our products perform to the highest standards

If the product does not perform as described on this datasheet, we will offer a refund or replacement. For full details of the Abpromise, please visit <https://www.abcam.com/abpromise> or contact our technical team.

Terms and conditions

- Guarantee only valid for products bought direct from Abcam or one of our authorized distributors