


## Product datasheet

### Anti-RCC2 antibody ab154705

3 Images

#### Overview

<b>Product name</b>	Anti-RCC2 antibody
<b>Description</b>	Rabbit polyclonal to RCC2
<b>Host species</b>	Rabbit
<b>Tested applications</b>	<b>Suitable for:</b> WB, IHC-P
<b>Species reactivity</b>	<b>Reacts with:</b> Mouse, Human <b>Predicted to work with:</b> Cow, Xenopus laevis, Zebrafish 
<b>Immunogen</b>	Recombinant fragment corresponding to a region within amino acids 250 and 522 of Human RCC2 (Uniprot ID: Q9P258)
<b>Positive control</b>	293T, A431, H1299, HeLaS3, HepG2, MOLT4, Raji or mouse brain whole cell lysate; SW480 xenograft.
<b>General notes</b>	<p>The Life Science industry has been in the grips of a reproducibility crisis for a number of years. Abcam is leading the way in addressing this with our range of recombinant monoclonal antibodies and knockout edited cell lines for gold-standard validation. Please check that this product meets your needs before purchasing.</p> <p>If you have any questions, special requirements or concerns, please send us an inquiry and/or contact our Support team ahead of purchase. Recommended alternatives for this product can be found below, along with publications, customer reviews and Q&amp;As</p>

#### Properties

<b>Form</b>	Liquid
<b>Storage instructions</b>	Shipped at 4°C. Upon delivery aliquot. Store at -20°C or -80°C. Avoid freeze / thaw cycle.
<b>Storage buffer</b>	pH: 7.00 Preservative: 0.01% Thimerosal (merthiolate) Constituents: 1.21% Tris, 0.75% Glycine, 10% Glycerol (glycerin, glycerine)
<b>Purity</b>	Immunogen affinity purified
<b>Clonality</b>	Polyclonal
<b>Isotype</b>	IgG

#### Applications

## The Abpromise guarantee

Our **Abpromise guarantee** covers the use of ab154705 in the following tested applications.

The application notes include recommended starting dilutions; optimal dilutions/concentrations should be determined by the end user.

Application	Abreviews	Notes
WB		1/500 - 1/3000. Predicted molecular weight: 56 kDa.
IHC-P		1/100 - 1/1000. Perform heat mediated antigen retrieval with citrate buffer pH 6 before commencing with IHC staining protocol. Alternatively Tris-EDTA buffer (pH8.0) may be used.

## Target

### Function

Required for completion of mitosis and cytokinesis. May function as a guanine nucleotide exchange factor for the small GTPase RAC1.

### Sequence similarities

Contains 7 RCC1 repeats.

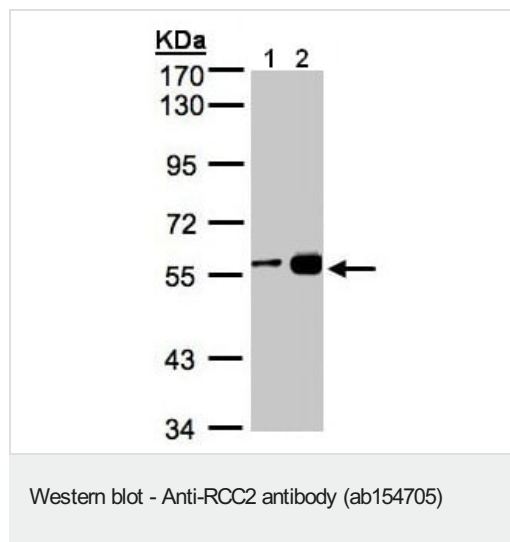
### Post-translational modifications

Phosphorylated upon DNA damage, probably by ATM or ATR.

### Cellular localization

Nucleus > nucleolus. Chromosome > centromere. Cytoplasm > cytoskeleton > spindle. Appears in the nucleus at G2, then concentrates at the inner centromere region of chromosomes during prophase. Redistributes to the midzone of the mitotic spindle during anaphase. Here, the protein covers the entire equatorial diameter from cortex to cortex.

## Images



**All lanes :** Anti-RCC2 antibody (ab154705) at 1/1000 dilution

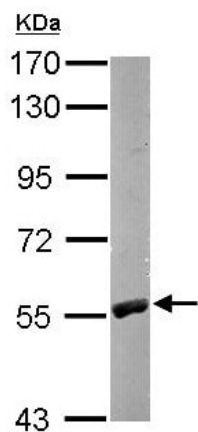
**Lane 1 :** H1299 whole cell lysate

**Lane 2 :** MOLT4 whole cell lysate

Lysates/proteins at 30 µg per lane.

**Predicted band size:** 56 kDa

7.5% SDS PAGE

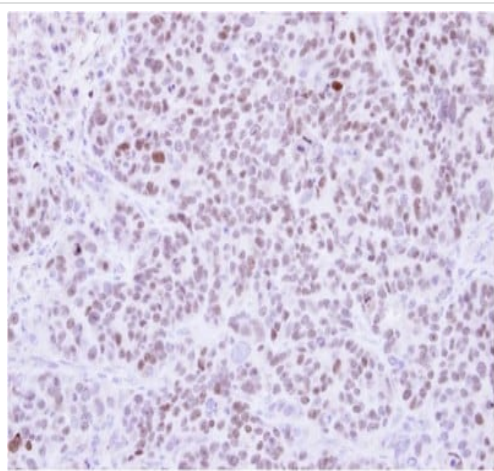


Western blot - Anti-RCC2 antibody (ab154705)

Anti-RCC2 antibody (ab154705) at 1/1000 dilution + Mouse brain whole cell lysate at 50 µg

**Predicted band size:** 56 kDa

7.5% SDS PAGE



Immunohistochemistry (Formalin/PFA-fixed paraffin-embedded sections) - Anti-RCC2 antibody (ab154705)

Immunohistochemical analysis of paraffin-embedded SW480 xenograft, labeling RCC2 using ab154705 at 1/500 dilution.

**Please note:** All products are "FOR RESEARCH USE ONLY. NOT FOR USE IN DIAGNOSTIC PROCEDURES"

### Our Abpromise to you: Quality guaranteed and expert technical support

- Replacement or refund for products not performing as stated on the datasheet
- Valid for 12 months from date of delivery
- Response to your inquiry within 24 hours
- We provide support in Chinese, English, French, German, Japanese and Spanish

- Extensive multi-media technical resources to help you
- We investigate all quality concerns to ensure our products perform to the highest standards

If the product does not perform as described on this datasheet, we will offer a refund or replacement. For full details of the Abpromise, please visit <https://www.abcam.com/abpromise> or contact our technical team.

#### **Terms and conditions**

---

- Guarantee only valid for products bought direct from Abcam or one of our authorized distributors