

Product datasheet

Anti-RECQ1 antibody ab151501

[4 References](#) [4 Images](#)

Overview

| | |
|----------------------------|---|
| Product name | Anti-RECQ1 antibody |
| Description | Rabbit polyclonal to RECQ1 |
| Host species | Rabbit |
| Tested applications | Suitable for: WB, IHC-P, IP |
| Species reactivity | Reacts with: Mouse, Human |
| Immunogen | Recombinant fragment, corresponding to a region within amino acids 400-649 of Human RECQ1 (Uniprot: P46063). |
| Positive control | WB: HEK-293T and NIH 3T3 whole cell lysates; IHC-P: HumanU87 xenograft tissue; IF: HeLa cells; IP: HeLa cells. |
| General notes | <p>The Life Science industry has been in the grips of a reproducibility crisis for a number of years. Abcam is leading the way in addressing this with our range of recombinant monoclonal antibodies and knockout edited cell lines for gold-standard validation. Please check that this product meets your needs before purchasing.</p> <p>If you have any questions, special requirements or concerns, please send us an inquiry and/or contact our Support team ahead of purchase. Recommended alternatives for this product can be found below, along with publications, customer reviews and Q&As</p> |

Properties

| | |
|-----------------------------|---|
| Form | Liquid |
| Storage instructions | Shipped at 4°C. Store at +4°C short term (1-2 weeks). Upon delivery aliquot. Store at -20°C or -80°C. Avoid freeze / thaw cycle. |
| Storage buffer | pH: 7.00 Preservative: 0.01% Thimerosal (merthiolate) Constituents: 1.21% Tris, 0.75% Glycine, 10% Glycerol (glycerin, glycerine) |
| Purity | Immunogen affinity purified |
| Clonality | Polyclonal |
| Isotype | IgG |

Applications

The Abpromise guarantee

Our **Abpromise guarantee** covers the use of ab151501 in the following tested applications.

The application notes include recommended starting dilutions; optimal dilutions/concentrations should be determined by the end user.

| Application | Abreviews | Notes |
|-------------|-----------|--|
| WB | | 1/500 - 1/3000. Predicted molecular weight: 72 kDa. |
| IHC-P | | 1/100 - 1/1000. Perform heat mediated antigen retrieval with citrate buffer pH 6 before commencing with IHC staining protocol. Or perform heat mediated retrieval with Tris-EDTA buffer pH 8 |
| IP | | 1/100 - 1/500. |

Target

Function

DNA helicase that may play a role in the repair of DNA that is damaged by ultraviolet light or other mutagens. Exhibits a magnesium-dependent ATP-dependent DNA-helicase activity that unwinds single- and double-stranded DNA in a 3'-5' direction.

Tissue specificity

High expression in heart, lung, skeletal muscle and kidney, low expression in brain.

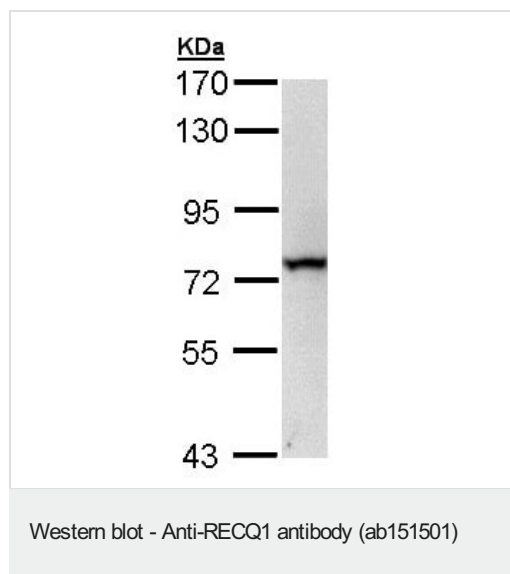
Sequence similarities

Belongs to the helicase family. RecQ subfamily.
Contains 1 helicase ATP-binding domain.
Contains 1 helicase C-terminal domain.

Cellular localization

Nucleus.

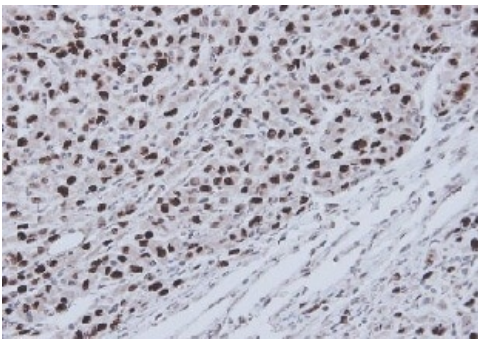
Images



Anti-RECQ1 antibody (ab151501) at 1/1000 dilution + HEK-293T (human epithelial cell line from embryonic kidney transformed with large T antigen) whole cell lysate at 30 µg

Predicted band size: 72 kDa

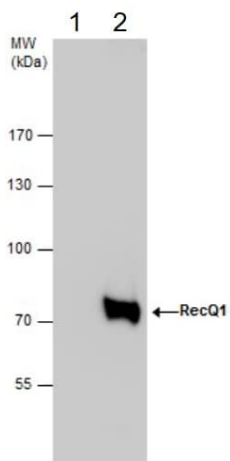
7.5% SDS PAGE



Immunohistochemistry (Formalin/PFA-fixed paraffin-embedded sections) - Anti-RECQ1 antibody (ab151501)

Immunohistochemical analysis of paraffin-embedded human U87 xenograft tissue staining RECQ1 with ab151501 at 1/100 dilution.

Antigen Retrieval: EDTA based buffer, pH 8.0, 15min.



Immunoprecipitation - Anti-RECQ1 antibody (ab151501)

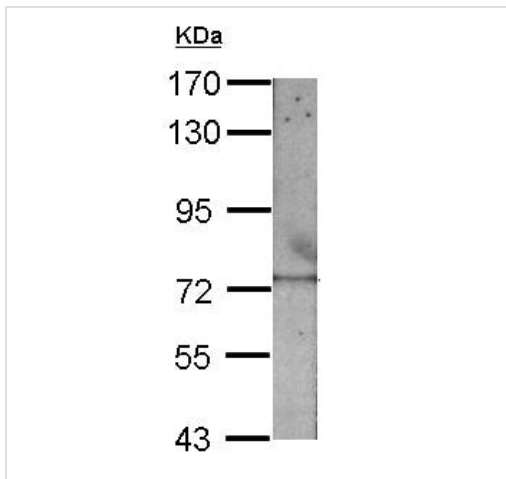
Immunoprecipitation of RecQ1 protein from HeLa (human epithelial cell line from cervix adenocarcinoma) whole cell extract using 5 μ g of ab151501.

IP Antibody sample:

1- Control IgG;

2- ab151501.

Western blot analysis was performed using ab151501, followed by anti-Rabbit IgG antibody.



Western blot - Anti-RECQ1 antibody (ab151501)

Anti-RECQ1 antibody (ab151501) at 1/1000 dilution + NIH/3T3
(mouse embryo fibroblast cell line) whole cell lysate at 30 µg

Predicted band size: 72 kDa

7.5% SDS PAGE

Please note: All products are "FOR RESEARCH USE ONLY. NOT FOR USE IN DIAGNOSTIC PROCEDURES"

Our Abpromise to you: Quality guaranteed and expert technical support

- Replacement or refund for products not performing as stated on the datasheet
- Valid for 12 months from date of delivery
- Response to your inquiry within 24 hours
- We provide support in Chinese, English, French, German, Japanese and Spanish
- Extensive multi-media technical resources to help you
- We investigate all quality concerns to ensure our products perform to the highest standards

If the product does not perform as described on this datasheet, we will offer a refund or replacement. For full details of the Abpromise, please visit <https://www.abcam.com/abpromise> or contact our technical team.

Terms and conditions

- Guarantee only valid for products bought direct from Abcam or one of our authorized distributors