


Product datasheet

redFluor™ 710 Anti-CD3 antibody [UCHT1] ab241935

[1 Image](#)

Overview

Product name	redFluor™ 710 Anti-CD3 antibody [UCHT1]
Description	redFluor™ 710 Mouse monoclonal [UCHT1] to CD3
Host species	Mouse
Conjugation	redFluor™ 710
Specificity	ab241935 is specific for human CD3e. It reacts with both surface-expressed and intracellular CD3e protein.
Tested applications	Suitable for: Flow Cyt
Species reactivity	Reacts with: Human Predicted to work with: Chimpanzee 
Immunogen	The details of the immunogen for this antibody are not available.
Positive control	Flow Cyt: Human peripheral blood lymphocytes.
General notes	<p>The Life Science industry has been in the grips of a reproducibility crisis for a number of years. Abcam is leading the way in addressing this with our range of recombinant monoclonal antibodies and knockout edited cell lines for gold-standard validation. Please check that this product meets your needs before purchasing.</p> <p>If you have any questions, special requirements or concerns, please send us an inquiry and/or contact our Support team ahead of purchase. Recommended alternatives for this product can be found below, along with publications, customer reviews and Q&As</p>

Properties

Form	Liquid
Storage instructions	Shipped at 4°C. Store at +4°C. Store In the Dark.
Storage buffer	pH: 7.20 Preservative: 0.09% Sodium azide Constituents: 0.12% Monobasic dihydrogen sodium phosphate, 0.87% Sodium chloride, 0.1% Gelatin
Purity	Affinity purified
Purification notes	ab241935 was purified from tissue culture supernatant via affinity chromatography. The purified antibody was conjugated under optimal conditions, with unreacted dye removed from the

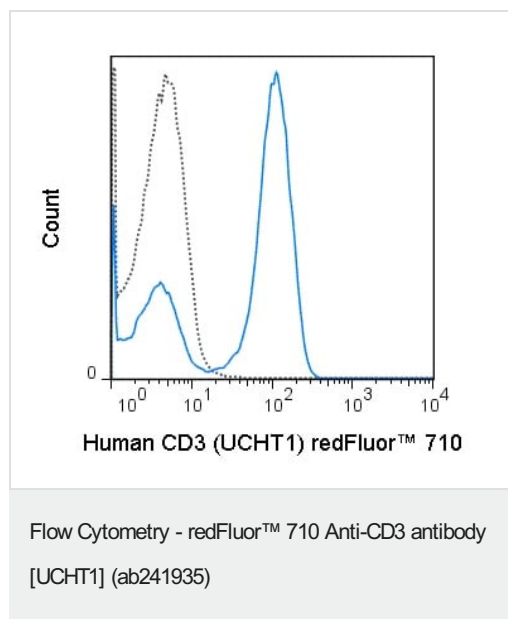
	preparation.
Clonality	Monoclonal
Clone number	UCHT1
Isotype	IgG1
Light chain type	kappa

Applications

The Abpromise guarantee Our **Abpromise guarantee** covers the use of ab241935 in the following tested applications. The application notes include recommended starting dilutions; optimal dilutions/concentrations should be determined by the end user.

Application	Abreviews	Notes
Flow Cyt		Use 5µl for 10 ⁵⁻⁸ cells. Use 5 µl (0.5 µg) per test. The antibody has been diluted for use at 5 µl per test, defined as the amount of antibody that will stain a cell sample in a final volume of approximately 100 µl. The number of cells within a sample should be determined empirically, but typically ranges between 1x10 ⁵ to 1x10 ⁸ cells.

Images



Flow cytometric analysis of human peripheral blood lymphocytes stained for CD3 with 5 µL (0.5 µg) ab241935 (solid line) or 0.5 µg redFluor™ 710 Mouse IgG1 isotype control (dashed line).

Please note: All products are "FOR RESEARCH USE ONLY. NOT FOR USE IN DIAGNOSTIC PROCEDURES"

Our Abpromise to you: Quality guaranteed and expert technical support

- Replacement or refund for products not performing as stated on the datasheet
- Valid for 12 months from date of delivery
- Response to your inquiry within 24 hours

- We provide support in Chinese, English, French, German, Japanese and Spanish
- Extensive multi-media technical resources to help you
- We investigate all quality concerns to ensure our products perform to the highest standards

If the product does not perform as described on this datasheet, we will offer a refund or replacement. For full details of the Abpromise, please visit <https://www.abcam.com/abpromise> or contact our technical team.

Terms and conditions

- Guarantee only valid for products bought direct from Abcam or one of our authorized distributors