

Product datasheet

Anti-Reelin antibody [G10] α b78540

★★★★★ [4 Abreviews](#) [30 References](#) [4 Images](#)

Overview

Product name	Anti-Reelin antibody [G10]
Description	Mouse monoclonal [G10] to Reelin
Host species	Mouse
Tested applications	Suitable for: WB, IHC (PFA fixed)
Species reactivity	Reacts with: Mouse, Rat, Human
Immunogen	Fusion protein corresponding to Mouse Reelin aa 150-500. Database link: Q60841
Positive control	Mouse liver or kidney. Rat brain lysate and Mouse brain membrane lysate. Mouse embryonic cerebral cortex.
General notes	<p>This product was changed from ascites to tissue culture supernatant on 17 May 2019. Please note that the dilutions may need to be adjusted accordingly. If you have any questions, please do not hesitate to contact our scientific support team.</p> <p>The Life Science industry has been in the grips of a reproducibility crisis for a number of years. Abcam is leading the way in addressing this with our range of recombinant monoclonal antibodies and knockout edited cell lines for gold-standard validation. Please check that this product meets your needs before purchasing.</p> <p>If you have any questions, special requirements or concerns, please send us an inquiry and/or contact our Support team ahead of purchase. Recommended alternatives for this product can be found below, along with publications, customer reviews and Q&As</p>

Properties

Form	Liquid
Storage instructions	Shipped at 4°C. Store at +4°C short term (1-2 weeks). Store at -20°C or -80°C. Avoid freeze / thaw cycle.
Storage buffer	Preservative: 0.1% Sodium azide Constituents: 1.45% Sodium chloride, 0.242% Tris
Purity	Tissue culture supernatant
Purification notes	Purified from TCS.
Clonality	Monoclonal

Clone number	G10
Isotype	IgG1
Light chain type	kappa

Applications

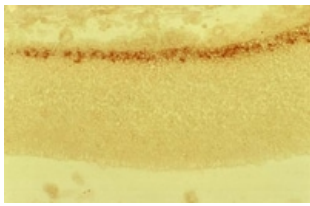
The Abpromise guarantee Our **Abpromise guarantee** covers the use of ab78540 in the following tested applications. The application notes include recommended starting dilutions; optimal dilutions/concentrations should be determined by the end user.

Application	Abreviews	Notes
WB		Use at an assay dependent concentration. Predicted molecular weight: 388 kDa.
IHC (PFA fixed)		Use at an assay dependent concentration.

Target

Function	Extracellular matrix serine protease that plays a role in layering of neurons in the cerebral cortex and cerebellum. Regulates microtubule function in neurons and neuronal migration. Affects migration of sympathetic preganglionic neurons in the spinal cord, where it seems to act as a barrier to neuronal migration. Enzymatic activity is important for the modulation of cell adhesion. Binding to the extracellular domains of lipoprotein receptors VLDLR and LRP8/APOER2 induces tyrosine phosphorylation of DAB1 and modulation of TAU phosphorylation.
Tissue specificity	Abundantly produced during brain ontogenesis by the Cajal-Retzius cells and other pioneer neurons located in the telencephalic marginal zone and by granule cells of the external granular layer of the cerebellum. In adult brain, preferentially expressed in GABAergic interneurons of prefrontal cortices, temporal cortex, hippocampus and glutamatergic granule cells of cerebellum. Expression is reduced to about 50% in patients with schizophrenia. Also expressed in fetal and adult liver.
Involvement in disease	Lissencephaly 2
Sequence similarities	Belongs to the reelin family. Contains 16 BNR repeats. Contains 8 EGF-like domains. Contains 1 reelin domain.
Developmental stage	Expressed in fetal and postnatal brain and liver. Expression in postnatal human brain is high in the cerebellum.
Domain	The basic C-terminal region is essential for secretion.
Cellular localization	Secreted > extracellular space > extracellular matrix.

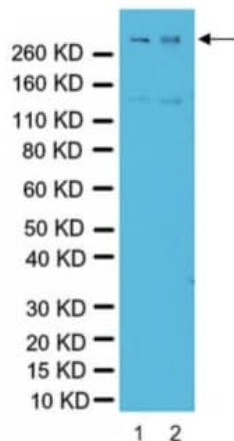
Images



Immunohistochemistry (PFA fixed) - Anti-Reelin antibody [G10] (ab78540)

ab78540, at 1/1000 dilution staining Reelin in embryonic cerebral cortex at 15 days in utero, with the pial surface above and the ventricle below. The positive zone is the Cajal-Retzius cell layer in the marginal zone.

This image was generated using the ascites version of the product.



Western blot - Anti-Reelin antibody [G10] (ab78540)

All lanes : Anti-Reelin antibody [G10] (ab78540) at 1/500 dilution

Lane 1 : Rat brain lysate

Lane 2 : Mouse brain membrane lysate

Secondary

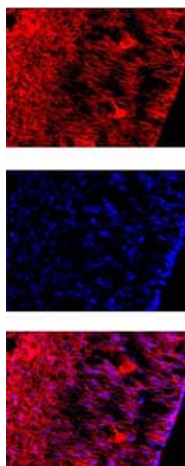
All lanes : Goat anti-mouse secondary antibody conjugated to HRP

Predicted band size: 388 kDa

Observed band size: 388 kDa

Additional bands at: 140 kDa. We are unsure as to the identity of these extra bands.

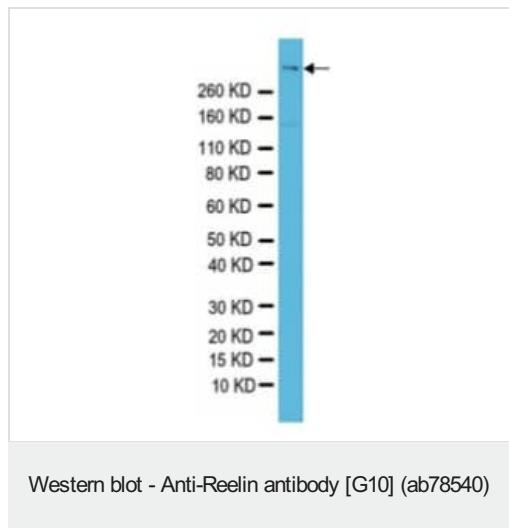
This image was generated using the ascites version of the product.



Immunohistochemistry (PFA fixed) - Anti-Reelin antibody [G10] (ab78540)

Immunolocalization of Reelin (red) in the cortex of e14.5 mouse CNS using ab78540 at 1/1000 dilution. The blue stain is Hoechst nuclear counter stain.

This image was generated using the ascites version of the product.



Anti-Reelin antibody [G10] (ab78540) at 1/500 dilution + Rat brain lysate at 10 μ g

Secondary

Goat anti-mouse secondary antibody conjugated to HRP

Predicted band size: 388 kDa

Observed band size: 388 kDa

This image was generated using the ascites version of the product.

Please note: All products are "FOR RESEARCH USE ONLY. NOT FOR USE IN DIAGNOSTIC PROCEDURES"

Our Abpromise to you: Quality guaranteed and expert technical support

- Replacement or refund for products not performing as stated on the datasheet
- Valid for 12 months from date of delivery
- Response to your inquiry within 24 hours
- We provide support in Chinese, English, French, German, Japanese and Spanish
- Extensive multi-media technical resources to help you
- We investigate all quality concerns to ensure our products perform to the highest standards

If the product does not perform as described on this datasheet, we will offer a refund or replacement. For full details of the Abpromise, please visit <https://www.abcam.com/abpromise> or contact our technical team.

Terms and conditions

- Guarantee only valid for products bought direct from Abcam or one of our authorized distributors