



### Anti-REG1 alpha antibody ab231092

3 Images

#### Overview

<b>Product name</b>	Anti-REG1 alpha antibody
<b>Description</b>	Rabbit polyclonal to REG1 alpha
<b>Host species</b>	Rabbit
<b>Tested applications</b>	<b>Suitable for:</b> WB, IHC-P
<b>Species reactivity</b>	<b>Reacts with:</b> Mouse, Rat
<b>Immunogen</b>	Recombinant full length protein (His-T7-tag) corresponding to Rat REG1 alpha aa 1 to the C-terminus. Full length mature chain, expressed in E.coli. N-terminal tags. Database link: <a href="#">P10758</a>
	 <a href="#">Run BLAST with</a>  <a href="#">Run BLAST with</a>
<b>Positive control</b>	IHC-P: Rat intestine tissue. WB: Rat and mouse pancreas lysates; Recombinant rat REG1 alpha protein.
<b>General notes</b>	<p>The Life Science industry has been in the grips of a reproducibility crisis for a number of years. Abcam is leading the way in addressing this with our range of recombinant monoclonal antibodies and knockout edited cell lines for gold-standard validation. Please check that this product meets your needs before purchasing.</p> <p>If you have any questions, special requirements or concerns, please send us an inquiry and/or contact our Support team ahead of purchase. Recommended alternatives for this product can be found below, along with publications, customer reviews and Q&amp;As</p>

#### Properties

<b>Form</b>	Liquid
<b>Storage instructions</b>	Shipped at 4°C. Store at +4°C short term (1-2 weeks). Upon delivery aliquot. Store at -20°C long term. Avoid freeze / thaw cycle.
<b>Storage buffer</b>	pH: 7.40 Preservative: 0.011% Proclin 300 Constituents: 55.77% Glycerol (glycerin, glycerine), 44.219% PBS
<b>Purity</b>	Immunogen affinity purified
<b>Purification notes</b>	ab231092 was purified by antigen-specific affinity chromatography followed by Protein A affinity chromatography.
<b>Clonality</b>	Polyclonal

Isotype

IgG

## Applications

### The Abpromise guarantee

Our **Abpromise guarantee** covers the use of ab231092 in the following tested applications.

The application notes include recommended starting dilutions; optimal dilutions/concentrations should be determined by the end user.

Application	Abreviews	Notes
WB		Use a concentration of 0.2 - 2 µg/ml. Predicted molecular weight: 19 kDa.
IHC-P		Use a concentration of 5 - 20 µg/ml.

## Target

### Function

Might act as an inhibitor of spontaneous calcium carbonate precipitation. May be associated with neuronal sprouting in brain, and with brain and pancreas regeneration.

### Tissue specificity

In pancreatic acinar cells and, in lower levels, in brain. Enhanced expression of PSP-related transcripts and intraneuronal accumulation of PSP-like proteins is found in brain from Alzheimer disease and Down syndrome patients.

### Sequence similarities

Contains 1 C-type lectin domain.

### Developmental stage

High expression levels in fetal and infant brains; much lower in adult brains.

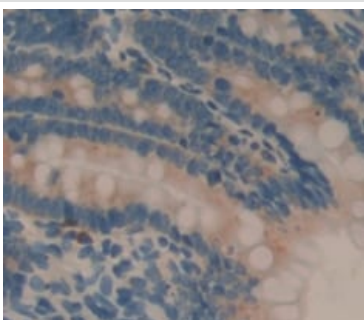
### Post-translational modifications

The composition of the O-linked carbohydrate on Thr-27 is complex and varied. In the crystallographic structure, the attached sugar appears to be N-acetylglucosamine, typical of an intracellular protein, rather than N-acetylgalactosamine.

### Cellular localization

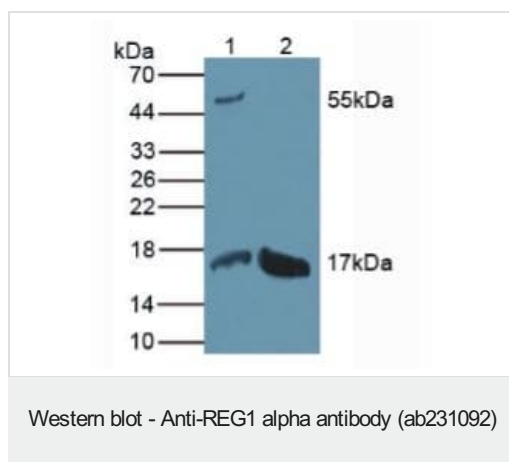
Secreted.

## Images



Formalin-fixed, paraffin-embedded rat intestine tissue stained for REG1 alpha using ab231092 at 20 µg/ml in immunohistochemical analysis, followed by DAB staining.

Immunohistochemistry (Formalin/PFA-fixed paraffin-embedded sections) - Anti-REG1 alpha antibody (ab231092)



**All lanes :** Anti-REG1 alpha antibody (ab231092) at 2 µg/ml

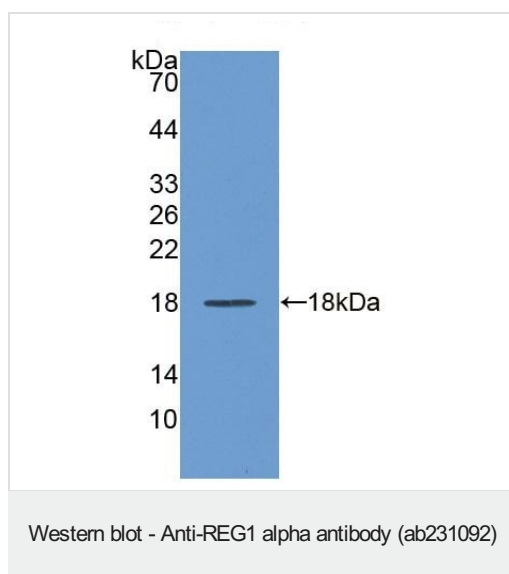
**Lane 1 :** Rat pancreas lysate

**Lane 2 :** Mouse pancreas lysate

#### Secondary

**All lanes :** HRP-Linked Guinea pig Anti-Rabbit antibody at 1/1000 dilution

**Predicted band size:** 19 kDa



Anti-REG1 alpha antibody (ab231092) at 2 µg/ml + Recombinant rat REG1 alpha protein

**Predicted band size:** 19 kDa

**Please note:** All products are "FOR RESEARCH USE ONLY. NOT FOR USE IN DIAGNOSTIC PROCEDURES"

#### Our Abpromise to you: Quality guaranteed and expert technical support

- Replacement or refund for products not performing as stated on the datasheet
- Valid for 12 months from date of delivery
- Response to your inquiry within 24 hours
- We provide support in Chinese, English, French, German, Japanese and Spanish
- Extensive multi-media technical resources to help you
- We investigate all quality concerns to ensure our products perform to the highest standards

If the product does not perform as described on this datasheet, we will offer a refund or replacement. For full details of the Abpromise, please visit <https://www.abcam.com/abpromise> or contact our technical team.

#### Terms and conditions

- Guarantee only valid for products bought direct from Abcam or one of our authorized distributors

