

Anti-REG1 alpha antibody ab47099

[4 References](#) [1 Image](#)

Overview

Product name	Anti-REG1 alpha antibody
Description	Rabbit polyclonal to REG1 alpha
Host species	Rabbit
Specificity	This antibody is specific for REG 1 alpha. It was tested in a sandwich ELISA with antigens: Reg 1beta, PAP=(REG III), and Reg IV. We did not detect any crossreactivity.
Tested applications	Suitable for: WB
Species reactivity	Reacts with: Human
Immunogen	Recombinant human REG 1 alpha. A 17.8 kDa protein containing 144 amino acid residues of the human REG 1 alpha and 12 additional amino acid residues, HisTag. Source of immunogen <i>E.coli</i>
Positive control	recombinant protein
General notes	<p>The Life Science industry has been in the grips of a reproducibility crisis for a number of years. Abcam is leading the way in addressing this with our range of recombinant monoclonal antibodies and knockout edited cell lines for gold-standard validation. Please check that this product meets your needs before purchasing.</p> <p>If you have any questions, special requirements or concerns, please send us an inquiry and/or contact our Support team ahead of purchase. Recommended alternatives for this product can be found below, along with publications, customer reviews and Q&As</p>

Properties

Form	Liquid
Storage instructions	Shipped at 4°C. Store at +4°C short term (1-2 weeks). Upon delivery aliquot. Store at -20°C or -80°C. Avoid freeze / thaw cycle.
Storage buffer	Constituents: 0.134% PBS, 0.58% Sodium chloride
Purity	Immunogen affinity purified
Purification notes	Immunoaffinity chromatography on a column with immobilized recombinant human REG 1 alpha.
Clonality	Polyclonal
Isotype	IgG

Applications

Applications

The Abpromise guarantee

Our **Abpromise guarantee** covers the use of ab47099 in the following tested applications.

The application notes include recommended starting dilutions; optimal dilutions/concentrations should be determined by the end user.

Application	Abreviews	Notes
WB		Use a concentration of 1 µg/ml. Detects a band of approximately 14 kDa (predicted molecular weight: 19 kDa).

Target

Function

Might act as an inhibitor of spontaneous calcium carbonate precipitation. May be associated with neuronal sprouting in brain, and with brain and pancreas regeneration.

Tissue specificity

In pancreatic acinar cells and, in lower levels, in brain. Enhanced expression of PSP-related transcripts and intraneuronal accumulation of PSP-like proteins is found in brain from Alzheimer disease and Down syndrome patients.

Sequence similarities

Contains 1 C-type lectin domain.

Developmental stage

High expression levels in fetal and infant brains; much lower in adult brains.

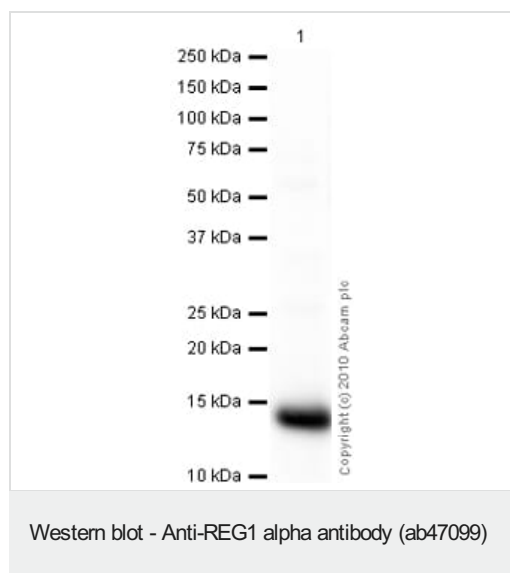
Post-translational modifications

The composition of the O-linked carbohydrate on Thr-27 is complex and varied. In the crystallographic structure, the attached sugar appears to be N-acetylglucosamine, typical of an intracellular protein, rather than N-acetylgalactosamine.

Cellular localization

Secreted.

Images



Anti-REG1 alpha antibody (ab47099) at 1 µg/ml + Human pancreas tissue lysate - total protein (**ab29816**) at 10 µg

Secondary

Goat Anti-Rabbit IgG H&L (HRP) preadsorbed (**ab97080**) at 1/5000 dilution

Developed using the ECL technique.

Performed under reducing conditions.

Predicted band size: 19 kDa

Exposure time: 30 seconds

The band observed at 14 kDa could potentially be a cleaved form of REG1 alpha due to the presence of a 25 amino acid signal peptide.

Please note: All products are "FOR RESEARCH USE ONLY. NOT FOR USE IN DIAGNOSTIC PROCEDURES"

Our Abpromise to you: Quality guaranteed and expert technical support

- Replacement or refund for products not performing as stated on the datasheet
- Valid for 12 months from date of delivery
- Response to your inquiry within 24 hours
- We provide support in Chinese, English, French, German, Japanese and Spanish
- Extensive multi-media technical resources to help you
- We investigate all quality concerns to ensure our products perform to the highest standards

If the product does not perform as described on this datasheet, we will offer a refund or replacement. For full details of the Abpromise, please visit <https://www.abcam.com/abpromise> or contact our technical team.

Terms and conditions

- Guarantee only valid for products bought direct from Abcam or one of our authorized distributors