

Product datasheet

Anti-REG3A + REG3G antibody [EPRR18188] ab202057

Recombinant RabMAb

[3 References](#) [6 Images](#)

Overview

Product name	Anti-REG3A + REG3G antibody [EPRR18188]
Description	Rabbit monoclonal [EPRR18188] to REG3A + REG3G
Host species	Rabbit
Tested applications	Suitable for: WB, IHC-P, ICC/IF
Species reactivity	Reacts with: Human, Recombinant fragment
Immunogen	Recombinant fragment. This information is proprietary to Abcam and/or its suppliers.
Positive control	WB: Human small intestine lysate; REG3A recombinant protein fragment; REG3G recombinant protein fragment. IHC-P: Human pancreas tissue. ICC/IF: BxPC-3 and HT-29 cells.
General notes	<p>This product is a recombinant monoclonal antibody, which offers several advantages including:</p> <ul style="list-style-type: none">- High batch-to-batch consistency and reproducibility- Improved sensitivity and specificity- Long-term security of supply- Animal-free production <p>For more information see here.</p> <p>Our RabMAb[®] technology is a patented hybridoma-based technology for making rabbit monoclonal antibodies. For details on our patents, please refer to RabMAb[®] patents.</p>

Properties

Form	Liquid
Storage instructions	Shipped at 4°C. Store at +4°C short term (1-2 weeks). Upon delivery aliquot. Store at -20°C long term. Avoid freeze / thaw cycle.
Storage buffer	pH: 7.2 Preservative: 0.01% Sodium azide Constituents: 59% PBS, 40% Glycerol (glycerin, glycerine), 0.05% BSA
Purity	Protein A purified
Clonality	Monoclonal
Clone number	EPRR18188
Isotype	IgG

Applications

The Abpromise guarantee

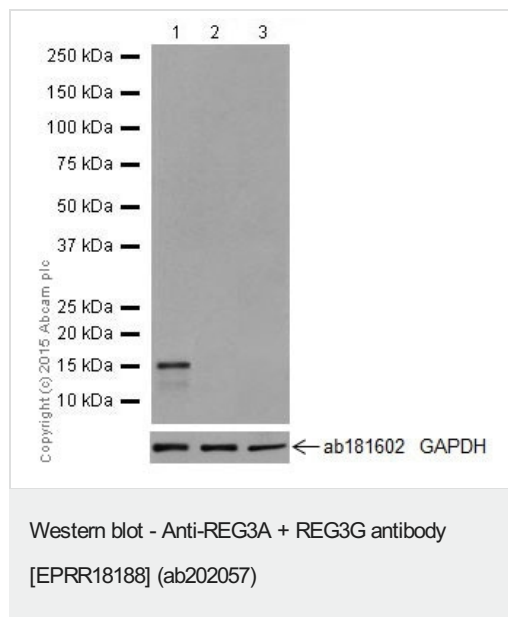
Our **Abpromise guarantee** covers the use of ab202057 in the following tested applications.

The application notes include recommended starting dilutions; optimal dilutions/concentrations should be determined by the end user.

Application	Abreviews	Notes
WB		1/1000. Detects a band of approximately 16 kDa (predicted molecular weight: 19 kDa).
IHC-P		1/600. Perform heat mediated antigen retrieval with Tris/EDTA buffer pH 9.0 before commencing with IHC staining protocol.
ICC/IF		1/1000.

Target

Images



All lanes : Anti-REG3A + REG3G antibody [EPRR18188] (ab202057) at 1/1000 dilution

Lane 1 : Human small intestine tissue lysate

Lane 2 : Human fetal liver tissue lysate

Lane 3 : Human fetal brain tissue lysate

Lysates/proteins at 10 µg per lane.

Secondary

All lanes : Goat Anti-Rabbit IgG, (H+L), Peroxidase conjugated at 1/1000 dilution

Predicted band size: 19 kDa

Observed band size: 16 kDa

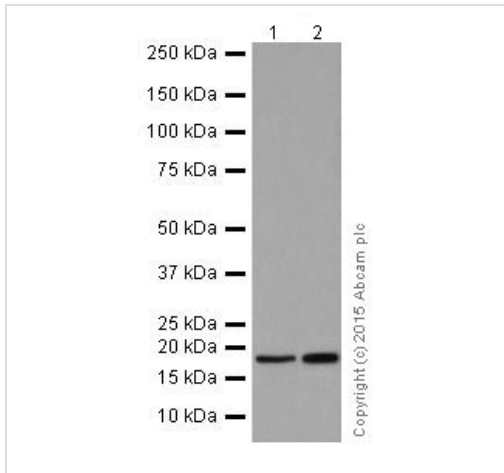
Exposure time: 3 minutes

Blocking/Dilution buffer: 5% NFDm/TBST.

The expression profile observed is consistent with what has been described in the literatures PMID: 12890698 & 22943287 for REG3A and PMID: 22252863 & 21254165 for REG3G.

Please note both Human fetal liver and brain represent negative

controls for REG3A and REG3G.



Western blot - Anti-REG3A + REG3G antibody [EPRR18188] (ab202057)

All lanes : Anti-REG3A + REG3G antibody [EPRR18188] (ab202057) at 1/10000 dilution

Lane 1 : REG3A recombinant protein fragment

Lane 2 : REG3G recombinant protein fragment

Lysates/proteins at 0.01 µg per lane.

Secondary

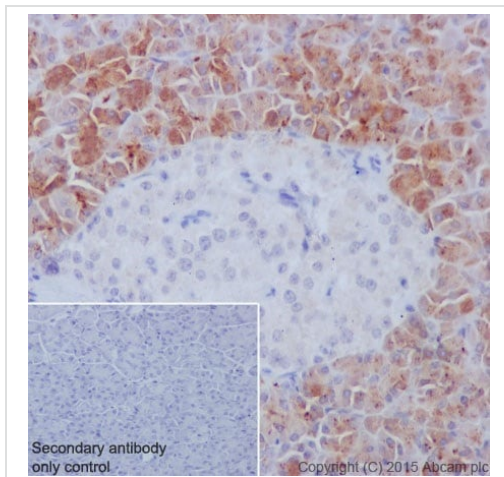
All lanes : Goat Anti-Rabbit IgG, (H+L), Peroxidase conjugated at 1/1000 dilution

Predicted band size: 19 kDa

Observed band size: 16 kDa

Exposure time: 15 seconds

Blocking/Dilution buffer: 5% NFDm/TBST.

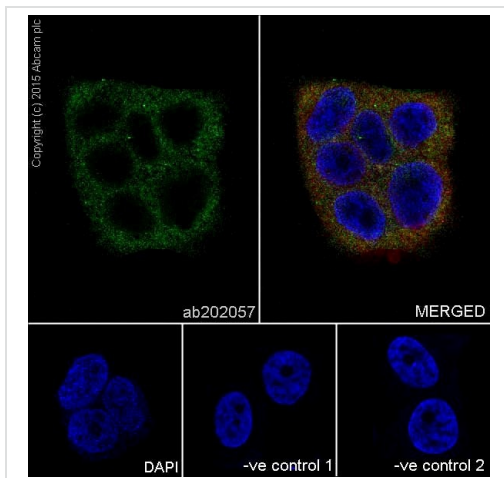


Immunohistochemistry (Formalin/PFA-fixed paraffin-embedded sections) - Anti-REG3A + REG3G antibody [EPRR18188] (ab202057)

Immunohistochemical analysis of paraffin-embedded Human pancreas tissue labeling REG3G + REG3A with ab202057 at 1/600 dilution, followed by Goat Anti-Rabbit IgG H&L (HRP) ([ab97051](#)) secondary antibody at 1/500 dilution. Cytoplasmic staining on Human pancreas tissue is observed. Counter stained with Hematoxylin.

Secondary antibody only control: Used PBS instead of primary antibody, secondary antibody is Goat Anti-Rabbit IgG H&L (HRP) ([ab97051](#)) at 1/500 dilution.

Perform heat mediated antigen retrieval with Tris/EDTA buffer pH 9.0 before commencing with IHC staining protocol.

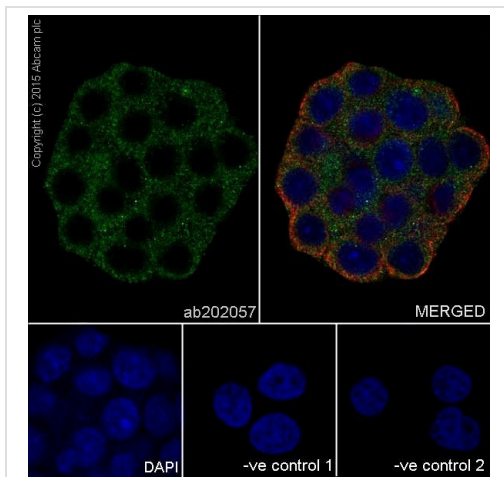


Immunocytochemistry/ Immunofluorescence - Anti-REG3A + REG3G antibody [EPRR18188] (ab202057)

Immunofluorescent analysis of 4% Paraformaldehyde-fixed, 0.1% Triton X-100 permeabilized BxPC-3 (Human pancreas adenocarcinoma cells) cells labeling REG3G + REG3A with ab202057 at 1/1000 dilution, followed by Goat anti-rabbit IgG (Alexa Fluor® 488) ([ab150077](#)) secondary antibody at 1/500 dilution (green). Confocal image showing cytoplasmic staining on BxPC-3 cell line. The nuclear counter stain is DAPI (blue). Tubulin is detected with [ab7291](#) (anti-Tubulin mouse mAb) at 1/1000 dilution and [ab150120](#) (AlexaFluor®594 Goat anti-Mouse secondary) at 1/500 dilution (red).

The negative controls are as follows:

-ve control 1: ab202057 at 1/1000 dilution followed by [ab150120](#) (AlexaFluor®594 Goat anti-Mouse secondary) at 1/500 dilution.
 -ve control 2: [ab7291](#) (anti-Tubulin mouse mAb) at 1/1000 dilution followed by [ab150077](#) (Alexa Fluor®488 Goat Anti-Rabbit IgG H&L) at 1/500 dilution.



Immunocytochemistry/ Immunofluorescence - Anti-REG3A + REG3G antibody [EPRR18188] (ab202057)

Immunofluorescent analysis of 100% Methanol-fixed, 0.1% Triton X-100 permeabilized HT-29 (Human colorectal adenocarcinoma cells) cells labeling REG3G + REG3A with ab202057 at 1/1000 dilution, followed by Goat anti-rabbit IgG (Alexa Fluor® 488) ([ab150077](#)) secondary antibody at 1/500 dilution (green). Confocal image showing cytoplasmic staining on HT-29 cell line. The nuclear counter stain is DAPI (blue). Tubulin is detected with [ab7291](#) (anti-Tubulin mouse mAb) at 1/1000 dilution and [ab150120](#) (AlexaFluor®594 Goat anti-Mouse secondary) at 1/500 dilution (red).

The negative controls are as follows:

-ve control 1: ab202057 at 1/1000 dilution followed by [ab150120](#) (AlexaFluor®594 Goat anti-Mouse secondary) at 1/500 dilution.
 -ve control 2: [ab7291](#) (anti-Tubulin mouse mAb) at 1/1000 dilution followed by [ab150077](#) (Alexa Fluor®488 Goat Anti-Rabbit IgG H&L) at 1/500 dilution.

Why choose a recombinant antibody?



Research with confidence
Consistent and reproducible results



Long-term and scalable supply
Recombinant technology



Success from the first experiment
Confirmed specificity



Ethical standards compliant
Animal-free production

Anti-REG3A + REG3G antibody [EPRR18188]
(ab202057)

Please note: All products are "FOR RESEARCH USE ONLY. NOT FOR USE IN DIAGNOSTIC PROCEDURES"

Our Abpromise to you: Quality guaranteed and expert technical support

- Replacement or refund for products not performing as stated on the datasheet
- Valid for 12 months from date of delivery
- Response to your inquiry within 24 hours
- We provide support in Chinese, English, French, German, Japanese and Spanish
- Extensive multi-media technical resources to help you
- We investigate all quality concerns to ensure our products perform to the highest standards

If the product does not perform as described on this datasheet, we will offer a refund or replacement. For full details of the Abpromise, please visit <https://www.abcam.com/abpromise> or contact our technical team.

Terms and conditions

- Guarantee only valid for products bought direct from Abcam or one of our authorized distributors