


Product datasheet

Anti-REM/GES antibody [EP4482] ab124703

Recombinant RabMAb

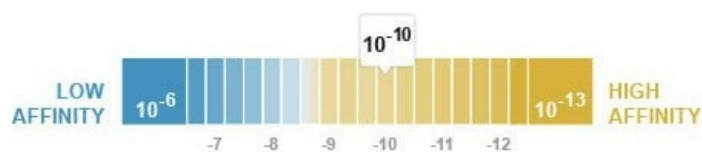
3 Images

Overview

Product name	Anti-REM/GES antibody [EP4482]
Description	Rabbit monoclonal [EP4482] to REM/GES
Host species	Rabbit
Tested applications	Suitable for: WB Unsuitable for: Flow Cyt, ICC/IF, IHC-P or IP
Species reactivity	Reacts with: Mouse, Human Predicted to work with: Rat 
Immunogen	Synthetic peptide within Human REM/GES aa 200-300. The exact sequence is proprietary.
Positive control	C2C12 and SW1353 cell lysates.
General notes	<p>This product is a recombinant monoclonal antibody, which offers several advantages including:</p> <ul style="list-style-type: none"> - High batch-to-batch consistency and reproducibility - Improved sensitivity and specificity - Long-term security of supply - Animal-free production <p>For more information see here.</p> <p>Our RabMAb[®] technology is a patented hybridoma-based technology for making rabbit monoclonal antibodies. For details on our patents, please refer to RabMAb[®] patents.</p>

Properties

Form	Liquid
Storage instructions	Shipped at 4°C. Store at -20°C. Stable for 12 months at -20°C.
Dissociation constant (K _D)	K _D = 3.83 x 10 ⁻¹⁰ M



[Learn more about K_D](#)

Storage buffer	pH: 7.20 Preservative: 0.05% Sodium azide
----------------	--

	Constituents: 40% Glycerol (glycerin, glycerine), 9.85% Tris glycine, 50% Tissue culture supernatant
Purity	Protein A purified
Clonality	Monoclonal
Clone number	EP4482
Isotype	IgG

Applications

The Abpromise guarantee Our **Abpromise guarantee** covers the use of ab124703 in the following tested applications. The application notes include recommended starting dilutions; optimal dilutions/concentrations should be determined by the end user.

Application	Abreviews	Notes
WB		1/1000 - 1/10000. Detects a band of approximately 39 kDa (predicted molecular weight: 33 kDa).

Application notes Is unsuitable for Flow Cyt, ICC/IF, IHC-P or IP.

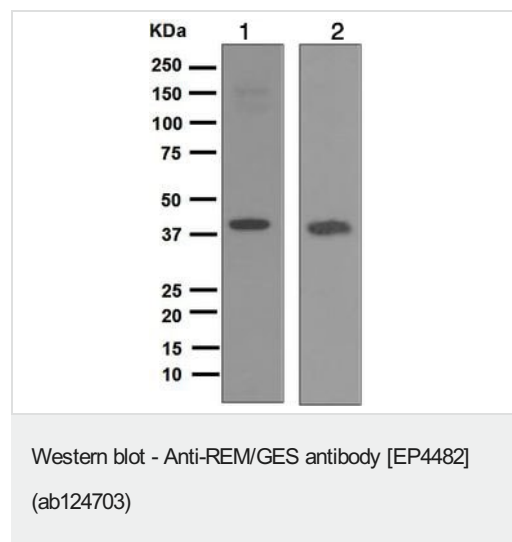
Target

Function Promotes endothelial cell sprouting and actin cytoskeletal reorganization. May be involved in angiogenesis. May function in Ca(2+) signaling.

Tissue specificity Most highly expressed in the endothelial lining of the blood vessels in uterus and heart. Lower levels found in spleen, lymph node, kidney and testis. Also found in cells with secretory function such as the islets of Langerhans, lobule/duct epithelium in the breast, bile duct epithelium in the liver, surface epithelium in the endometrial glands of the uterus, colon mucosa and acinar cells in the pancreas and the prostate.

Sequence similarities Belongs to the small GTPase superfamily. RGK family.

Images



All lanes : Anti-REM/GES antibody [EP4482] (ab124703) at 1/1000 dilution

Lane 1 : C2C12 cell lysates

Lane 2 : SW1353 cell lysates

Lysates/proteins at 10 µg per lane.

Secondary

All lanes : Goat anti-Rabbit HRP at 1/2000 dilution

Predicted band size: 33 kDa

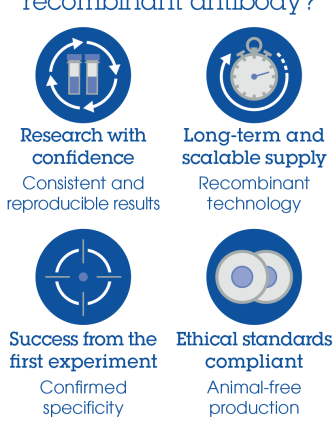
OI-RD Scanning - Anti-REM/GES antibody [EP4482]
(ab124703)

Equilibrium disassociation constant (K_D)

Learn more about K_D

[Click here to learn more about \$K_D\$](#)

Why choose a recombinant antibody?



- Research with confidence**
Consistent and reproducible results
- Long-term and scalable supply**
Recombinant technology
- Success from the first experiment**
Confirmed specificity
- Ethical standards compliant**
Animal-free production

Anti-REM/GES antibody [EP4482] (ab124703)

Please note: All products are "FOR RESEARCH USE ONLY. NOT FOR USE IN DIAGNOSTIC PROCEDURES"

Our Abpromise to you: Quality guaranteed and expert technical support

- Replacement or refund for products not performing as stated on the datasheet
- Valid for 12 months from date of delivery
- Response to your inquiry within 24 hours
- We provide support in Chinese, English, French, German, Japanese and Spanish
- Extensive multi-media technical resources to help you
- We investigate all quality concerns to ensure our products perform to the highest standards

If the product does not perform as described on this datasheet, we will offer a refund or replacement. For full details of the Abpromise, please visit <https://www.abcam.com/abpromise> or contact our technical team.

Terms and conditions

- Guarantee only valid for products bought direct from Abcam or one of our authorized distributors