

## Product datasheet

# Anti-Renalase antibody [RNLS/1940] - BSA and Azide free ab237887

[2 Images](#)

### Overview

<b>Product name</b>	Anti-Renalase antibody [RNLS/1940] - BSA and Azide free
<b>Description</b>	Mouse monoclonal [RNLS/1940] to Renalase - BSA and Azide free
<b>Host species</b>	Mouse
<b>Tested applications</b>	<b>Suitable for:</b> IHC-P
<b>Species reactivity</b>	<b>Reacts with:</b> Human
<b>Immunogen</b>	Recombinant fragment within Human Renalase aa 34-235. The exact sequence is proprietary. Database link: <a href="#">Q5VYX0</a>
<b>Positive control</b>	IHC-P: Human kidney tissue.
<b>General notes</b>	<p>The Life Science industry has been in the grips of a reproducibility crisis for a number of years. Abcam is leading the way in addressing this with our range of recombinant monoclonal antibodies and knockout edited cell lines for gold-standard validation. Please check that this product meets your needs before purchasing.</p> <p>If you have any questions, special requirements or concerns, please send us an inquiry and/or contact our Support team ahead of purchase. Recommended alternatives for this product can be found below, along with publications, customer reviews and Q&amp;As</p>

### Properties

<b>Form</b>	Liquid
<b>Storage instructions</b>	Shipped at 4°C. Store at +4°C short term (1-2 weeks). Upon delivery aliquot. Store at -20°C long term. Avoid freeze / thaw cycle.
<b>Storage buffer</b>	pH: 7.2 Constituent: PBS
<b>Carrier free</b>	Yes
<b>Purity</b>	Protein A/G purified
<b>Purification notes</b>	Purified from Bioreactor Concentrate by Protein A/G.
<b>Clonality</b>	Monoclonal
<b>Clone number</b>	RNLS/1940

Isotype

IgG2b

## Applications

### The Abpromise guarantee

Our **Abpromise guarantee** covers the use of ab237887 in the following tested applications.

The application notes include recommended starting dilutions; optimal dilutions/concentrations should be determined by the end user.

Application	Abreviews	Notes
IHC-P		Use a concentration of 1 - 2 µg/ml. Perform heat mediated antigen retrieval with citrate buffer pH 6 before commencing with IHC staining protocol. Incubate with primary antibody for 30 minutes at room temperature.

## Target

### Function

Probable FAD-dependent amine oxidase secreted by the kidney, which circulates in blood and modulates cardiac function and systemic blood pressure. Degrades catecholamines such as dopamine, norepinephrine and epinephrine in vitro. Lowers blood pressure in vivo by decreasing cardiac contractility and heart rate and preventing a compensatory increase in peripheral vascular tone, suggesting a causal link to the increased plasma catecholamine and heightened cardiovascular risk. High concentrations of catecholamines activate plasma renalase and promotes its secretion and synthesis (By similarity). According to PubMed:17385068, is unlikely that renalase has physiologically relevant catecholamine-oxidizing activity.

### Tissue specificity

Secreted into the blood by the kidney. Highly expressed in the kidney, expressed at lower level in heart, skeletal muscle and small intestine. Its plasma concentration is markedly reduced in patients with end-stage renal disease, as compared with healthy subjects.

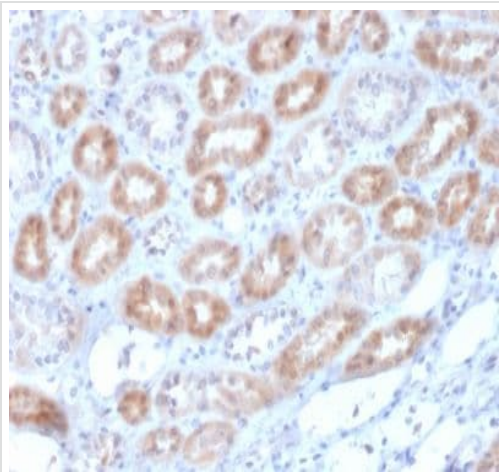
### Sequence similarities

Belongs to the renalase family.

### Cellular localization

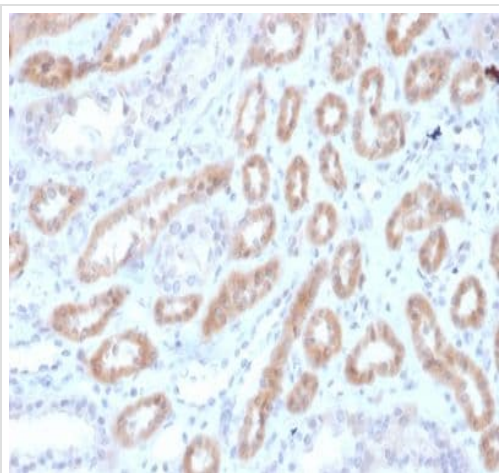
Secreted.

## Images



Immunohistochemistry (Formalin/PFA-fixed paraffin-embedded sections) - Anti-Renalase antibody  
[RNLS/1940] - BSA and Azide free (ab237887)

Formalin-fixed, paraffin-embedded human kidney tissue stained for Renalase using ab237887 at 2 µg/ml in immunohistochemical analysis.



Immunohistochemistry (Formalin/PFA-fixed paraffin-embedded sections) - Anti-Renalase antibody  
[RNLS/1940] - BSA and Azide free (ab237887)

Formalin-fixed, paraffin-embedded human kidney tissue stained for Renalase using ab237887 at 2 µg/ml in immunohistochemical analysis.

**Please note:** All products are "FOR RESEARCH USE ONLY. NOT FOR USE IN DIAGNOSTIC PROCEDURES"

### Our Abpromise to you: Quality guaranteed and expert technical support

- Replacement or refund for products not performing as stated on the datasheet
- Valid for 12 months from date of delivery
- Response to your inquiry within 24 hours
- We provide support in Chinese, English, French, German, Japanese and Spanish
- Extensive multi-media technical resources to help you
- We investigate all quality concerns to ensure our products perform to the highest standards

If the product does not perform as described on this datasheet, we will offer a refund or replacement. For full details of the Abpromise,

please visit <https://www.abcam.com/abpromise> or contact our technical team.

#### **Terms and conditions**

---

- Guarantee only valid for products bought direct from Abcam or one of our authorized distributors