




Anti-Renin antibody ab180608

★ ★ ★ ★ ★ [1 Abreviews](#) [3 References](#) [1 Image](#)

Overview

Product name	Anti-Renin antibody
Description	Rabbit polyclonal to Renin
Host species	Rabbit
Tested applications	Suitable for: WB
Species reactivity	Reacts with: Human Predicted to work with: Chimpanzee, Cynomolgus monkey, Rhesus monkey 
Immunogen	Recombinant full length protein corresponding to Human Renin aa 67-406. Mature protein. Sequence: LTLGNTTSSVILTNYMDTQYYGEIGITPPQTFKVVFDTGSS NVWVPSSK CSRLYTACVYHKLFDA SDSSSYKHNGTELTRYSTGTVSG FLSQDIITVG GITVTQMFGEVTEMPALPFMLAEFDGVVGMGFIEQAIGRV TPIFDNIISQ GVLKEDVFSFYNNRDSSENSQSLGGQIVLGGSDPQHYEGN FHYINLIKTVG WQIQMKGVSVGSSTLLCEDGCLALVDTGASYSGSTSSIE KLMEALGAKK RLFDYVVKCNEGPTLPDISFHLGGKEYLTLSADYVFQESY SSKKLCTLAI HAMDIPPPTGPTWALGATFIRKFYTEFDRRNNRIGFALAR Database link: P00797 <div>  Run BLAST with  Run BLAST with </div>
Positive control	K562, 293T and HepG2 cell extracts.
General notes	<p>The Life Science industry has been in the grips of a reproducibility crisis for a number of years. Abcam is leading the way in addressing this with our range of recombinant monoclonal antibodies and knockout edited cell lines for gold-standard validation. Please check that this product meets your needs before purchasing.</p> <p>If you have any questions, special requirements or concerns, please send us an inquiry and/or contact our Support team ahead of purchase. Recommended alternatives for this product can be found below, along with publications, customer reviews and Q&As</p>

Properties

Form	Liquid
Storage instructions	Shipped at 4°C. Store at +4°C short term (1-2 weeks). Upon delivery aliquot. Store at -20°C long term. Avoid freeze / thaw cycle.
Storage buffer	pH: 7.30 Preservative: 0.02% Sodium azide Constituents: 49% PBS, 50% Glycerol
Purity	Immunogen affinity purified
Clonality	Polyclonal
Isotype	IgG

Applications

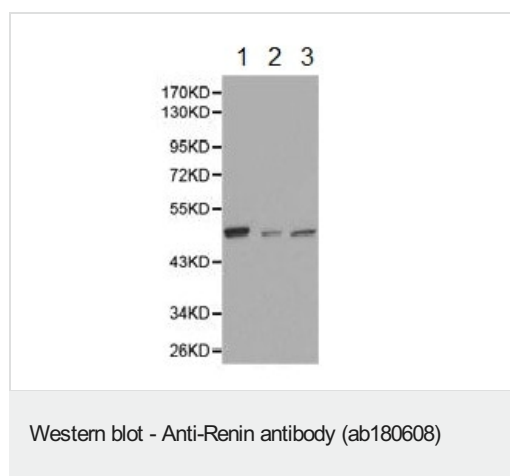
The Abpromise guarantee Our **Abpromise guarantee** covers the use of ab180608 in the following tested applications. The application notes include recommended starting dilutions; optimal dilutions/concentrations should be determined by the end user.

Application	Abreviews	Notes
WB	★☆☆☆☆ (1)	1/500 - 1/2000. Predicted molecular weight: 45 kDa.

Target

Function	Renin is a highly specific endopeptidase, whose only known function is to generate angiotensin I from angiotensinogen in the plasma, initiating a cascade of reactions that produce an elevation of blood pressure and increased sodium retention by the kidney.
Involvement in disease	Defects in REN are a cause of renal tubular dysgenesis (RTD) [MIM:267430]. RTD is an autosomal recessive severe disorder of renal tubular development characterized by persistent fetal anuria and perinatal death, probably due to pulmonary hypoplasia from early-onset oligohydramnios (the Potter phenotype). Defects in REN are the cause of familial juvenile hyperuricemic nephropathy type 2 (HNFJ2) [MIM:613092]. It is a renal disease characterized by juvenile onset of hyperuricemia, slowly progressive renal failure and anemia.
Sequence similarities	Belongs to the peptidase A1 family.
Cellular localization	Secreted. Membrane. Associated to membranes via binding to ATP6AP2.

Images



All lanes : Anti-Renin antibody (ab180608) at 1/500 dilution

Lane 1 : K562 cell extract

Lane 2 : 293T cell extract

Lane 3 : HepG2 cell extract

Predicted band size: 45 kDa

Please note: All products are "FOR RESEARCH USE ONLY. NOT FOR USE IN DIAGNOSTIC PROCEDURES"

Our Abpromise to you: Quality guaranteed and expert technical support

- Replacement or refund for products not performing as stated on the datasheet
- Valid for 12 months from date of delivery
- Response to your inquiry within 24 hours
- We provide support in Chinese, English, French, German, Japanese and Spanish
- Extensive multi-media technical resources to help you
- We investigate all quality concerns to ensure our products perform to the highest standards

If the product does not perform as described on this datasheet, we will offer a refund or replacement. For full details of the Abpromise, please visit <https://www.abcam.com/abpromise> or contact our technical team.

Terms and conditions

- Guarantee only valid for products bought direct from Abcam or one of our authorized distributors