

## Product datasheet

### Anti-Renin antibody [EPR20693] $\alpha$ b212197

Recombinant RabMAb

★★★★★ [8 Abreviews](#) [8 References](#) [5 Images](#)

#### Overview

Product name	Anti-Renin antibody [EPR20693]
Description	Rabbit monoclonal [EPR20693] to Renin
Host species	Rabbit
Tested applications	<b>Suitable for:</b> IHC-P, IHC-Fr <b>Unsuitable for:</b> WB
Species reactivity	<b>Reacts with:</b> Mouse, Rat, Human
Immunogen	Recombinant fragment. This information is proprietary to Abcam and/or its suppliers.
Positive control	IHC-P: Human and mouse kidney tissues. IHC-Fr: Mouse and rat kidney tissues.
General notes	This product is a recombinant monoclonal antibody, which offers several advantages including: <ul style="list-style-type: none"> <li>- High batch-to-batch consistency and reproducibility</li> <li>- Improved sensitivity and specificity</li> <li>- Long-term security of supply</li> <li>- Animal-free production</li> </ul> For more information <a href="#">see here</a> . Our RabMAb <sup>®</sup> technology is a patented hybridoma-based technology for making rabbit monoclonal antibodies. For details on our patents, please refer to <a href="#">RabMAb<sup>®</sup> patents</a> .

#### Properties

Form	Liquid
Storage instructions	Shipped at 4°C. Store at +4°C short term (1-2 weeks). Upon delivery aliquot. Store at -20°C long term. Avoid freeze / thaw cycle.
Storage buffer	pH: 7.2 Preservative: 0.09% Sodium azide Constituents: 0.05% BSA, 40% Glycerol (glycerin, glycerine), PBS
Purity	Protein A purified
Clonality	Monoclonal
Clone number	EPR20693
Isotype	IgG

## Applications

### The Abpromise guarantee

Our [Abpromise guarantee](#) covers the use of ab212197 in the following tested applications.

The application notes include recommended starting dilutions; optimal dilutions/concentrations should be determined by the end user.

Application	Abreviews	Notes
IHC-P	★★★★★ (4)	1/2000. Perform heat mediated antigen retrieval with Tris/EDTA buffer pH 9.0 before commencing with IHC staining protocol. (for human); Use at 1/5000 dilution (for mouse).  This antibody is not recommended for rat species in IHC application. In our hands this antibody showed non-specific staining on rat kidney tissue sections
IHC-Fr		1/6000.

### Application notes

Is unsuitable for WB.

## Target

### Function

Renin is a highly specific endopeptidase, whose only known function is to generate angiotensin I from angiotensinogen in the plasma, initiating a cascade of reactions that produce an elevation of blood pressure and increased sodium retention by the kidney.

### Involvement in disease

Defects in REN are a cause of renal tubular dysgenesis (RTD) [MIM:267430]. RTD is an autosomal recessive severe disorder of renal tubular development characterized by persistent fetal anuria and perinatal death, probably due to pulmonary hypoplasia from early-onset oligohydramnios (the Potter phenotype).  
Defects in REN are the cause of familial juvenile hyperuricemic nephropathy type 2 (HNFJ2) [MIM:613092]. It is a renal disease characterized by juvenile onset of hyperuricemia, slowly progressive renal failure and anemia.

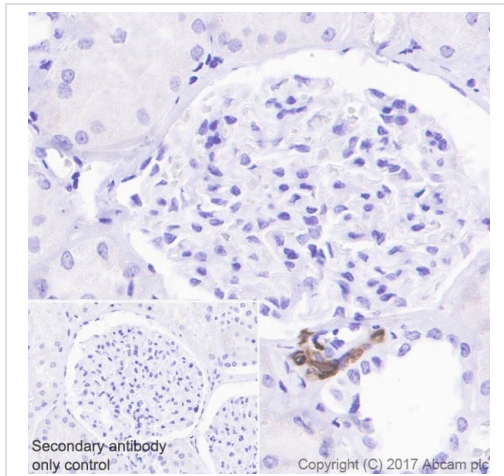
### Sequence similarities

Belongs to the peptidase A1 family.

### Cellular localization

Secreted. Membrane. Associated to membranes via binding to ATP6AP2.

## Images

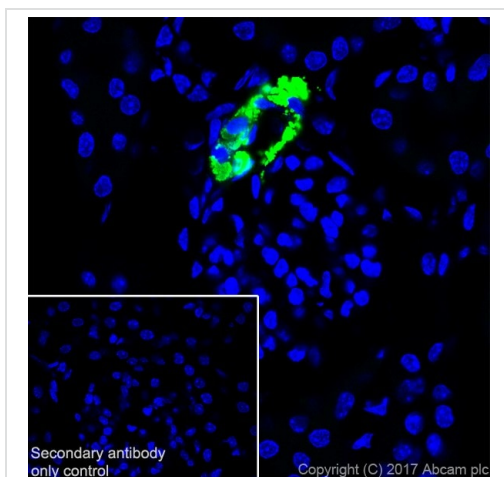


Immunohistochemistry (Formalin/PFA-fixed paraffin-embedded sections) - Anti-Renin antibody [EPR20693] (ab212197)

Immunohistochemical analysis of paraffin-embedded human kidney tissue labeling Renin with ab212197 at 1/2000 dilution, followed by Goat Anti-Rabbit IgG H&L (HRP) Ready to use. Cytoplasmic staining on juxtaglomerular cells of human kidney (PMID: 1898348). Counter stained with hematoxylin.

Secondary antibody only control: Used PBS instead of primary antibody, secondary antibody is Goat Anti-Rabbit IgG H&L (HRP) Ready to use.

Heat mediated antigen retrieval performed using [ab93684](#) (Tris/EDTA buffer, pH 9.0).



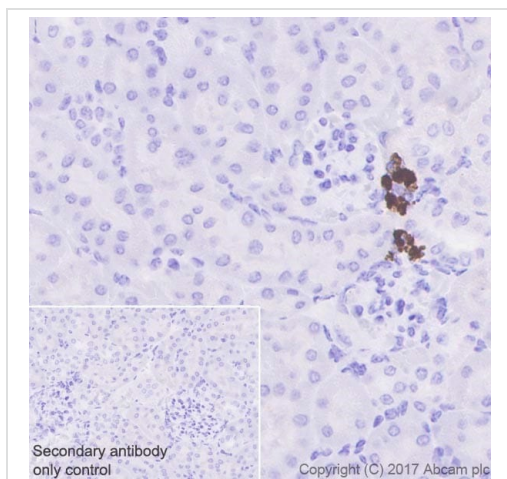
Immunohistochemistry (Frozen sections) - Anti-Renin antibody [EPR20693] (ab212197)

Immunohistochemical analysis of 4% paraformaldehyde-fixed, 0.2% Triton X-100 permeabilized frozen mouse kidney tissue labeling Renin with ab212197 at 1/6000 dilution, followed by Goat Anti-Rabbit IgG H&L (Alexa Fluor® 488) ([ab150077](#)) secondary antibody at 1/1000 dilution (green). Positive cytoplasmic staining in juxtaglomerular cells of mouse kidney tissue section (PMID: 27080979).

The nuclear counter stain is DAPI (blue).

Secondary antibody only control: Used PBS instead of primary antibody, secondary antibody is Goat Anti-Rabbit IgG H&L (Alexa Fluor® 488) ([ab150077](#)) secondary antibody at 1/1000 dilution.

Heat mediated antigen retrieval performed using Tris-EDTA buffer (pH9.0) ([ab94681](#)).

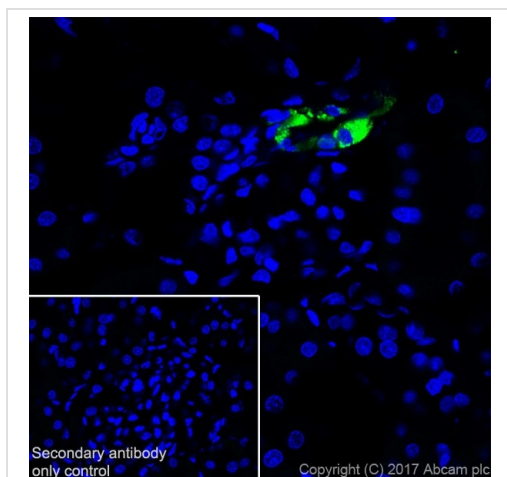


Immunohistochemistry (Formalin/PFA-fixed paraffin-embedded sections) - Anti-Renin antibody [EPR20693] (ab212197)

Immunohistochemical analysis of paraffin-embedded mouse kidney tissue labeling Renin with ab212197 at 1/5000 dilution, followed by Goat Anti-Rabbit IgG H&L (HRP) Ready to use. Cytoplasmic staining on juxtaglomerular cells of mouse kidney (PMID: 1898348). Counter stained with hematoxylin.

Secondary antibody only control: Used PBS instead of primary antibody, secondary antibody is Goat Anti-Rabbit IgG H&L (HRP) Ready to use.

Heat mediated antigen retrieval performed using [ab93684](#) (Tris/EDTA buffer, pH 9.0).



Immunohistochemistry (Frozen sections) - Anti-Renin antibody [EPR20693] (ab212197)

Immunohistochemical analysis of 4% paraformaldehyde-fixed, 0.2% Triton X-100 permeabilized frozen rat kidney tissue labeling Renin with ab212197 at 1/6000 dilution, followed by Goat Anti-Rabbit IgG H&L (Alexa Fluor® 488) ([ab150077](#)) secondary antibody at 1/1000 dilution (green). Positive cytoplasmic staining in juxtaglomerular cells of rat kidney tissue section (PMID: 27080979).

The nuclear counter stain is DAPI (blue).

Secondary antibody only control: Used PBS instead of primary antibody, secondary antibody is Goat Anti-Rabbit IgG H&L (Alexa Fluor® 488) ([ab150077](#)) secondary antibody at 1/1000 dilution.

Heat mediated antigen retrieval performed using Tris-EDTA buffer (pH9.0) ([ab94681](#)).

### Why choose a recombinant antibody?



**Research with confidence**  
Consistent and reproducible results



**Long-term and scalable supply**  
Recombinant technology



**Success from the first experiment**  
Confirmed specificity



**Ethical standards compliant**  
Animal-free production

Anti-Renin antibody [EPR20693] (ab212197)

**Please note:** All products are "FOR RESEARCH USE ONLY. NOT FOR USE IN DIAGNOSTIC PROCEDURES"

### **Our Abpromise to you: Quality guaranteed and expert technical support**

---

- Replacement or refund for products not performing as stated on the datasheet
- Valid for 12 months from date of delivery
- Response to your inquiry within 24 hours
  
- We provide support in Chinese, English, French, German, Japanese and Spanish
- Extensive multi-media technical resources to help you
- We investigate all quality concerns to ensure our products perform to the highest standards

If the product does not perform as described on this datasheet, we will offer a refund or replacement. For full details of the Abpromise, please visit <https://www.abcam.com/abpromise> or contact our technical team.

### **Terms and conditions**

---

- Guarantee only valid for products bought direct from Abcam or one of our authorized distributors