


Anti-Renin Receptor antibody ab151241

2 Images

Overview

Product name	Anti-Renin Receptor antibody
Description	Rabbit polyclonal to Renin Receptor
Host species	Rabbit
Tested applications	Suitable for: WB, ICC/IF
Species reactivity	Reacts with: Human Predicted to work with: Mouse, Rat, Cow 
Immunogen	Recombinant fragment corresponding to Human Renin Receptor aa 146-350.
Positive control	293T, A431, H1299, HeLa, HepG2, Molt-4 and Raji cell lysates; HepG2 cells.
General notes	<p>The Life Science industry has been in the grips of a reproducibility crisis for a number of years. Abcam is leading the way in addressing this with our range of recombinant monoclonal antibodies and knockout edited cell lines for gold-standard validation. Please check that this product meets your needs before purchasing.</p> <p>If you have any questions, special requirements or concerns, please send us an inquiry and/or contact our Support team ahead of purchase. Recommended alternatives for this product can be found below, along with publications, customer reviews and Q&As</p>

Properties

Form	Liquid
Storage instructions	Shipped at 4°C. Upon delivery aliquot and store at -20°C. Avoid repeated freeze / thaw cycles.
Storage buffer	pH: 7.00 Preservative: 0.025% Proclin 300 Constituents: 79% PBS, 20% Glycerol (glycerin, glycerine)
Purity	Immunogen affinity purified
Clonality	Polyclonal
Isotype	IgG

Applications

The **Abpromise guarantee** Our **Abpromise guarantee** covers the use of ab151241 in the following tested applications.

The application notes include recommended starting dilutions; optimal dilutions/concentrations should be determined by the end user.

Application	Abreviews	Notes
WB		1/500 - 1/3000. Predicted molecular weight: 39 kDa.
ICC/IF		1/100 - 1/1000.

Target

Function

Functions as a renin and prorenin cellular receptor. May mediate renin-dependent cellular responses by activating ERK1 and ERK2. By increasing the catalytic efficiency of renin in AGT/angiotensinogen conversion to angiotensin I, it may also play a role in the renin-angiotensin system (RAS).

Tissue specificity

Expressed in brain, heart, placenta, liver, kidney and pancreas. Barely detectable in lung and skeletal muscles. In the kidney cortex it is restricted to the mesangium of glomeruli. In the coronary and kidney artery it is expressed in the subendothelium, associated to smooth muscles where it colocalizes with REN. Expressed in vascular structures and by syncytiotrophoblast cells in the mature fetal placenta.

Involvement in disease

Defects in ATP6AP2 are a cause of mental retardation X-linked with epilepsy (MRXE) [MIM:300423]. MRXE is a syndromic mental retardation. Patients manifest mild to moderate mental retardation associated with epilepsy, delays in motor milestones and speech acquisition in infancy.

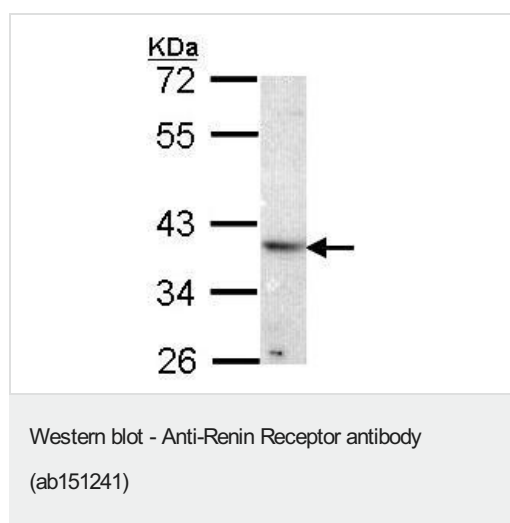
Post-translational modifications

Phosphorylated.

Cellular localization

Membrane.

Images



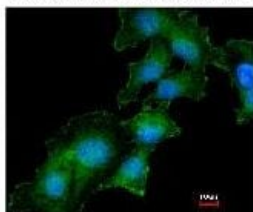
Anti-Renin Receptor antibody (ab151241) at 1/1000 dilution +
HeLa whole cell lysate at 30 µg

Predicted band size: 39 kDa

10% SDS PAGE



Costained with Hoechst 33342



Immunofluorescence analysis of methanol-fixed HepG2 cells labeling Renin Receptor with ab151241 at 1/200 dilution. The image in the lower panel is costained with Hoechst 33342.

Immunocytochemistry/ Immunofluorescence - Anti-Renin Receptor antibody (ab151241)

Please note: All products are "FOR RESEARCH USE ONLY. NOT FOR USE IN DIAGNOSTIC PROCEDURES"

Our Abpromise to you: Quality guaranteed and expert technical support

- Replacement or refund for products not performing as stated on the datasheet
- Valid for 12 months from date of delivery
- Response to your inquiry within 24 hours
- We provide support in Chinese, English, French, German, Japanese and Spanish
- Extensive multi-media technical resources to help you
- We investigate all quality concerns to ensure our products perform to the highest standards

If the product does not perform as described on this datasheet, we will offer a refund or replacement. For full details of the Abpromise, please visit <https://www.abcam.com/abpromise> or contact our technical team.

Terms and conditions

- Guarantee only valid for products bought direct from Abcam or one of our authorized distributors