


## Product datasheet

# Anti-RENT1/hUPF1 antibody ab10510

★★★★★ [2 Abreviews](#) [3 References](#) [2 Images](#)

### Overview

---

<b>Product name</b>	Anti-RENT1/hUPF1 antibody
<b>Description</b>	Goat polyclonal to RENT1/hUPF1
<b>Host species</b>	Goat
<b>Tested applications</b>	<b>Suitable for:</b> WB
<b>Species reactivity</b>	<b>Reacts with:</b> Mouse, Human <b>Predicted to work with:</b> Horse, Chicken, Guinea pig, Cow, Dog, Turkey, Pig, Xenopus laevis, Chimpanzee, Drosophila melanogaster, Zebrafish, Rhesus monkey, Gorilla, Orangutan, Xenopus tropicalis, Platypus 
<b>Immunogen</b>	Synthetic peptide corresponding to Human RENT1/hUPF1 aa 250-350. NP_002902.2 (GeneID 5976) Database link: <a href="#">Q92900</a>
<b>Positive control</b>	WB: Whole cell lysate from lymphoblastoid cell lines (EBV-immortalized B-cell from a normal individual); HeLa, NIH/3T3 cells
<b>General notes</b>	<p>The Life Science industry has been in the grips of a reproducibility crisis for a number of years. Abcam is leading the way in addressing this with our range of recombinant monoclonal antibodies and knockout edited cell lines for gold-standard validation. Please check that this product meets your needs before purchasing.</p> <p>If you have any questions, special requirements or concerns, please send us an inquiry and/or contact our Support team ahead of purchase. Recommended alternatives for this product can be found below, along with publications, customer reviews and Q&amp;As</p>

### Properties

---

<b>Form</b>	Liquid
<b>Storage instructions</b>	Shipped at 4°C. Upon delivery aliquot and store at -20°C. Avoid freeze / thaw cycles.
<b>Storage buffer</b>	pH: 7 Preservative: 0.1% Sodium azide Constituents: 0.021% PBS, 1.764% Sodium citrate, 1.815% Tris
<b>Purity</b>	Immunogen affinity purified
<b>Purification notes</b>	Antibodies were affinity purified using the peptide immobilized on solid support.
<b>Clonality</b>	Polyclonal

Isotype

IgG

## Applications

### The Abpromise guarantee

Our **Abpromise guarantee** covers the use of ab10510 in the following tested applications.

The application notes include recommended starting dilutions; optimal dilutions/concentrations should be determined by the end user.

Application	Abreviews	Notes
WB	★★★★★ (2)	1/1000 - 1/2500. Detects a band of approximately 140 kDa (predicted molecular weight: 134 kDa).

## Target

### Function

Plays a role in replication-dependent histone mRNA degradation at the end of phase S. Part of a post-splicing multiprotein complex. Involved in nonsense-mediated decay (NMD) as part of the SMG1C complex, a mRNA surveillance complex that recognizes and degrades mRNAs containing premature translation termination codons (PTCs). The complex probably acts by associating with ribosomes during translation termination on mRNPs. If an exon junction complex (EJC) is located 50-55 or more nucleotides downstream from the termination codon, RENT1 is phosphorylated by SMG1, triggering nonsense-mediated decay (NMD). Essential for embryonic viability.

### Tissue specificity

Ubiquitous.

### Sequence similarities

Belongs to the DNA2/NAM7 helicase family.  
Contains 1 C2H2-type zinc finger.

### Domain

The [ST]-Q motif constitutes a recognition sequence for kinases from the PI3/PI4-kinase family.

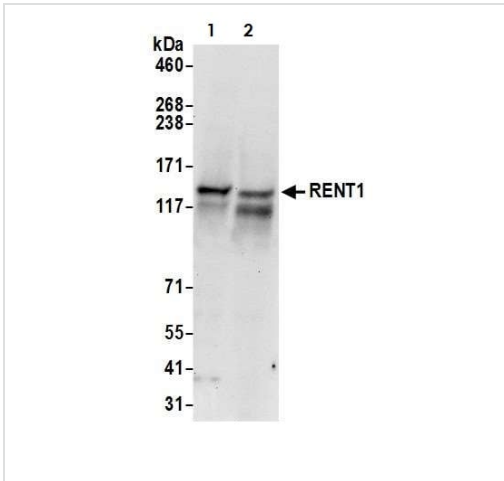
### Post-translational modifications

Phosphorylated by SMG1; required for formation of mRNA surveillance complexes.  
Phosphorylated upon DNA damage, probably by ATM or ATR.

### Cellular localization

Cytoplasm. Cytoplasm > P-body. Hyperphosphorylated form is targeted to the P-body, while unphosphorylated protein is distributed throughout the cytoplasm.

## Images



Western blot - Anti-RENT1/hUPF1 antibody (ab10510)

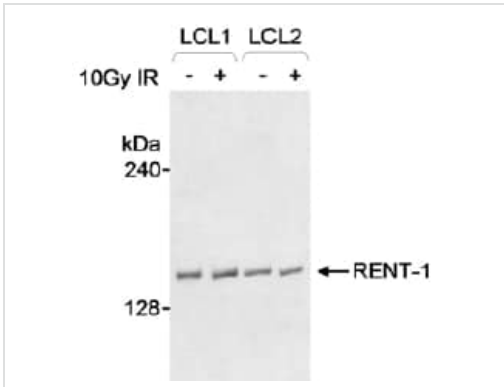
**All lanes :** Anti-RENT1/hUPF1 antibody (ab10510) at 0.4 µg/ml

**Lane 1 :** HeLa whole cell lysate

**Lane 2 :** NIH/3T3 whole cell lysate

**Predicted band size:** 134 kDa

**Exposure time:** 30 seconds



Western blot - Anti-RENT1/hUPF1 antibody (ab10510)

ab10510 detection of human RENT1 by Western blot. *Samples:* Whole cell lysate (30 µg) from lymphoblastoid cell lines (EBV-immortalized B-cell from a normal individual). *Antibody:* ab10510 used at 1 µg/ml. *Detection:* Chemiluminescence.

ab10510 detection of human RENT1 by Western blot. *Samples:* Whole cell lysate (30 µg) from lymphoblastoid cell lines (EBV-immortalized B-cell from a normal individual). *Antibody:* ab10510 used at 1 µg/ml. *Detection:* Chemiluminescence.

**Please note:** All products are "FOR RESEARCH USE ONLY. NOT FOR USE IN DIAGNOSTIC PROCEDURES"

### Our Abpromise to you: Quality guaranteed and expert technical support

- Replacement or refund for products not performing as stated on the datasheet
- Valid for 12 months from date of delivery
- Response to your inquiry within 24 hours
- We provide support in Chinese, English, French, German, Japanese and Spanish
- Extensive multi-media technical resources to help you
- We investigate all quality concerns to ensure our products perform to the highest standards

If the product does not perform as described on this datasheet, we will offer a refund or replacement. For full details of the Abpromise, please visit <https://www.abcam.com/abpromise> or contact our technical team.

### Terms and conditions

- Guarantee only valid for products bought direct from Abcam or one of our authorized distributors