




## Product datasheet

# Anti-Retinal protein 4 antibody ab169652

2 Images

### Overview

<b>Product name</b>	Anti-Retinal protein 4 antibody
<b>Description</b>	Mouse polyclonal to Retinal protein 4
<b>Host species</b>	Mouse
<b>Tested applications</b>	<b>Suitable for:</b> WB, ICC/IF
<b>Species reactivity</b>	<b>Reacts with:</b> Human <b>Predicted to work with:</b> Mouse, Rat, Cow, Dog 
<b>Immunogen</b>	Recombinant full length protein within Human Retinal protein 4 aa 1-250. The exact immunogen sequence used to generate this antibody is proprietary information. If additional detail on the immunogen is needed to determine the suitability of the antibody for your needs, please <b><u>contact</u></b> our Scientific Support team to discuss your requirements.  <b><u>Run BLAST with</u></b>  <b><u>Run BLAST with</u></b>
<b>Positive control</b>	Lysate from 293T cells transfected with Retinal protein 4; HeLa cells.
<b>General notes</b>	<p>The Life Science industry has been in the grips of a reproducibility crisis for a number of years. Abcam is leading the way in addressing this with our range of recombinant monoclonal antibodies and knockout edited cell lines for gold-standard validation. Please check that this product meets your needs before purchasing.</p> <p>If you have any questions, special requirements or concerns, please send us an inquiry and/or contact our Support team ahead of purchase. Recommended alternatives for this product can be found below, along with publications, customer reviews and Q&amp;As</p>

### Properties

<b>Form</b>	Liquid
<b>Storage instructions</b>	Shipped at 4°C. Store at +4°C short term (1-2 weeks). Upon delivery aliquot. Store at -20°C long term.
<b>Storage buffer</b>	pH: 7.4 Constituent: 100% PBS
<b>Purity</b>	Protein A purified
<b>Clonality</b>	Polyclonal
<b>Isotype</b>	IgG

## Applications

### The Abpromise guarantee

Our **Abpromise guarantee** covers the use of ab169652 in the following tested applications.

The application notes include recommended starting dilutions; optimal dilutions/concentrations should be determined by the end user.

Application	Abreviews	Notes
WB		Use a concentration of 1 µg/ml. Predicted molecular weight: 27 kDa.
ICC/IF		Use a concentration of 10 µg/ml.

## Target

### Function

Myristoyl-binding protein that acts as a cargo adapter: specifically binds the myristoyl moiety of a subset of N-terminally myristoylated proteins and is required for their localization. Binds myristoylated GNAT1 and is required for G-protein localization and trafficking in sensory neurons. Binds myristoylated NPHP3; however, in contrast to UNC119B, does not seem to play a major role in ciliary membrane localization of NPHP3. Does not bind all myristoylated proteins. Probably plays a role in trafficking proteins in photoreceptor cells.

### Tissue specificity

Retinal-specific. Localized in photoreceptor synapses in the outer plexiform layer of the retina.

### Involvement in disease

Note=Defects in UNC119 may be a cause of cone-rod dystrophy. A mutation was found in a 57-year-old woman with late-onset cone-rod dystrophy: from 40 year old, the patient suffered from poor night vision, defective color vision and light-sensitivity. At 57 year old, she displayed reduced visual acuity, myopia, macular atrophy and pericentral ring scotomas. The disease was caused by a heterozygous mutation causing premature termination and truncated UNC119 protein with dominant-negative effect.

### Sequence similarities

Belongs to the PDE6D/unc-119 family.

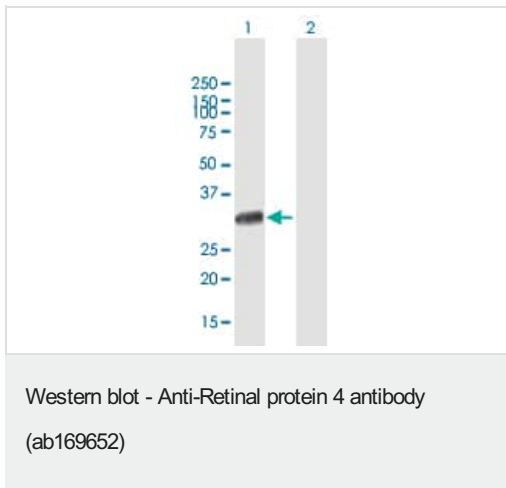
### Domain

Adopts an immunoglobulin-like beta-sandwich fold forming a hydrophobic cavity that capture N-terminally myristoylated target peptides (PubMed:21642972). Phe residues within the hydrophobic beta sandwich are required for myristate binding (PubMed:22085962).

### Cellular localization

Cytoplasm > cytoskeleton > centrosome.

## Images



**All lanes :** Anti-Retinal protein 4 antibody (ab169652) at 1 µg/ml

**Lane 1 :** Retinal protein 4-transfected 293T cell lysate

**Lane 2 :** Non-transfected 293T cell lysate

Lysates/proteins at 15 µl per lane.

Developed using the ECL technique.

**Predicted band size:** 27 kDa



Immunofluorescence analysis of paraformaldehyde-fixed HeLa cells, labeling Retinal protein 4 using ab169652 at 10 µg/ml.

**Please note:** All products are "FOR RESEARCH USE ONLY. NOT FOR USE IN DIAGNOSTIC PROCEDURES"

### Our Abpromise to you: Quality guaranteed and expert technical support

- Replacement or refund for products not performing as stated on the datasheet
- Valid for 12 months from date of delivery
- Response to your inquiry within 24 hours
- We provide support in Chinese, English, French, German, Japanese and Spanish
- Extensive multi-media technical resources to help you
- We investigate all quality concerns to ensure our products perform to the highest standards

If the product does not perform as described on this datasheet, we will offer a refund or replacement. For full details of the Abpromise, please visit <https://www.abcam.com/abpromise> or contact our technical team.

### Terms and conditions

- Guarantee only valid for products bought direct from Abcam or one of our authorized distributors