



Anti-REXO1 antibody ab243536

[1 References](#) [2 Images](#)

Overview

Product name	Anti-REXO1 antibody
Description	Rabbit polyclonal to REXO1
Host species	Rabbit
Tested applications	Suitable for: IHC-P, WB
Species reactivity	Reacts with: Human
Immunogen	Recombinant fragment corresponding to Human REXO1 aa 200-350. Database link: Q8N1G1  Run BLAST with  Run BLAST with
Positive control	IHC-P: Human rectum tissue. WB: Human plasma.
General notes	<p>The Life Science industry has been in the grips of a reproducibility crisis for a number of years. Abcam is leading the way in addressing this with our range of recombinant monoclonal antibodies and knockout edited cell lines for gold-standard validation. Please check that this product meets your needs before purchasing.</p> <p>If you have any questions, special requirements or concerns, please send us an inquiry and/or contact our Support team ahead of purchase. Recommended alternatives for this product can be found below, along with publications, customer reviews and Q&As</p>

Properties

Form	Liquid
Storage instructions	Shipped at 4°C. Store at +4°C short term (1-2 weeks). Upon delivery aliquot. Store at -20°C long term. Avoid freeze / thaw cycle.
Storage buffer	pH: 7.20 Preservative: 0.02% Sodium azide Constituents: 40% Glycerol (glycerin, glycerine), PBS
Purity	Immunogen affinity purified
Clonality	Polyclonal
Isotype	IgG

Applications

The Abpromise guarantee

Our **Abpromise guarantee** covers the use of ab243536 in the following tested applications.

The application notes include recommended starting dilutions; optimal dilutions/concentrations should be determined by the end user.

Application	Abreviews	Notes
IHC-P		1/200 - 1/500. Perform heat mediated antigen retrieval with citrate buffer pH 6 before commencing with IHC staining protocol.
WB		Use a concentration of 0.04 - 0.4 µg/ml.

Target

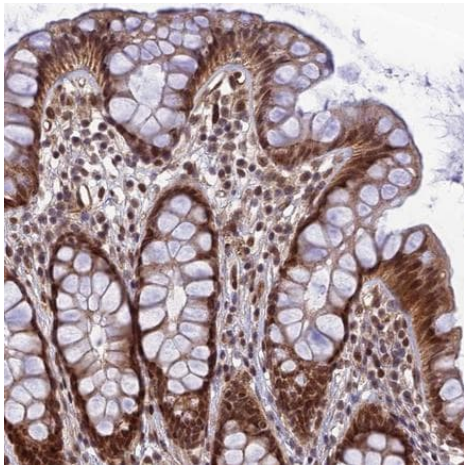
Relevance

REXO1 or Elongin A-binding protein 1 (EloA-BP1) is an exonuclease domain-containing protein that can bind to Elongin. The Elongin complex stimulates the rate of transcription elongation by RNA polymerase II by suppressing the transient pausing of the polymerase at many sites along the DNA template. REXO1 is composed of 1221 amino acids and its mRNA is ubiquitously expressed. EloA-BP1 is capable of binding not only the NH(2)-terminal approximately 120 amino acid region of Elongin A, but also that of SII. Although REXO1 had no detectable effect on the rate of transcription elongation in vitro, it may play some role in the regulation of elongation in vivo.

Cellular localization

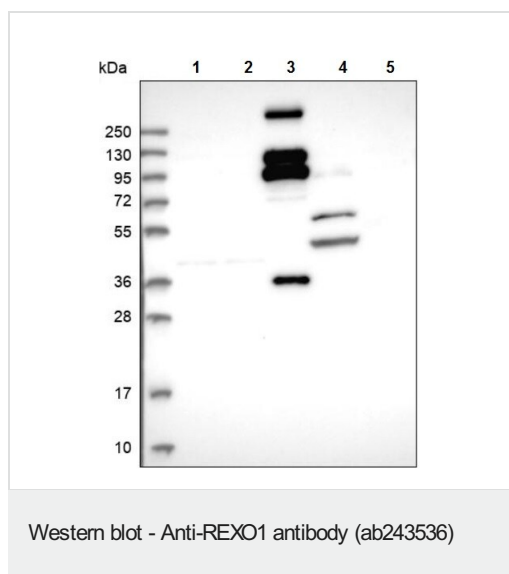
Nuclear

Images



Formalin-fixed, paraffin-embedded human rectum tissue stained for REXO1 with ab243536 at a 1/200 dilution in immunohistochemical analysis.

Immunohistochemistry (Formalin/PFA-fixed paraffin-embedded sections) - Anti-REXO1 antibody (ab243536)



All lanes : Anti-REXO1 antibody (ab243536) at 0.4 µg/ml

Lane 1 : RT4 (Human urinary bladder cancer cell line) cell lysate

Lane 2 : U-251 MG (Human brain glioma cell line) cell lysate

Lane 3 : Human plasma

Lane 4 : Human liver

Lane 5 : Human tonsil

Please note: All products are "FOR RESEARCH USE ONLY. NOT FOR USE IN DIAGNOSTIC PROCEDURES"

Our Abpromise to you: Quality guaranteed and expert technical support

- Replacement or refund for products not performing as stated on the datasheet
- Valid for 12 months from date of delivery
- Response to your inquiry within 24 hours
- We provide support in Chinese, English, French, German, Japanese and Spanish
- Extensive multi-media technical resources to help you
- We investigate all quality concerns to ensure our products perform to the highest standards

If the product does not perform as described on this datasheet, we will offer a refund or replacement. For full details of the Abpromise, please visit <https://www.abcam.com/abpromise> or contact our technical team.

Terms and conditions

- Guarantee only valid for products bought direct from Abcam or one of our authorized distributors