



Anti-RFC antibody ab272354

[1 References](#) [1 Image](#)

Overview

Product name	Anti-RFC antibody
Description	Rabbit polyclonal to RFC
Host species	Rabbit
Tested applications	Suitable for: WB
Species reactivity	Reacts with: Mouse, Rat, Human, African green monkey
Immunogen	Synthetic peptide corresponding to Human RFC aa 200-300. Database link: P41440
	 Run BLAST with  Run BLAST with
Positive control	WB: Rat brain and ovary tissue lysates; mouse brain, testis and ovary lysates; human placenta tissue lysate; HEK-293, PC-3 , 22RV1, K562, NIH/3T3 and COS-7 whole cell lysates.
General notes	<p>The Life Science industry has been in the grips of a reproducibility crisis for a number of years. Abcam is leading the way in addressing this with our range of recombinant monoclonal antibodies and knockout edited cell lines for gold-standard validation. Please check that this product meets your needs before purchasing.</p> <p>If you have any questions, special requirements or concerns, please send us an inquiry and/or contact our Support team ahead of purchase. Recommended alternatives for this product can be found below, along with publications, customer reviews and Q&As</p>

Properties

Form	Liquid
Storage instructions	Shipped at 4°C. Store at +4°C short term (1-2 weeks). Upon delivery aliquot. Store at -20°C long term. Avoid freeze / thaw cycle.
Storage buffer	Preservative: 0.025% Sodium azide Constituents: 2.5% BSA, 0.45% Sodium chloride, 0.1% Sodium phosphate dibasic dihydrate
Purity	Immunogen affinity purified
Clonality	Polyclonal
Isotype	IgG

Applications

The Abpromise guarantee

Our **Abpromise guarantee** covers the use of ab272354 in the following tested applications.

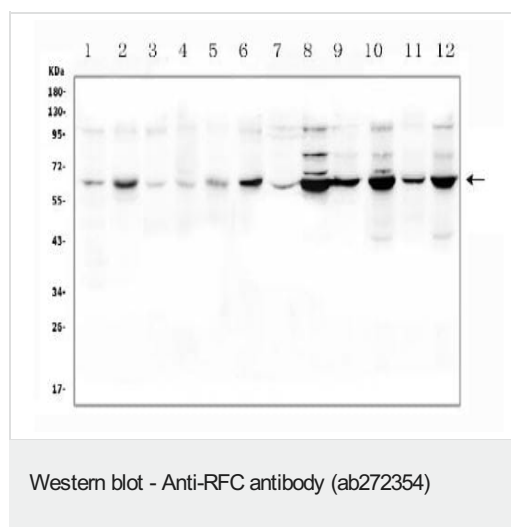
The application notes include recommended starting dilutions; optimal dilutions/concentrations should be determined by the end user.

Application	Abreviews	Notes
WB		Use a concentration of 0.1 - 0.5 µg/ml. Predicted molecular weight: 65 kDa.

Target

Function	Transporter for the intake of folate. Uptake of folate in human placental choriocarcinoma cells occurs by a novel mechanism called potocytosis which functionally couples three components, namely the folate receptor, the folate transporter, and a V-type H(+)-pump.
Tissue specificity	Placenta, liver, and to a much smaller extent, in lung.
Sequence similarities	Belongs to the reduced folate carrier (RFC) transporter (TC 2.A.48) family.
Post-translational modifications	Heavily glycosylated.
Cellular localization	Membrane.

Images



All lanes : Anti-RFC antibody (ab272354) at 0.5 µg/ml

- Lane 1 :** Rat brain tissue lysates
- Lane 2 :** Rat ovary tissue lysates
- Lane 3 :** Mouse brain tissue lysates
- Lane 4 :** Mouse testicular tissue lysates
- Lane 5 :** Mouse ovary tissue lysates
- Lane 6 :** NIH/3T3 (mouse embryo fibroblast cell line) whole cell lysates
- Lane 7 :** Human placenta tissue lysates
- Lane 8 :** HEK-293 (human epithelial cell line from embryonic kidney) whole cell lysates
- Lane 9 :** COS-7 (African green monkey kidney fibroblast-like cell line) whole cell lysates
- Lane 10 :** PC-3 (human prostate adenocarcinoma cell line) whole cell lysates
- Lane 11 :** 22RV1 (human prostate carcinoma cell line) whole cell lysates
- Lane 12 :** K562 (human chronic myelogenous leukemia cell line from bone marrow) whole cell lysates

Lysates/proteins at 50 µg per lane.

Secondary

All lanes : Goat anti-rabbit IgG-HRP at 1/10000 dilution

Developed using the ECL technique.

Predicted band size: 65 kDa

Observed band size: 65 kDa

5-20% SDS-PAGE gel.

Blocked membrane with 5% Non-fat Milk/ TBS for 1.5 hour at room temperature.

Please note: All products are "FOR RESEARCH USE ONLY. NOT FOR USE IN DIAGNOSTIC PROCEDURES"

Our Abpromise to you: Quality guaranteed and expert technical support

- Replacement or refund for products not performing as stated on the datasheet
- Valid for 12 months from date of delivery
- Response to your inquiry within 24 hours
- We provide support in Chinese, English, French, German, Japanese and Spanish
- Extensive multi-media technical resources to help you
- We investigate all quality concerns to ensure our products perform to the highest standards

If the product does not perform as described on this datasheet, we will offer a refund or replacement. For full details of the Abpromise, please visit <https://www.abcam.com/abpromise> or contact our technical team.

Terms and conditions

- Guarantee only valid for products bought direct from Abcam or one of our authorized distributors