


## Product datasheet

### Anti-RFC1 antibody ab3853

★★★★★ [1 Abreviews](#) [4 References](#) [1 Image](#)

#### Overview

Product name	Anti-RFC1 antibody
Description	Rabbit polyclonal to RFC1
Host species	Rabbit
Tested applications	<b>Suitable for:</b> WB
Species reactivity	<b>Reacts with:</b> Human <b>Predicted to work with:</b> Mouse, Chimpanzee, Gorilla 
Immunogen	Synthetic peptide within Human RFC1. The exact immunogen sequence used to generate this antibody is proprietary information. If additional detail on the immunogen is needed to determine the suitability of the antibody for your needs, please <b><a href="#">contact</a></b> our Scientific Support team to discuss your requirements. Database link: <b><a href="#">P35251</a></b>
Positive control	WB: HeLa and HEK-293T whole cell lysates.
General notes	<p>The Life Science industry has been in the grips of a reproducibility crisis for a number of years. Abcam is leading the way in addressing this with our range of recombinant monoclonal antibodies and knockout edited cell lines for gold-standard validation. Please check that this product meets your needs before purchasing.</p> <p>If you have any questions, special requirements or concerns, please send us an inquiry and/or contact our Support team ahead of purchase. Recommended alternatives for this product can be found below, along with publications, customer reviews and Q&amp;As</p>

#### Properties

Form	Liquid
Storage instructions	Shipped at 4°C. Upon delivery aliquot and store at -20°C. Avoid freeze / thaw cycles.
Storage buffer	pH: 7 Preservative: 0.1% Sodium azide Constituents: 0.021% PBS, 1.764% Sodium citrate, 1.815% Tris
Purity	Immunogen affinity purified
Clonality	Polyclonal
Isotype	IgG

## Applications

### The Abpromise guarantee

Our **Abpromise guarantee** covers the use of ab3853 in the following tested applications.

The application notes include recommended starting dilutions; optimal dilutions/concentrations should be determined by the end user.

Application	Abreviews	Notes
WB	★★★★★ (1)	1/1000 - 1/10000. Predicted molecular weight: 128 kDa.

## Target

### Function

The elongation of primed DNA templates by DNA polymerase delta and epsilon requires the action of the accessory proteins PCNA and activator 1. This subunit binds to the primer-template junction. Binds the PO-B transcription element as well as other GA rich DNA sequences. Could play a role in DNA transcription regulation as well as DNA replication and/or repair. Can bind single- or double-stranded DNA.

Interacts with C-terminus of PCNA. 5' phosphate residue is required for binding of the N-terminal DNA-binding domain to duplex DNA, suggesting a role in recognition of non-primer template DNA structures during replication and/or repair.

### Tissue specificity

Wide tissue distribution. Undetectable in placental tissue.

### Sequence similarities

Belongs to the activator 1 large subunit family.  
Contains 1 BRCT domain.

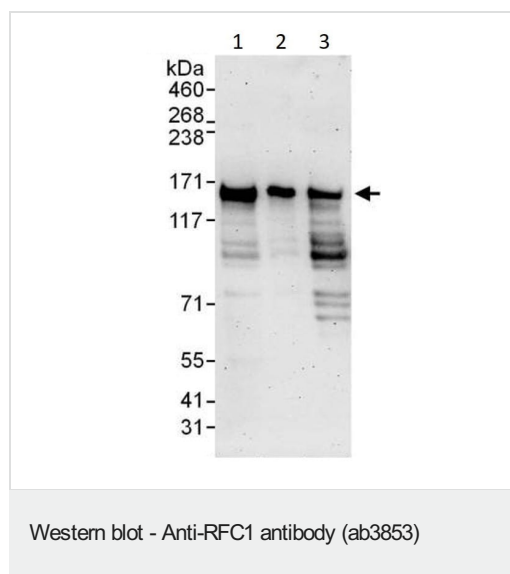
### Post-translational modifications

Phosphorylated upon DNA damage, probably by ATM or ATR.

### Cellular localization

Nucleus.

## Images



**All lanes :** Anti-RFC1 antibody (ab3853) at 0.4 µg/ml

**Lane 1 :** HeLa (Human cervix adenocarcinoma epithelial cell)  
whole cell lysate at 50 µg

**Lane 2 :** HeLa (Human cervix adenocarcinoma epithelial cell)  
whole cell lysate at 15 µg

**Lane 3 :** HEK-293T (Human epithelial cell line from embryonic  
kidney transformed with large T antigen) whole cell lysate at 50 µg

**Predicted band size:** 128 kDa

**Exposure time:** 3 minutes

**Please note:** All products are "FOR RESEARCH USE ONLY. NOT FOR USE IN DIAGNOSTIC PROCEDURES"

### **Our Abpromise to you: Quality guaranteed and expert technical support**

---

- Replacement or refund for products not performing as stated on the datasheet
- Valid for 12 months from date of delivery
- Response to your inquiry within 24 hours
  
- We provide support in Chinese, English, French, German, Japanese and Spanish
- Extensive multi-media technical resources to help you
- We investigate all quality concerns to ensure our products perform to the highest standards

If the product does not perform as described on this datasheet, we will offer a refund or replacement. For full details of the Abpromise, please visit <https://www.abcam.com/abpromise> or contact our technical team.

### **Terms and conditions**

---

- Guarantee only valid for products bought direct from Abcam or one of our authorized distributors