

### Anti-RFX6 antibody ab103497

2 Images

#### Overview

<b>Product name</b>	Anti-RFX6 antibody
<b>Description</b>	Rabbit polyclonal to RFX6
<b>Host species</b>	Rabbit
<b>Tested applications</b>	<b>Suitable for:</b> WB
<b>Species reactivity</b>	<b>Reacts with:</b> Human
<b>Immunogen</b>	<p>Recombinant full length protein within Human RFX6 aa 1-950. The exact immunogen sequence used to generate this antibody is proprietary information. If additional detail on the immunogen is needed to determine the suitability of the antibody for your needs, please <b><u>contact</u></b> our Scientific Support team to discuss your requirements.</p> <p>Database link: <b><u>NP_775831.1</u></b></p>
<b>Positive control</b>	Human kidney lysate and RFX6 transfected 293T cell line lysate
<b>General notes</b>	<p>The Life Science industry has been in the grips of a reproducibility crisis for a number of years. Abcam is leading the way in addressing this with our range of recombinant monoclonal antibodies and knockout edited cell lines for gold-standard validation. Please check that this product meets your needs before purchasing.</p> <p>If you have any questions, special requirements or concerns, please send us an inquiry and/or contact our Support team ahead of purchase. Recommended alternatives for this product can be found below, along with publications, customer reviews and Q&amp;As</p>

#### Properties

<b>Form</b>	Liquid
<b>Storage instructions</b>	Shipped at 4°C. Upon delivery aliquot. Store at -20°C or -80°C. Avoid freeze / thaw cycle.
<b>Storage buffer</b>	<p>pH: 7.40</p> <p>Constituent: 100% PBS</p>
<b>Purity</b>	Protein A purified
<b>Clonality</b>	Polyclonal
<b>Isotype</b>	IgG

#### Applications

## The Abpromise guarantee

Our **Abpromise guarantee** covers the use of ab103497 in the following tested applications.

The application notes include recommended starting dilutions; optimal dilutions/concentrations should be determined by the end user.

Application	Abreviews	Notes
WB		1/500 - 1/1000. Predicted molecular weight: 102 kDa.

## Target

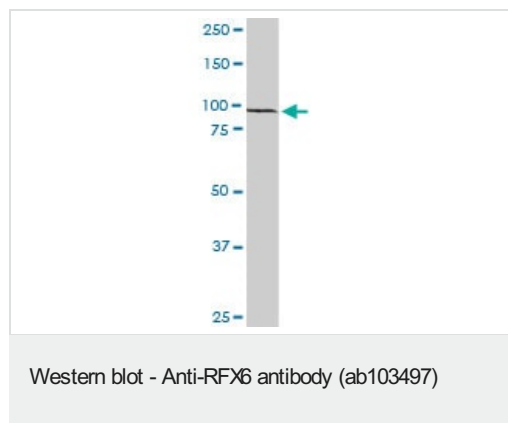
### Relevance

RFX6 belongs to the RFX family, which encodes transcription factors that contain a highly-conserved winged helix DNA binding domain.

### Cellular localization

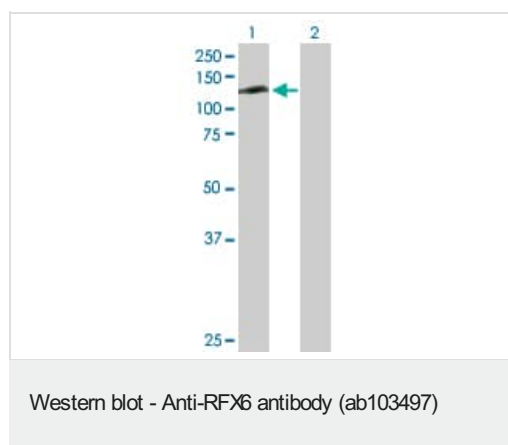
Nucleus

## Images



Anti-RFX6 antibody (ab103497) at 1/500 dilution + Human kidney lysate at 50 µg

**Predicted band size:** 102 kDa



**All lanes :** Anti-RFX6 antibody (ab103497) at 1/500 dilution

**Lane 1 :** RFX6 transfected 293T cell line lysate

**Lane 2 :** Non transfected 293T cell line lysate

Lysates/proteins at 25 µg per lane.

**Predicted band size:** 102 kDa

**Please note:** All products are "FOR RESEARCH USE ONLY. NOT FOR USE IN DIAGNOSTIC PROCEDURES"

## Our Abpromise to you: Quality guaranteed and expert technical support

- Replacement or refund for products not performing as stated on the datasheet
- Valid for 12 months from date of delivery

- Response to your inquiry within 24 hours
- We provide support in Chinese, English, French, German, Japanese and Spanish
- Extensive multi-media technical resources to help you
- We investigate all quality concerns to ensure our products perform to the highest standards

If the product does not perform as described on this datasheet, we will offer a refund or replacement. For full details of the Abpromise, please visit <https://www.abcam.com/abpromise> or contact our technical team.

#### **Terms and conditions**

---

- Guarantee only valid for products bought direct from Abcam or one of our authorized distributors