


Anti-RGR antibody ab188948

1 Image

Overview

Product name	Anti-RGR antibody
Description	Rabbit polyclonal to RGR
Host species	Rabbit
Specificity	BLAST analysis of the peptide immunogen showed no homology with other Human proteins, except SSTR1 (50%).
Tested applications	Suitable for: IHC-P
Species reactivity	Reacts with: Human Predicted to work with: Horse, Cow, Dog, Pig, Monkey, Common marmoset 
Immunogen	Synthetic peptide corresponding to Human RGR (extracellular). (16 amino acid peptide from the 1st extracellular domain). Database link: P47804
Positive control	Human retina tissue.
General notes	<p>The Life Science industry has been in the grips of a reproducibility crisis for a number of years. Abcam is leading the way in addressing this with our range of recombinant monoclonal antibodies and knockout edited cell lines for gold-standard validation. Please check that this product meets your needs before purchasing.</p> <p>If you have any questions, special requirements or concerns, please send us an inquiry and/or contact our Support team ahead of purchase. Recommended alternatives for this product can be found below, along with publications, customer reviews and Q&As</p>

Properties

Form	Liquid
Storage instructions	Shipped at 4°C. Store at +4°C short term (1-2 weeks). Upon delivery aliquot. Store at -20°C long term. Avoid freeze / thaw cycle.
Storage buffer	pH: 7.4 Preservative: 0.1% Sodium azide Constituent: 99% PBS
Purity	Immunogen affinity purified
Clonality	Polyclonal

Isotype

IgG

Applications

The Abpromise guarantee

Our **Abpromise guarantee** covers the use of ab188948 in the following tested applications.

The application notes include recommended starting dilutions; optimal dilutions/concentrations should be determined by the end user.

Application	Abreviews	Notes
IHC-P		Use a concentration of 10 µg/ml. Perform heat mediated antigen retrieval before commencing with IHC staining protocol.

Target

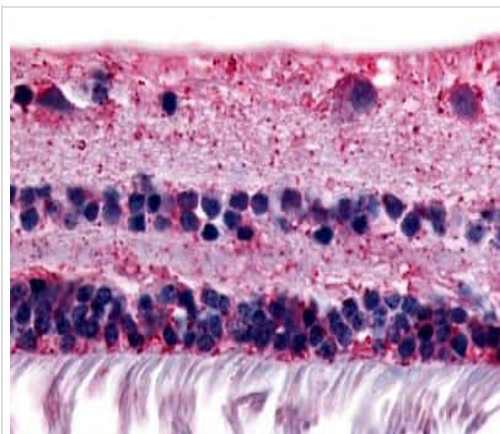
Relevance

RGR is a putative retinal G-protein coupled receptor and is a member of the opsin subfamily of the 7 transmembrane, G-protein coupled receptor 1 family. Like other opsins which bind retinaldehyde, it contains a conserved lysine residue in the seventh transmembrane domain. RGR acts as a photoisomerase to catalyze the conversion of all-trans-retinal to 11-cis-retinal (the reverse isomerization occurs with rhodopsin in retinal photoreceptor cells). RGR is exclusively expressed in tissue adjacent to retinal photoreceptor cells, the retinal pigment epithelium and Mueller cells. This gene may be associated with autosomal recessive and autosomal dominant retinitis pigmentosa (arRP and adRP, respectively). Alternative splicing results in multiple transcript variants encoding different isoforms.

Cellular localization

Cell Membrane; Multi-pass membrane protein

Images



Immunohistochemical analysis of formalin-fixed, paraffin-embedded Human retina tissue labeling RGR with ab188948 at 10 µg/ml.

Immunohistochemistry (Formalin/PFA-fixed paraffin-embedded sections) - Anti-RGR antibody (ab188948)

Please note: All products are "FOR RESEARCH USE ONLY. NOT FOR USE IN DIAGNOSTIC PROCEDURES"

Our Abpromise to you: Quality guaranteed and expert technical support

- Replacement or refund for products not performing as stated on the datasheet
- Valid for 12 months from date of delivery
- Response to your inquiry within 24 hours

- We provide support in Chinese, English, French, German, Japanese and Spanish
- Extensive multi-media technical resources to help you
- We investigate all quality concerns to ensure our products perform to the highest standards

If the product does not perform as described on this datasheet, we will offer a refund or replacement. For full details of the Abpromise, please visit <https://www.abcam.com/abpromise> or contact our technical team.

Terms and conditions

- Guarantee only valid for products bought direct from Abcam or one of our authorized distributors