

Product datasheet

Anti-RGS10 antibody [EPR10657(B)] α b154172

Recombinant RabMAb

7 Images

Overview

Product name	Anti-RGS10 antibody [EPR10657(B)]
Description	Rabbit monoclonal [EPR10657(B)] to RGS10
Host species	Rabbit
Tested applications	Suitable for: WB, IHC-P, ICC/IF Unsuitable for: Flow Cyt
Species reactivity	Reacts with: Human
Immunogen	Synthetic peptide. This information is proprietary to Abcam and/or its suppliers.
Positive control	Jurkat and K562 cell lysates; Human prostate tissue; K562 cells.
General notes	<p>This product is a recombinant monoclonal antibody, which offers several advantages including:</p> <ul style="list-style-type: none"> - High batch-to-batch consistency and reproducibility - Improved sensitivity and specificity - Long-term security of supply - Animal-free production <p>For more information see here.</p> <p>Our RabMAb[®] technology is a patented hybridoma-based technology for making rabbit monoclonal antibodies. For details on our patents, please refer to RabMAb[®] patents.</p> <p>Mouse, Rat: We have preliminary internal testing data to indicate this antibody may not react with these species. Please contact us for more information.</p>

Properties

Form	Liquid
Storage instructions	Shipped at 4°C. Store at -20°C.
Storage buffer	<p>pH: 7.2</p> <p>Preservative: 0.01% Sodium azide</p> <p>Constituents: 9% PBS, 40% Glycerol (glycerin, glycerine), 0.05% BSA, 50% Tissue culture supernatant</p>
Purity	Protein A purified
Clonality	Monoclonal

Clone number EPR10657(B)
Isotype IgG

Applications

The Abpromise guarantee Our **Abpromise guarantee** covers the use of ab154172 in the following tested applications.
The application notes include recommended starting dilutions; optimal dilutions/concentrations should be determined by the end user.

Application	Abreviews	Notes
WB		1/1000 - 1/10000. Predicted molecular weight: 20 kDa.
IHC-P		1/50 - 1/100. Perform heat mediated antigen retrieval before commencing with IHC staining protocol.
ICC/IF		1/50 - 1/100.

Application notes Is unsuitable for Flow Cyt.

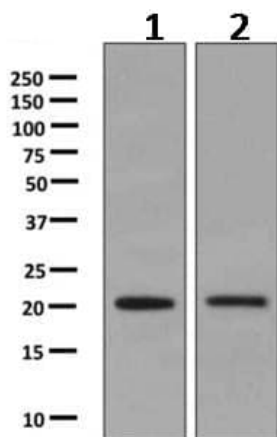
Target

Function Inhibits signal transduction by increasing the GTPase activity of G protein alpha subunits thereby driving them into their inactive GDP-bound form. Associates specifically with the activated forms of the G protein subunits G(i)-alpha and G(z)-alpha but fails to interact with the structurally and functionally distinct G(s)-alpha subunit. Activity on G(z)-alpha is inhibited by palmitoylation of the G-protein.

Sequence similarities Contains 1 RGS domain.

Post-translational modifications Isoform 3 is phosphorylated on Ser-16.

Images



Western blot - Anti-RGS10 antibody [EPR10657(B)] (ab154172)

All lanes : Anti-RGS10 antibody [EPR10657(B)] (ab154172) at 1/1000 dilution

Lane 1 : Jurkat cell lysates

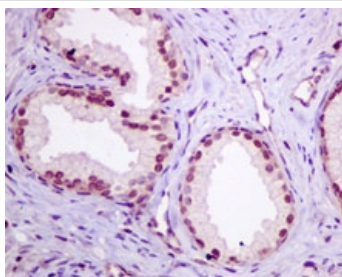
Lane 2 : K562 cell lysates

Lysates/proteins at 10 µg per lane.

Secondary

All lanes : Goat anti-rabbit HRP at 1/2000 dilution

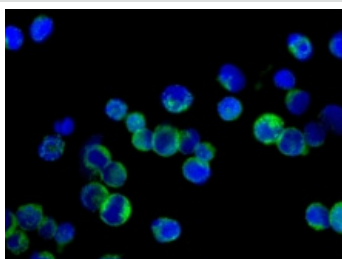
Predicted band size: 20 kDa



Immunohistochemistry (Formalin/PFA-fixed paraffin-embedded sections) - Anti-RGS10 antibody [EPR10657(B)] (ab154172)

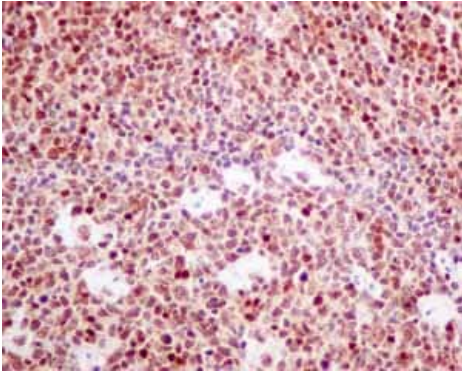
Immunohistochemical analysis of paraffin-embedded Human prostate tissue labeling RGS10 with ab154172 at 1/50 dilution.

Perform heat mediated antigen retrieval before commencing with IHC staining protocol.



Immunocytochemistry/ Immunofluorescence - Anti-RGS10 antibody [EPR10657(B)] (ab154172)

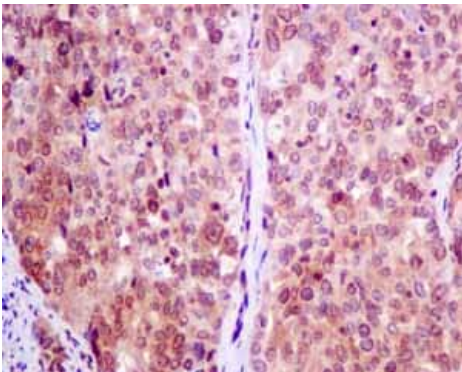
Immunofluorescent analysis of K562 cells labeling RGS10 with ab154172 at 1/50 dilution.



Immunohistochemistry (Formalin/PFA-fixed paraffin-embedded sections) - Anti-RGS10 antibody [EPR10657(B)] (ab154172)

Immunohistochemical analysis of paraffin embedded Human normal tonsil tissue using ab154172 showing +ve staining.

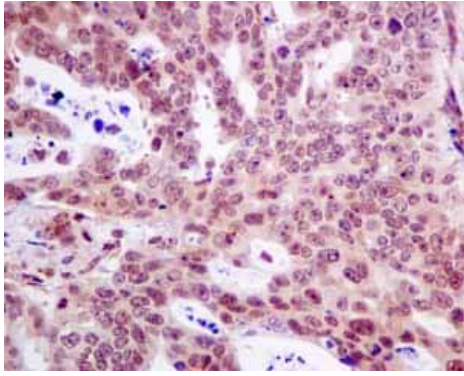
Perform heat mediated antigen retrieval before commencing with IHC staining protocol.



Immunohistochemistry (Formalin/PFA-fixed paraffin-embedded sections) - Anti-RGS10 antibody [EPR10657(B)] (ab154172)

Immunohistochemical analysis of paraffin embedded Human cervical carcinoma tissue using ab154172 showing +ve staining.

Perform heat mediated antigen retrieval before commencing with IHC staining protocol.



Immunohistochemical analysis of paraffin embedded Human gastric adenocarcinoma tissue using ab154172 showing +ve staining.

Perform heat mediated antigen retrieval before commencing with IHC staining protocol.

Immunohistochemistry (Formalin/PFA-fixed paraffin-embedded sections) - Anti-RGS10 antibody [EPR10657(B)] (ab154172)

Why choose a recombinant antibody?



Anti-RGS10 antibody [EPR10657(B)] (ab154172)

Please note: All products are "FOR RESEARCH USE ONLY. NOT FOR USE IN DIAGNOSTIC PROCEDURES"

Our Abpromise to you: Quality guaranteed and expert technical support

- Replacement or refund for products not performing as stated on the datasheet
- Valid for 12 months from date of delivery
- Response to your inquiry within 24 hours
- We provide support in Chinese, English, French, German, Japanese and Spanish
- Extensive multi-media technical resources to help you
- We investigate all quality concerns to ensure our products perform to the highest standards

If the product does not perform as described on this datasheet, we will offer a refund or replacement. For full details of the Abpromise, please visit <https://www.abcam.com/abpromise> or contact our technical team.

Terms and conditions

- Guarantee only valid for products bought direct from Abcam or one of our authorized distributors