


Product datasheet

Anti-RGS7 antibody ab228618

[2 Images](#)

Overview

Product name	Anti-RGS7 antibody
Description	Rabbit polyclonal to RGS7
Host species	Rabbit
Tested applications	Suitable for: ICC/IF, WB
Species reactivity	Reacts with: Human Predicted to work with: Mouse, Rat, Chicken, Cow 
Immunogen	Recombinant fragment within Human RGS7 (internal sequence). The exact sequence is proprietary. Database link: P49802
Positive control	WB: U-87 MG and SK-N-SH whole cell extracts. ICC/IF: NTERA-2 cl.D1 [NT2/D1] cells.
General notes	<p>The Life Science industry has been in the grips of a reproducibility crisis for a number of years. Abcam is leading the way in addressing this with our range of recombinant monoclonal antibodies and knockout edited cell lines for gold-standard validation. Please check that this product meets your needs before purchasing.</p> <p>If you have any questions, special requirements or concerns, please send us an inquiry and/or contact our Support team ahead of purchase. Recommended alternatives for this product can be found below, along with publications, customer reviews and Q&As</p>

Properties

Form	Liquid
Storage instructions	Shipped at 4°C. Store at +4°C short term (1-2 weeks). Upon delivery aliquot. Store at -20°C long term. Avoid freeze / thaw cycle.
Storage buffer	pH: 7.00 Preservative: 0.01% Thimerosal (merthiolate) Constituents: 79.99% PBS, 20% Glycerol (glycerin, glycerine)
Purity	Immunogen affinity purified
Clonality	Polyclonal
Isotype	IgG

Applications

The Abpromise guarantee

Our **Abpromise guarantee** covers the use of ab228618 in the following tested applications.

The application notes include recommended starting dilutions; optimal dilutions/concentrations should be determined by the end user.

Application	Abreviews	Notes
ICC/IF		1/100 - 1/1000.
WB		1/500 - 1/3000. Predicted molecular weight: 58 kDa.

Target

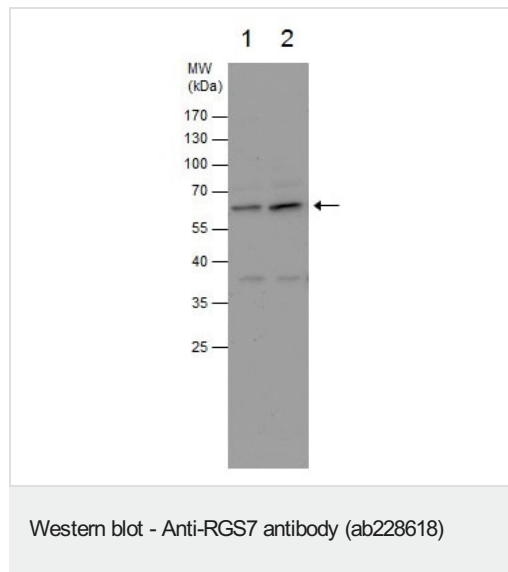
Relevance

RGS7 inhibits signal transduction by increasing the GTPase activity of G protein alpha subunits thereby driving them into their inactive GDP bound form. Activity on G(o) alpha is specifically enhanced by the RGS6/GNG5 dimer. RGS7 may play a role in synaptic vesicle exocytosis and may play an important role in the rapid regulation of neuronal excitability and the cellular responses to short lived stimulations.

Cellular localization

Cytoplasmic

Images



All lanes : Anti-RGS7 antibody (ab228618) at 1/1000 dilution

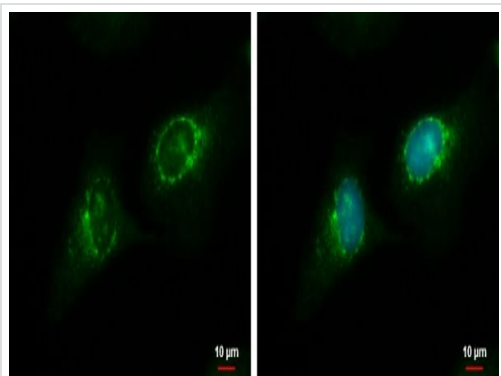
Lane 1 : U-87 MG (human glioblastoma-astrocytoma epithelial cell line) whole cell extract

Lane 2 : SK-N-SH (human neuroblastoma cell line) whole cell extract

Lysates/proteins at 30 µg per lane.

Predicted band size: 58 kDa

10% SDS-PAGE gel.



Immunocytochemistry/ Immunofluorescence - Anti-RGS7 antibody (ab228618)

Ice-cold methanol-fixed NTERA-2 cl.D1 [NT2/D1] (human malignant pluripotent embryonic carcinoma cell line) cells stained for RGS7 (green) using ab228618 at 1/500 dilution in ICC/IF.

Nuclear counter stain: Hoechst 33342 (blue).

Please note: All products are "FOR RESEARCH USE ONLY. NOT FOR USE IN DIAGNOSTIC PROCEDURES"

Our Abpromise to you: Quality guaranteed and expert technical support

- Replacement or refund for products not performing as stated on the datasheet
- Valid for 12 months from date of delivery
- Response to your inquiry within 24 hours
- We provide support in Chinese, English, French, German, Japanese and Spanish
- Extensive multi-media technical resources to help you
- We investigate all quality concerns to ensure our products perform to the highest standards

If the product does not perform as described on this datasheet, we will offer a refund or replacement. For full details of the Abpromise, please visit <https://www.abcam.com/abpromise> or contact our technical team.

Terms and conditions

- Guarantee only valid for products bought direct from Abcam or one of our authorized distributors