


Product datasheet

Anti-RHAG antibody [EPR10011] ab155094

Recombinant RabMAb

[2 References](#) [7 Images](#)

Overview

Product name	Anti-RHAG antibody [EPR10011]
Description	Rabbit monoclonal [EPR10011] to RHAG
Host species	Rabbit
Tested applications	Suitable for: WB, IHC-P Unsuitable for: ICC/IF or IP
Species reactivity	Reacts with: Human Predicted to work with: Mouse, Rat 
Immunogen	Synthetic peptide corresponding to Human RHAG aa 350 to the C-terminus. Database link: Q02094
Positive control	Human fetal kidney, fetal liver and bone marrow lysates; Human lung and spleen tissues.
General notes	This product is a recombinant monoclonal antibody, which offers several advantages including: <ul style="list-style-type: none">- High batch-to-batch consistency and reproducibility- Improved sensitivity and specificity- Long-term security of supply- Animal-free production For more information see here . Our RabMAb [®] technology is a patented hybridoma-based technology for making rabbit monoclonal antibodies. For details on our patents, please refer to RabMAb[®] patents .

Properties

Form	Liquid
Storage instructions	Shipped at 4°C. Store at -20°C.
Storage buffer	pH: 7.2 Preservative: 0.01% Sodium azide Constituents: 9% PBS, 40% Glycerol (glycerin, glycerine), 0.05% BSA, 50% Tissue culture supernatant
Purity	Protein A purified
Clonality	Monoclonal

Clone number EPR10011

Isotype IgG

Applications

The Abpromise guarantee Our **Abpromise guarantee** covers the use of ab155094 in the following tested applications.

The application notes include recommended starting dilutions; optimal dilutions/concentrations should be determined by the end user.

Application	Abreviews	Notes
WB		1/1000 - 1/10000. Predicted molecular weight: 44 kDa.
IHC-P		1/250 - 1/500. Perform heat mediated antigen retrieval before commencing with IHC staining protocol.

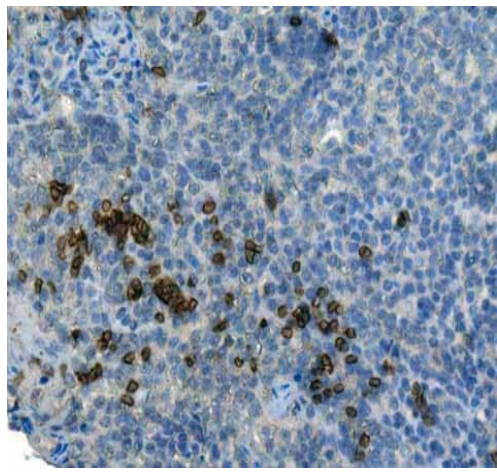
Application notes Is unsuitable for ICC/IF or IP.

Target

Relevance RHAG (Rhesus blood group-associated glycoprotein) is associated with rhesus blood group antigen expression. It may be part of an oligomeric complex which is likely to have a transport or channel function in the erythrocyte membrane. The Rh blood group antigens are associated with human erythrocyte membrane proteins of approximately 30 kD, the so-called Rh30 polypeptides. Heterogeneously glycosylated membrane proteins of 50 and 45 kD, the Rh50 glycoproteins, are coprecipitated with the Rh30 polypeptides on immunoprecipitation with anti-Rh-specific mono- and polyclonal antibodies. The Rh antigens appear to exist as a multisubunit complex of CD47, LW, glycophorin B and play a critical role in the Rh50 glycoprotein.

Cellular localization Cell Membrane; multi-pass membrane protein

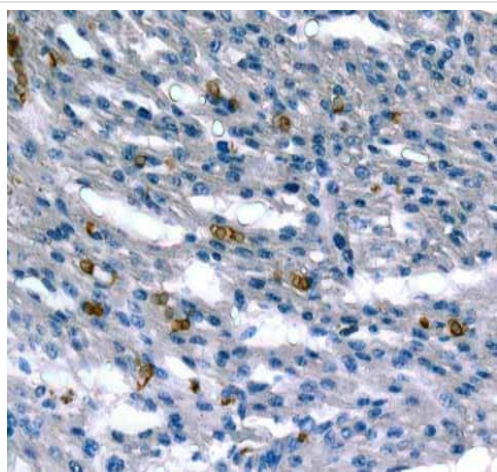
Images



Immunohistochemistry (Formalin/PFA-fixed paraffin-embedded sections) - Anti-RHAG antibody
[EPR10011] (ab155094)

ab155094 showing +ve staining in Human normal tonsil.

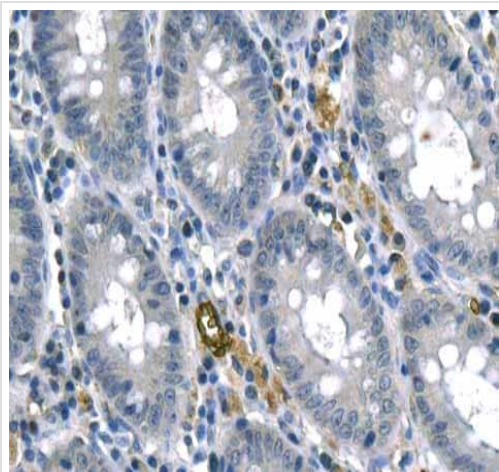
Perform heat mediated antigen retrieval before commencing with IHC staining protocol.



Immunohistochemistry (Formalin/PFA-fixed paraffin-embedded sections) - Anti-RHAG antibody
[EPR10011] (ab155094)

ab155094 showing +ve staining in Human normal heart.

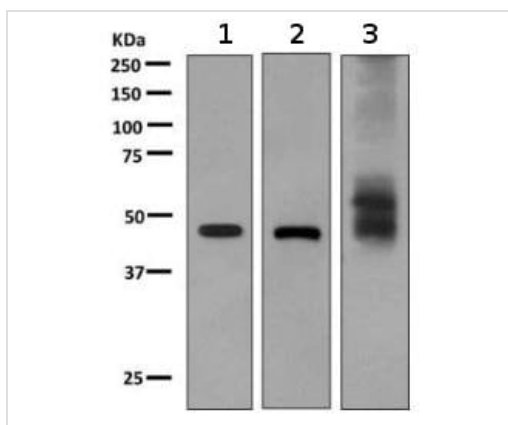
Perform heat mediated antigen retrieval before commencing with IHC staining protocol.



Immunohistochemistry (Formalin/PFA-fixed paraffin-embedded sections) - Anti-RHAG antibody [EPR10011] (ab155094)

ab155094 showing +ve staining in Human normal colon.

Perform heat mediated antigen retrieval before commencing with IHC staining protocol.



Western blot - Anti-RHAG antibody [EPR10011] (ab155094)

All lanes : Anti-RHAG antibody [EPR10011] (ab155094) at 1/1000 dilution

Lane 1 : Human fetal kidney cell lysate

Lane 2 : Human fetal liver cell lysate

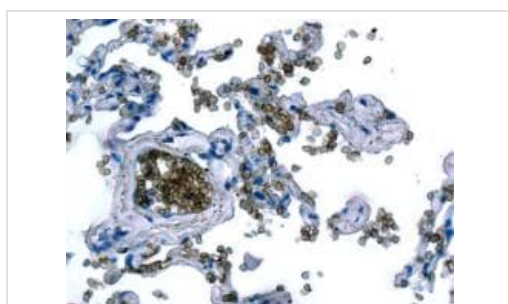
Lane 3 : Human bone marrow cell lysate

Lysates/proteins at 10 µg per lane.

Secondary

All lanes : Goat anti-rabbit HRP at 1/2000 dilution

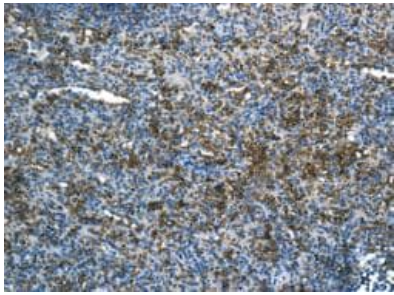
Predicted band size: 44 kDa



Immunohistochemistry (Formalin/PFA-fixed paraffin-embedded sections) - Anti-RHAG antibody [EPR10011] (ab155094)

Immunohistochemical analysis of paraffin-embedded Human lung tissue labeling RHAG with ab155094 at 1/250 dilution.

Perform heat mediated antigen retrieval before commencing with IHC staining protocol.



Immunohistochemical analysis of paraffin-embedded Human spleen tissue labeling RHAG with ab155094 at 1/250 dilution.

Perform heat mediated antigen retrieval before commencing with IHC staining protocol.

Immunohistochemistry (Formalin/PFA-fixed paraffin-embedded sections) - Anti-RHAG antibody [EPR10011] (ab155094)

Why choose a recombinant antibody?



Research with confidence
Consistent and reproducible results



Long-term and scalable supply
Recombinant technology



Success from the first experiment
Confirmed specificity



Ethical standards compliant
Animal-free production

Anti-RHAG antibody [EPR10011] (ab155094)

Please note: All products are "FOR RESEARCH USE ONLY. NOT FOR USE IN DIAGNOSTIC PROCEDURES"

Our Abpromise to you: Quality guaranteed and expert technical support

- Replacement or refund for products not performing as stated on the datasheet
- Valid for 12 months from date of delivery
- Response to your inquiry within 24 hours
- We provide support in Chinese, English, French, German, Japanese and Spanish
- Extensive multi-media technical resources to help you
- We investigate all quality concerns to ensure our products perform to the highest standards

If the product does not perform as described on this datasheet, we will offer a refund or replacement. For full details of the Abpromise, please visit <https://www.abcam.com/abpromise> or contact our technical team.

Terms and conditions

- Guarantee only valid for products bought direct from Abcam or one of our authorized distributors