

Product datasheet

Anti-RHBDD2 antibody ab106403

★★★★★ [1 Abreviews](#) [2 Images](#)

Overview

Product name	Anti-RHBDD2 antibody
Description	Rabbit polyclonal to RHBDD2
Host species	Rabbit
Specificity	ab106403 is specific for RHBDD2 and will not cross-react with other RHBDD family members. At least four isoforms are known to exist.
Tested applications	Suitable for: WB, ICC/IF
Species reactivity	Reacts with: Rat
Immunogen	An 18 amino acid synthetic peptide from near the center of Human RHBDD2 (NP_001035546).
Positive control	Rat lung tissue lysate
General notes	<p>The Life Science industry has been in the grips of a reproducibility crisis for a number of years. Abcam is leading the way in addressing this with our range of recombinant monoclonal antibodies and knockout edited cell lines for gold-standard validation. Please check that this product meets your needs before purchasing.</p> <p>If you have any questions, special requirements or concerns, please send us an inquiry and/or contact our Support team ahead of purchase. Recommended alternatives for this product can be found below, along with publications, customer reviews and Q&As</p>

Properties

Form	Liquid
Storage instructions	Shipped at 4°C. Store at +4°C.
Storage buffer	<p>pH: 7.2</p> <p>Preservative: 0.02% Sodium azide</p> <p>Constituent: PBS</p>
Purity	Immunogen affinity purified
Clonality	Polyclonal
Isotype	IgG

Applications

The Abpromise guarantee

Our **Abpromise guarantee** covers the use of ab106403 in the following tested applications.

The application notes include recommended starting dilutions; optimal dilutions/concentrations should be determined by the end user.

Application	Abreviews	Notes
WB		Use a concentration of 1 - 2 µg/ml. Predicted molecular weight: 39 kDa.
ICC/IF	★★★★★ (1)	Use at an assay dependent concentration.

Target

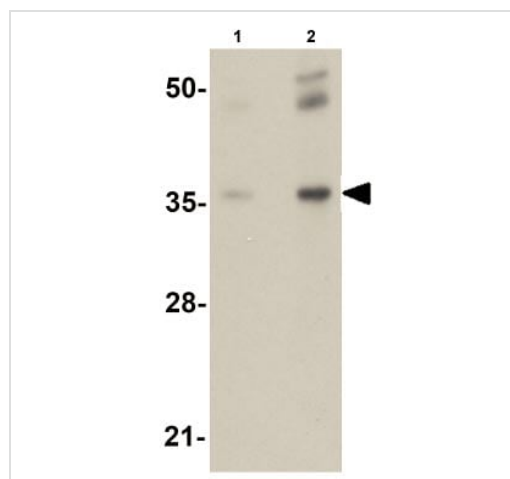
Sequence similarities

Belongs to the peptidase S54 family.

Cellular localization

Membrane.

Images



Western blot - Anti-RHBDD2 antibody (ab106403)

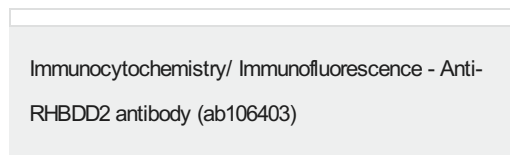
Lane 1 : Anti-RHBDD2 antibody (ab106403) at 1 µg/ml

Lane 2 : Anti-RHBDD2 antibody (ab106403) at 2 µg/ml

All lanes : Rat lung tissue lysate

Lysates/proteins at 15 µg per lane.

Predicted band size: 39 kDa



Immunofluorescence of RHBDD2 in Rat Lung cells using ab106403 at 20 µg/ml.

Please note: All products are "FOR RESEARCH USE ONLY. NOT FOR USE IN DIAGNOSTIC PROCEDURES"

Our Abpromise to you: Quality guaranteed and expert technical support

- Replacement or refund for products not performing as stated on the datasheet
- Valid for 12 months from date of delivery
- Response to your inquiry within 24 hours

- We provide support in Chinese, English, French, German, Japanese and Spanish
- Extensive multi-media technical resources to help you
- We investigate all quality concerns to ensure our products perform to the highest standards

If the product does not perform as described on this datasheet, we will offer a refund or replacement. For full details of the Abpromise, please visit <https://www.abcam.com/abpromise> or contact our technical team.

Terms and conditions

- Guarantee only valid for products bought direct from Abcam or one of our authorized distributors