

Product datasheet

Anti-RhD antibody [D7C2] ab281912

Recombinant

1 Image

Overview

Product name	Anti-RhD antibody [D7C2]
Description	Human monoclonal [D7C2] to RhD
Host species	Human
Tested applications	Suitable for: ICC/IF
Species reactivity	Reacts with: Human
Immunogen	Tissue, cells or virus corresponding to Human RhD. Rh- volunteer blood donor (r/r) was injected with 5ml of Rh+ erythrocytes (R1/r). Isolated peripheral lymphocytes were transformed with 1 ml of culture supernatant of the EBV marmoset B96-8 cell line. Database link: Q02161
Positive control	ICC/IF: K562 cells.
General notes	ab281912 is the recombinant human IgM version of ab281911 .

Properties

Form	Liquid
Storage instructions	Shipped at 4°C. Store at +4°C short term (1-2 weeks). Upon delivery aliquot. Store at -20°C. Avoid freeze / thaw cycle.
Storage buffer	Preservative: 0.02% Proclin 300 Constituent: 99% PBS
Purity	Protein A purified
Clonality	Monoclonal
Clone number	D7C2
Isotype	IgM
Light chain type	lambda

Applications

The **Abpromise guarantee** Our [Abpromise guarantee](#) covers the use of ab281912 in the following tested applications.

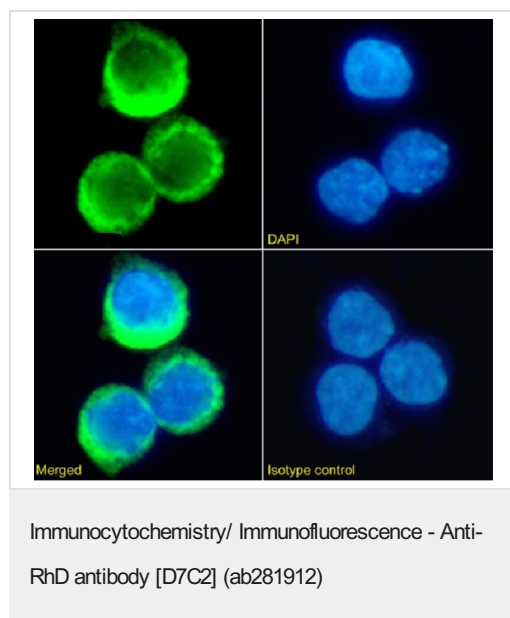
The application notes include recommended starting dilutions; optimal dilutions/concentrations should be determined by the end user.

Application	Abreviews	Notes
ICC/IF		Use a concentration of 10 µg/ml.

Target

Function	May be part of an oligomeric complex which is likely to have a transport or channel function in the erythrocyte membrane.
Tissue specificity	Restricted to tissues or cell lines expressing erythroid characters.
Sequence similarities	Belongs to the ammonium transporter (TC 2.A.49) family. Rh subfamily.
Cellular localization	Membrane.

Images



This data was developed using the chimeric version (**ab281911**).

Immunofluorescence analysis of paraformaldehyde fixed K-562 (Human chronic myelogenous leukemia lymphoblast cell line) cells labelling RhD with **ab281911** at 10 µg/ml for 1 hour, followed by Alexa Fluor[®] 488 secondary antibody at 2 µg/ml (green/top-left). Image showing membrane staining. The nuclear counter stain is DAPI (blue). The isotype control was an unknown specificity antibody followed by staining with Alexa Fluor[®] 488 secondary antibody. K562 cells were immobilized on Shi-fix[™] coverslips.

Please note: All products are "FOR RESEARCH USE ONLY. NOT FOR USE IN DIAGNOSTIC PROCEDURES"

Our Abpromise to you: Quality guaranteed and expert technical support

- Replacement or refund for products not performing as stated on the datasheet
- Valid for 12 months from date of delivery
- Response to your inquiry within 24 hours
- We provide support in Chinese, English, French, German, Japanese and Spanish
- Extensive multi-media technical resources to help you
- We investigate all quality concerns to ensure our products perform to the highest standards

If the product does not perform as described on this datasheet, we will offer a refund or replacement. For full details of the Abpromise,

please visit <https://www.abcam.com/abpromise> or contact our technical team.

Terms and conditions

- Guarantee only valid for products bought direct from Abcam or one of our authorized distributors