

## Product datasheet

# Anti-RhD antibody [D7C2] - Rabbit IgG (Chimeric) ab281911

Recombinant

1 Image

### Overview

---

<b>Product name</b>	Anti-RhD antibody [D7C2] - Rabbit IgG (Chimeric)
<b>Description</b>	Rabbit monoclonal [D7C2] to RhD - Chimeric
<b>Host species</b>	Rabbit
<b>Tested applications</b>	<b>Suitable for:</b> ICC/IF
<b>Species reactivity</b>	<b>Reacts with:</b> Human
<b>Immunogen</b>	Tissue, cells or virus corresponding to Human RhD. Rh- volunteer blood donor (r/r) was injected with 5ml of Rh+ erythrocytes (R1/r). Isolated peripheral lymphocytes were transformed with 1 ml of culture supernatant of the EBV marmoset B96-8 cell line. Database link: <a href="#">Q02161</a>
<b>Positive control</b>	ICC/IF: K562 cells.
<b>General notes</b>	ab281911 is the chimeric rabbit version of <a href="#">ab281912</a> .  This rabbit monoclonal chimeric antibody was made using the variable domain sequences of the original Human IgM format, for improved compatibility with existing reagents, assays and techniques.  This product is a recombinant monoclonal antibody, which offers several advantages including: - High batch-to-batch consistency and reproducibility - Improved sensitivity and specificity - Long-term security of supply - Animal-free production For more information <a href="#">see here</a> .

### Properties

---

<b>Form</b>	Liquid
<b>Storage instructions</b>	Shipped at 4°C. Store at +4°C short term (1-2 weeks). Upon delivery aliquot. Store at -20°C. Avoid freeze / thaw cycle.
<b>Storage buffer</b>	Preservative: 0.02% Proclin 300 Constituent: 99% PBS

<b>Purity</b>	Protein A purified
<b>Clonality</b>	Monoclonal
<b>Clone number</b>	D7C2
<b>Isotype</b>	IgG
<b>Light chain type</b>	lambda

## Applications

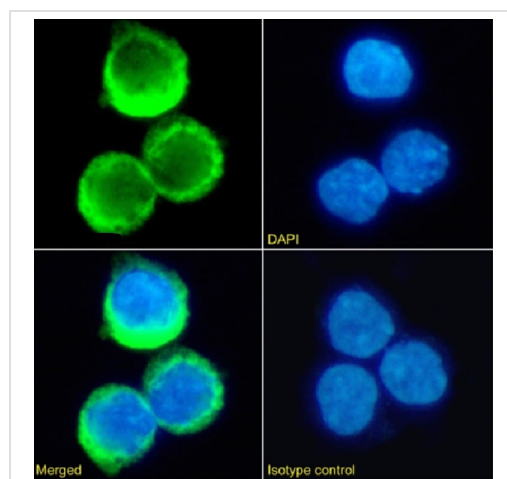
**The Abpromise guarantee** Our **Abpromise guarantee** covers the use of ab281911 in the following tested applications. The application notes include recommended starting dilutions; optimal dilutions/concentrations should be determined by the end user.

Application	Abreviews	Notes
ICC/IF		Use a concentration of 10 µg/ml.

## Target

<b>Function</b>	May be part of an oligomeric complex which is likely to have a transport or channel function in the erythrocyte membrane.
<b>Tissue specificity</b>	Restricted to tissues or cell lines expressing erythroid characters.
<b>Sequence similarities</b>	Belongs to the ammonium transporter (TC 2.A.49) family. Rh subfamily.
<b>Cellular localization</b>	Membrane.

## Images



Immunofluorescence analysis of paraformaldehyde fixed K-562 (Human chronic myelogenous leukemia lymphoblast cell line ) cells labelling RhD with ab281911 at 10 µg/ml for 1 hour, followed by Alexa Fluor® 488 secondary antibody at 2 µg/ml (green/top-left). Image showing membrane staining. The nuclear counter stain is DAPI (blue). The isotype control was an unknown specificity antibody followed by staining with Alexa Fluor® 488 secondary antibody. K562 cells were immobilized on Shi-fix™ coverslips.

Immunocytochemistry/ Immunofluorescence - Anti-RhD antibody [D7C2] - Rabbit IgG (Chimeric) (ab281911)

**Please note:** All products are "FOR RESEARCH USE ONLY. NOT FOR USE IN DIAGNOSTIC PROCEDURES"

## **Our Abpromise to you: Quality guaranteed and expert technical support**

---

- Replacement or refund for products not performing as stated on the datasheet
- Valid for 12 months from date of delivery
- Response to your inquiry within 24 hours
  
- We provide support in Chinese, English, French, German, Japanese and Spanish
- Extensive multi-media technical resources to help you
- We investigate all quality concerns to ensure our products perform to the highest standards

If the product does not perform as described on this datasheet, we will offer a refund or replacement. For full details of the Abpromise, please visit <https://www.abcam.com/abpromise> or contact our technical team.

## **Terms and conditions**

---

- Guarantee only valid for products bought direct from Abcam or one of our authorized distributors