

## Product datasheet

# Anti-RHOB antibody ab155149

[3 References](#) [4 Images](#)

### Overview

---

<b>Product name</b>	Anti-RHOB antibody
<b>Description</b>	Rabbit polyclonal to RHOB
<b>Host species</b>	Rabbit
<b>Tested applications</b>	<b>Suitable for:</b> WB, IHC-P
<b>Species reactivity</b>	<b>Reacts with:</b> Mouse, Rat, Human
<b>Immunogen</b>	Recombinant fragment, corresponding to a region within amino acids 1-146 of Human RHOB (UniProt P62745).
<b>Positive control</b>	WB: U-87 MG cell lysate; mouse and rat brain tissue extract. IHC-P: Human U87 xenograft tissue.
<b>General notes</b>	<p>The Life Science industry has been in the grips of a reproducibility crisis for a number of years. Abcam is leading the way in addressing this with our range of recombinant monoclonal antibodies and knockout edited cell lines for gold-standard validation. Please check that this product meets your needs before purchasing.</p> <p>If you have any questions, special requirements or concerns, please send us an inquiry and/or contact our Support team ahead of purchase. Recommended alternatives for this product can be found below, along with publications, customer reviews and Q&amp;As</p>

### Properties

---

<b>Form</b>	Liquid
<b>Storage instructions</b>	Shipped at 4°C. Store at +4°C short term (1-2 weeks). Upon delivery aliquot. Store at -20°C or -80°C. Avoid freeze / thaw cycle.
<b>Storage buffer</b>	pH: 7.00 Preservative: 0.01% Thimerosal (merthiolate) Constituents: 1.21% Tris, 0.75% Glycine, 10% Glycerol (glycerin, glycerine)
<b>Purity</b>	Immunogen affinity purified
<b>Clonality</b>	Polyclonal
<b>Isotype</b>	IgG

### Applications

---

## The Abpromise guarantee

Our **Abpromise guarantee** covers the use of ab155149 in the following tested applications.

The application notes include recommended starting dilutions; optimal dilutions/concentrations should be determined by the end user.

Application	Abreviews	Notes
WB		1/500 - 1/3000. Predicted molecular weight: 22 kDa.
IHC-P		1/100 - 1/1000.

## Target

### Function

Mediates apoptosis in neoplastically transformed cells after DNA damage. Not essential for development but affects cell adhesion and growth factor signaling in transformed cells. Plays a negative role in tumorigenesis as deletion causes tumor formation. Involved in intracellular protein trafficking of a number of proteins. Targets PKN1 to endosomes and is involved in trafficking of the EGF receptor from late endosomes to lysosomes. Also required for stability and nuclear trafficking of AKT1/AKT which promotes endothelial cell survival during vascular development.

### Sequence similarities

Belongs to the small GTPase superfamily. Rho family.

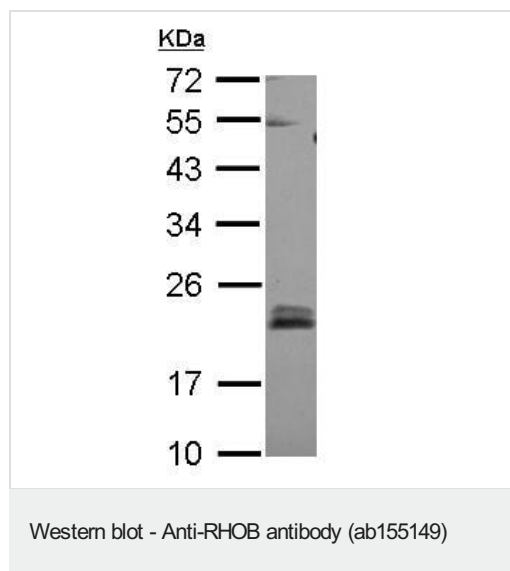
### Post-translational modifications

Prenylation specifies the subcellular location of RHOB. The farnesylated form is localized to the plasma membrane while the geranylgeranylated form is localized to the endosome.

### Cellular localization

Late endosome membrane. Cell membrane. Nucleus. Late endosomal membrane (geranylgeranylated form). Plasma membrane (farnesylated form). Also detected at the nuclear margin and in the nucleus.

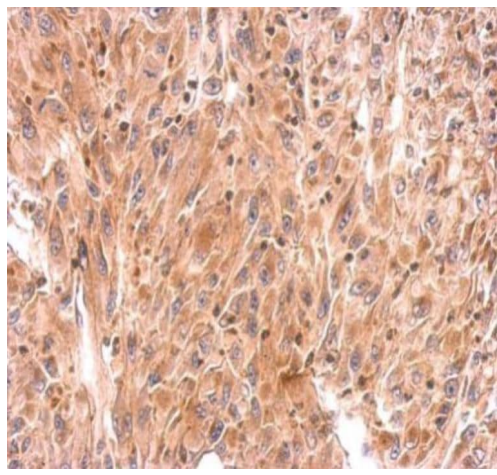
## Images



Anti-RHOB antibody (ab155149) at 1/500 dilution + U-87 MG (human glioblastoma-astrocytoma epithelial cell line) whole cell lysate at 30 µg

**Predicted band size:** 22 kDa

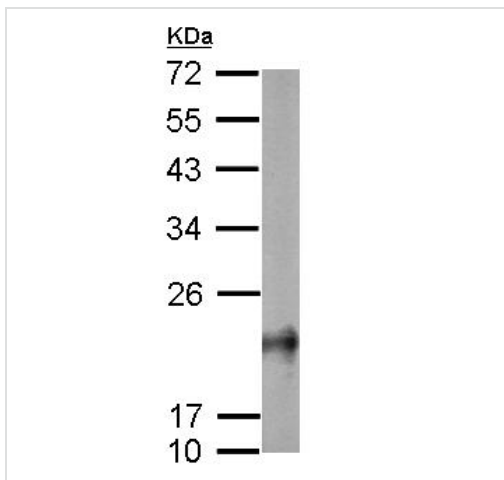
12% SDS PAGE



Immunohistochemistry (Formalin/PFA-fixed paraffin-embedded sections) - Anti-RHOB antibody (ab155149)

Immunohistochemical analysis of paraffin-embedded U87 xenograft tissue staining RHOB protein at cytosol with ab155149 at 1/500 dilution.

Antigen Retrieval: EDTA based buffer, pH 8.0, 15min.

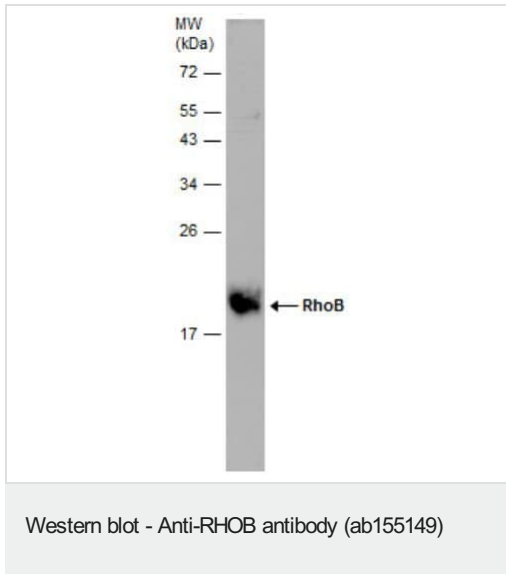


Western blot - Anti-RHOB antibody (ab155149)

Anti-RHOB antibody (ab155149) at 1/1000 dilution + Mouse brain tissue extract at 50  $\mu$ g

**Predicted band size: 22 kDa**

12% SDS PAGE



Anti-RHOB antibody (ab155149) at 1/1000 dilution + Rat brain tissue extract at 50 µg

**Predicted band size:** 22 kDa

12% SDS-PAGE

**Please note:** All products are "FOR RESEARCH USE ONLY. NOT FOR USE IN DIAGNOSTIC PROCEDURES"

### Our Abpromise to you: Quality guaranteed and expert technical support

---

- Replacement or refund for products not performing as stated on the datasheet
- Valid for 12 months from date of delivery
- Response to your inquiry within 24 hours
- We provide support in Chinese, English, French, German, Japanese and Spanish
- Extensive multi-media technical resources to help you
- We investigate all quality concerns to ensure our products perform to the highest standards

If the product does not perform as described on this datasheet, we will offer a refund or replacement. For full details of the Abpromise, please visit <https://www.abcam.com/abpromise> or contact our technical team.

### Terms and conditions

---

- Guarantee only valid for products bought direct from Abcam or one of our authorized distributors