

Product datasheet

Anti-Rhodopsin antibody [EPR7996] αb155097

Recombinant RabMAb

7 Images

Overview

Product name	Anti-Rhodopsin antibody [EPR7996]
Description	Rabbit monoclonal [EPR7996] to Rhodopsin
Host species	Rabbit
Tested applications	Suitable for: WB, IHC-P Unsuitable for: ICC/IF or IP
Species reactivity	Reacts with: Rat, Human
Immunogen	Synthetic peptide within Human Rhodopsin aa 300-400. The exact sequence is proprietary.
Positive control	Rat eyeball lysate; Human retina tissue.
General notes	<p>This product is a recombinant monoclonal antibody, which offers several advantages including:</p> <ul style="list-style-type: none"> - High batch-to-batch consistency and reproducibility - Improved sensitivity and specificity - Long-term security of supply - Animal-free production <p>For more information see here.</p> <p>Our RabMAb[®] technology is a patented hybridoma-based technology for making rabbit monoclonal antibodies. For details on our patents, please refer to RabMAb[®] patents.</p> <p>Mouse: We have preliminary internal testing data to indicate this antibody may not react with this species. Please contact us for more information.</p>

Properties

Form	Liquid
Storage instructions	Shipped at 4°C. Store at -20°C.
Storage buffer	<p>pH: 7.2</p> <p>Preservative: 0.01% Sodium azide</p> <p>Constituents: 59% PBS, 40% Glycerol (glycerin, glycerine), 0.5% BSA</p>
Purity	Protein A purified
Clonality	Monoclonal
Clone number	EPR7996

Isotype

IgG

Applications

The Abpromise guarantee Our **Abpromise guarantee** covers the use of ab155097 in the following tested applications. The application notes include recommended starting dilutions; optimal dilutions/concentrations should be determined by the end user.

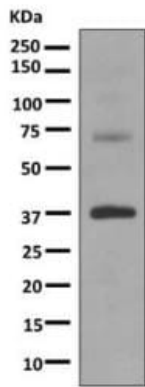
Application	Abreviews	Notes
WB		1/1000 - 1/10000. Predicted molecular weight: 39 kDa.
IHC-P		1/50 - 1/1000. Perform heat mediated antigen retrieval before commencing with IHC staining protocol.

Application notes Is unsuitable for ICC/IF or IP.

Target

Function	Photoreceptor required for image-forming vision at low light intensity. Required for photoreceptor cell viability after birth. Light-induced isomerization of 11-cis to all-trans retinal triggers a conformational change leading to G-protein activation and release of all-trans retinal.
Tissue specificity	Rod shaped photoreceptor cells which mediates vision in dim light.
Involvement in disease	Retinitis pigmentosa 4 Night blindness, congenital stationary, autosomal dominant 1
Sequence similarities	Belongs to the G-protein coupled receptor 1 family. Opsin subfamily.
Post-translational modifications	Phosphorylated on some or all of the serine and threonine residues present in the C-terminal region. Contains one covalently linked retinal chromophore.
Cellular localization	Membrane. Synthesized in the inner segment (IS) of rod photoreceptor cells before vectorial transport to the rod outer segment (OS) photosensory cilia.

Images



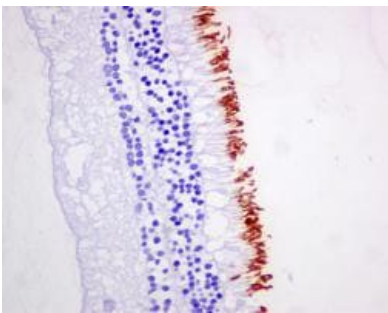
Western blot - Anti-Rhodopsin antibody [EPR7996]
(ab155097)

Anti-Rhodopsin antibody [EPR7996] (ab155097) at 1/1000 dilution
+ Rat eyeball lysate at 10 µg

Secondary

Goat anti-rabbit HRP at 1/2000 dilution

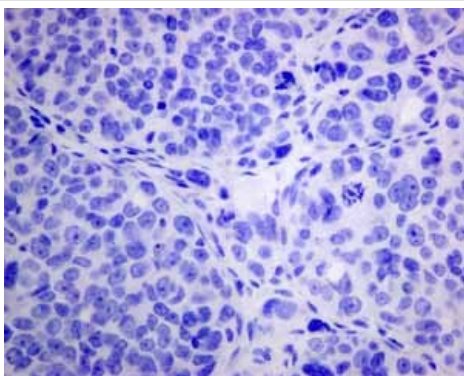
Predicted band size: 39 kDa



Immunohistochemistry (Formalin/PFA-fixed paraffin-
embedded sections) - Anti-Rhodopsin antibody
[EPR7996] (ab155097)

Immunohistochemical analysis of paraffin-embedded Human retina
tissue labeling Rhodopsin with ab155097 at 1/50 dilution.

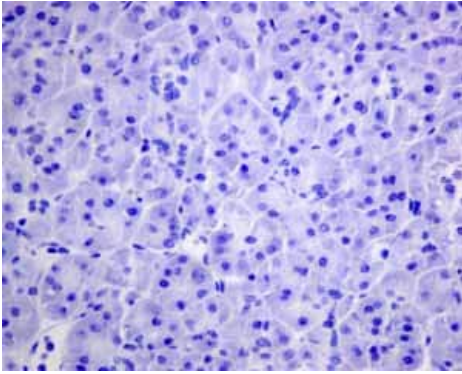
Perform heat mediated antigen retrieval before commencing with
IHC staining protocol.



Immunohistochemistry (Formalin/PFA-fixed paraffin-
embedded sections) - Anti-Rhodopsin antibody
[EPR7996] (ab155097)

Immunohistochemical analysis of paraffin embedded Human
ovarian carcinoma tissue using ab155097 showing -ve staining.

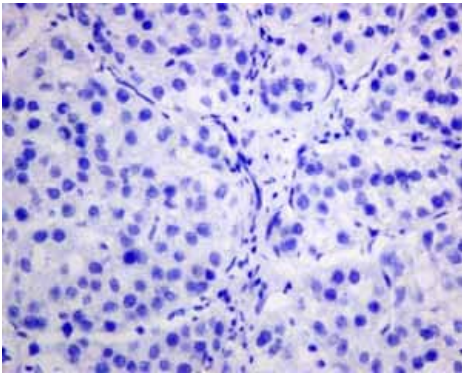
Perform heat mediated antigen retrieval before commencing with
IHC staining protocol.



Immunohistochemistry (Formalin/PFA-fixed paraffin-embedded sections) - Anti-Rhodopsin antibody [EPR7996] (ab155097)

Immunohistochemical analysis of paraffin embedded Human normal pancreas tissue using ab155097 showing -ve staining.

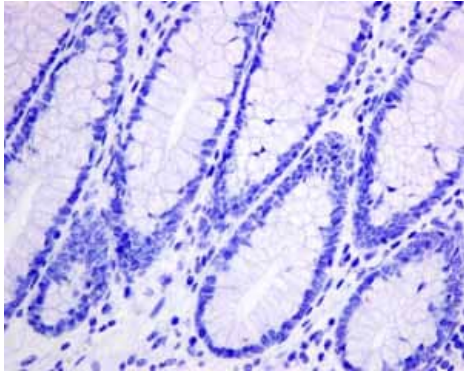
Perform heat mediated antigen retrieval before commencing with IHC staining protocol.



Immunohistochemistry (Formalin/PFA-fixed paraffin-embedded sections) - Anti-Rhodopsin antibody [EPR7996] (ab155097)

Immunohistochemical analysis of paraffin embedded Human hepatocellular carcinoma tissue using ab155097 showing -ve staining.

Perform heat mediated antigen retrieval before commencing with IHC staining protocol.



Immunohistochemical analysis of paraffin embedded Human normal colon tissue using ab155097 showing -ve staining.

Perform heat mediated antigen retrieval before commencing with IHC staining protocol.

Immunohistochemistry (Formalin/PFA-fixed paraffin-embedded sections) - Anti-Rhodopsin antibody [EPR7996] (ab155097)

Why choose a recombinant antibody?



Anti-Rhodopsin antibody [EPR7996] (ab155097)

Please note: All products are "FOR RESEARCH USE ONLY. NOT FOR USE IN DIAGNOSTIC PROCEDURES"

Our Abpromise to you: Quality guaranteed and expert technical support

- Replacement or refund for products not performing as stated on the datasheet
- Valid for 12 months from date of delivery
- Response to your inquiry within 24 hours
- We provide support in Chinese, English, French, German, Japanese and Spanish
- Extensive multi-media technical resources to help you
- We investigate all quality concerns to ensure our products perform to the highest standards

If the product does not perform as described on this datasheet, we will offer a refund or replacement. For full details of the Abpromise, please visit <https://www.abcam.com/abpromise> or contact our technical team.

Terms and conditions

- Guarantee only valid for products bought direct from Abcam or one of our authorized distributors