


## Product datasheet

### Anti-RhoGDI antibody [EPR3773] ab133248

KO **VALIDATED** Recombinant RabMAb

★★★★★ [1 Abreviews](#) [7 References](#) [6 Images](#)

#### Overview

Product name	Anti-RhoGDI antibody [EPR3773]
Description	Rabbit monoclonal [EPR3773] to RhoGDI
Host species	Rabbit
Tested applications	<b>Suitable for:</b> WB, IHC-P <b>Unsuitable for:</b> Flow Cyt or IP
Species reactivity	<b>Reacts with:</b> Mouse, Human <b>Predicted to work with:</b> Rat 
Immunogen	Synthetic peptide. This information is proprietary to Abcam and/or its suppliers.
Positive control	WB: HEK293T, Jurkat, HeLa and NIH3T3 cell lysates. IHC-P: Human breast carcinoma tissue.
General notes	<p>This product is a recombinant monoclonal antibody, which offers several advantages including:</p> <ul style="list-style-type: none"> <li>- High batch-to-batch consistency and reproducibility</li> <li>- Improved sensitivity and specificity</li> <li>- Long-term security of supply</li> <li>- Animal-free production</li> </ul> <p>For more information <a href="#">see here</a>.</p> <p>Our RabMAb<sup>®</sup> technology is a patented hybridoma-based technology for making rabbit monoclonal antibodies. For details on our patents, please refer to <a href="#">RabMAb<sup>®</sup> patents</a>.</p>

#### Properties

Form	Liquid
Storage instructions	Shipped at 4°C. Store at -20°C. Stable for 12 months at -20°C.
Storage buffer	pH: 7.2 Preservative: 0.05% Sodium azide Constituents: 0.1% BSA, 40% Glycerol (glycerin, glycerine), 9.85% Tris glycine, 50% Tissue culture supernatant
Purity	Protein A purified
Clonality	Monoclonal
Clone number	EPR3773

Isotype

IgG

## Applications

### The Abpromise guarantee

Our **Abpromise guarantee** covers the use of ab133248 in the following tested applications.

The application notes include recommended starting dilutions; optimal dilutions/concentrations should be determined by the end user.

Application	Abreviews	Notes
WB	★★★★★ (1)	1/1000 - 1/10000. Predicted molecular weight: 23 kDa.
IHC-P		1/100 - 1/250. Perform heat mediated antigen retrieval with citrate buffer pH 6 before commencing with IHC staining protocol.

### Application notes

Is unsuitable for Flow Cyt or IP.

## Target

### Function

Regulates the GDP/GTP exchange reaction of the Rho proteins by inhibiting the dissociation of GDP from them, and the subsequent binding of GTP to them.

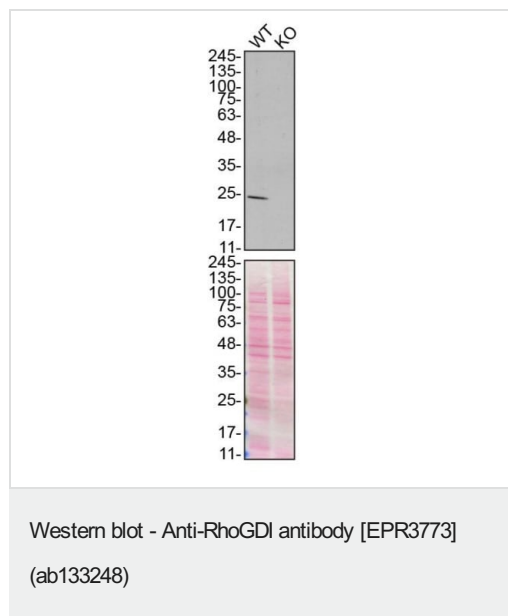
### Sequence similarities

Belongs to the Rho GDI family.

### Cellular localization

Cytoplasm.

## Images



**All lanes** : Anti-RhoGDI antibody [EPR3773] (ab133248) at 1/1000 dilution

**Lane 1** : Wild-type HEK293T cell lysate

**Lane 2** : ARHGDI knockout HEK293T cell lysate

Lysates/proteins at 20 µg per lane.

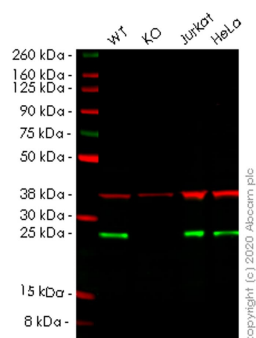
Performed under reducing conditions.

**Predicted band size:** 23 kDa

ab133248 was shown to react with aRHGDI in wild-type HEK293T cells in Western blot with loss of signal observed in ARHGDI knockout cell line **ab266447** (ARHGDI knockout cell lysate **ab257356**). Wild-type HEK293T and ARHGDI knockout cell lysates were subjected to SDS-PAGE. Membranes were blocked in

5% milk in TBST for 1 hr before incubation with ab133248 overnight at 4 °C at a 1/1000 dilution. Blots were incubated with goat anti-rabbit HRP secondary antibodies at 0.2µg/mL before imaging.

These data were provided by YCharOS Inc., an open science company with the mission of characterizing commercially available antibody reagents for all human proteins. Abcam and YCharOS are working together to help address the reproducibility crisis by enabling the life science community to better evaluate commercially available antibodies.



Western blot - Anti-RhoGDI antibody [EPR3773] (ab133248)

**All lanes :** Anti-RhoGDI antibody [EPR3773] (ab133248) at 1/1000 dilution

**Lane 1 :** Wild-type HEK293T cell lysate

**Lane 2 :** ARHGDI knockout HEK293T cell lysate

**Lane 3 :** Jurkat cell lysate

**Lane 4 :** HeLa cell lysate

Lysates/proteins at 20 µg per lane.

## Secondary

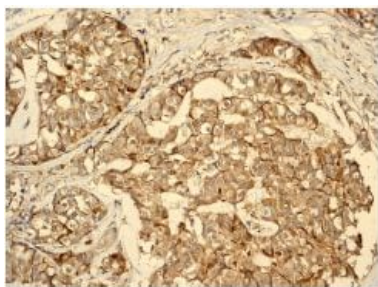
**All lanes :** Goat anti-Rabbit IgG H&L (IRDye® 800CW) preadsorbed ([ab216773](#)) at 1/10000 dilution

**Predicted band size:** 23 kDa

**Observed band size:** 23 kDa

**Lanes 1-4:** Merged signal (red and green). Green - ab133248 observed at 23 kDa. Red - loading control [ab8245](#) observed at 36 kDa.

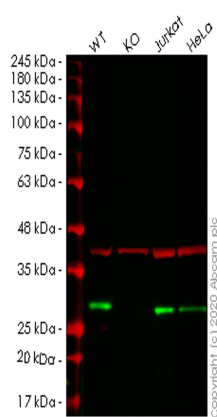
ab133248 Anti-RhoGDI antibody [EPR3773] was shown to specifically react with RhoGDI in wild-type HEK293T cells. Loss of signal was observed when knockout cell line [ab266446](#) (knockout cell lysate [ab257355](#)) was used. Wild-type and RhoGDI knockout samples were subjected to SDS-PAGE. ab133248 and Anti-GAPDH antibody [6C5] - Loading Control ([ab8245](#)) were incubated at room temperature for 2.5 hours at 1 in 1000 dilution and 1 in 20000 dilution respectively. Blots were developed with Goat anti-Rabbit IgG H&L (IRDye® 800CW) preadsorbed ([ab216773](#)) and Goat anti-Mouse IgG H&L (IRDye® 680RD) preadsorbed ([ab216776](#)) secondary antibodies at 1 in 20000 dilution for 1 hour at room temperature before imaging.



Immunohistochemistry (Formalin/PFA-fixed paraffin-embedded sections) - Anti-RhoGDI antibody [EPR3773] (ab133248)

Immunohistochemical analysis of paraffin embedded Human breast carcinoma tissue labelling RhoGDI with ab133248 at 1/100 dilution.

Perform heat mediated antigen retrieval with citrate buffer pH 6 before commencing with IHC staining protocol.



Western blot - Anti-RhoGDI antibody [EPR3773] (ab133248)

**All lanes** : Anti-RhoGDI antibody [EPR3773] (ab133248) at 1/1000 dilution

**Lane 1** : Wild-type HEK293T cell lysate

**Lane 2** : ARHGDI knockout HEK293T cell lysate

**Lane 3** : Jurkat cell lysate

**Lane 4** : HeLa cell lysate

Lysates/proteins at 20 µg per lane.

### Secondary

**All lanes** : Goat anti-Rabbit IgG H&L (IRDye® 800CW) preadsorbed ([ab216773](#)) at 1/10000 dilution

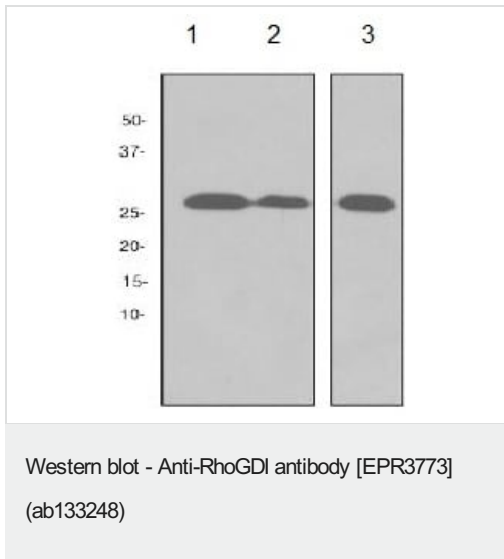
**Predicted band size:** 23 kDa

**Observed band size:** 27 kDa

**Lanes 1-4:** Merged signal (red and green). Green - ab133248 observed at 27 kDa. Red - loading control [ab8245](#) observed at 36 kDa.

ab133248 Anti-RhoGDI antibody [EPR3773] was shown to specifically react with RhoGDI in wild-type HEK293T cells. Loss of signal was observed when knockout cell line [ab266447](#) (knockout cell lysate [ab257356](#)) was used. Wild-type and RhoGDI knockout samples were subjected to SDS-PAGE. ab133248 and Anti-GAPDH antibody [6C5] - Loading Control ([ab8245](#)) were incubated overnight at 4°C at 1 in 1000 dilution and 1 in 20000 dilution respectively. Blots were developed with Goat anti-Rabbit IgG H&L (IRDye® 800CW) preadsorbed ([ab216773](#)) and Goat anti-Mouse

IgG H&L (IRDye® 680RD) preadsorbed (**ab216776**) secondary antibodies at 1 in 20000 dilution for 1 hour at room temperature before imaging.



**All lanes** : Anti-RhoGDI antibody [EPR3773] (ab133248) at 1/1000 dilution

**Lane 1** : Jurkat cell lysate

**Lane 2** : HeLa cell lysate

**Lane 3** : NIH3T3 cell lysate

Lysates/proteins at 10 µg per lane.

**Predicted band size:** 23 kDa

Why choose a recombinant antibody?

**Research with confidence**  
Consistent and reproducible results

**Long-term and scalable supply**  
Recombinant technology

**Success from the first experiment**  
Confirmed specificity

**Ethical standards compliant**  
Animal-free production

Anti-RhoGDI antibody [EPR3773] (ab133248)

**Please note:** All products are "FOR RESEARCH USE ONLY. NOT FOR USE IN DIAGNOSTIC PROCEDURES"

### Our Abpromise to you: Quality guaranteed and expert technical support

- Replacement or refund for products not performing as stated on the datasheet
- Valid for 12 months from date of delivery
- Response to your inquiry within 24 hours
- We provide support in Chinese, English, French, German, Japanese and Spanish
- Extensive multi-media technical resources to help you
- We investigate all quality concerns to ensure our products perform to the highest standards

If the product does not perform as described on this datasheet, we will offer a refund or replacement. For full details of the Abpromise,

please visit <https://www.abcam.com/abpromise> or contact our technical team.

#### **Terms and conditions**

---

- Guarantee only valid for products bought direct from Abcam or one of our authorized distributors