

## Product datasheet

# Anti-Ribonuclease H2, subunit A/RNASEH2A antibody ab92876

[3 References](#) [4 Images](#)

### Overview

<b>Product name</b>	Anti-Ribonuclease H2, subunit A/RNASEH2A antibody
<b>Description</b>	Mouse polyclonal to Ribonuclease H2, subunit A/RNASEH2A
<b>Host species</b>	Mouse
<b>Tested applications</b>	<b>Suitable for:</b> WB, ICC/IF
<b>Species reactivity</b>	<b>Reacts with:</b> Human
<b>Immunogen</b>	Recombinant full length protein within Human Ribonuclease H2, subunit A/RNASEH2A. The exact immunogen sequence used to generate this antibody is proprietary information. If additional detail on the immunogen is needed to determine the suitability of the antibody for your needs, please <b><a href="#">contact</a></b> our Scientific Support team to discuss your requirements. Database link: <b><a href="#">NP_006388.2</a></b>
<b>Positive control</b>	COLO 320 HSR cell lysate, Jurkat cell lysate and HeLa cell.
<b>General notes</b>	<p>The Life Science industry has been in the grips of a reproducibility crisis for a number of years. Abcam is leading the way in addressing this with our range of recombinant monoclonal antibodies and knockout edited cell lines for gold-standard validation. Please check that this product meets your needs before purchasing.</p> <p>If you have any questions, special requirements or concerns, please send us an inquiry and/or contact our Support team ahead of purchase. Recommended alternatives for this product can be found below, along with publications, customer reviews and Q&amp;As</p>

### Properties

<b>Form</b>	Liquid
<b>Storage instructions</b>	Shipped at 4°C. Upon delivery aliquot. Store at -20°C or -80°C. Avoid freeze / thaw cycle.
<b>Storage buffer</b>	pH: 7.4 Constituent: PBS
<b>Purity</b>	Protein A purified
<b>Clonality</b>	Polyclonal
<b>Isotype</b>	IgG

## Applications

### The Abpromise guarantee

Our **Abpromise guarantee** covers the use of ab92876 in the following tested applications.

The application notes include recommended starting dilutions; optimal dilutions/concentrations should be determined by the end user.

Application	Abreviews	Notes
WB		1/500 - 1/1000. Predicted molecular weight: 33 kDa.
ICC/IF		Use a concentration of 10 µg/ml.

## Target

### Function

Catalytic subunit of RNase HII, an endonuclease that specifically degrades the RNA of RNA:DNA hybrids. Participates in DNA replication, possibly by mediating the removal of lagging-strand Okazaki fragment RNA primers during DNA replication. Mediates the excision of single ribonucleotides from DNA:RNA duplexes.

### Involvement in disease

Aicardi-Goutieres syndrome 4

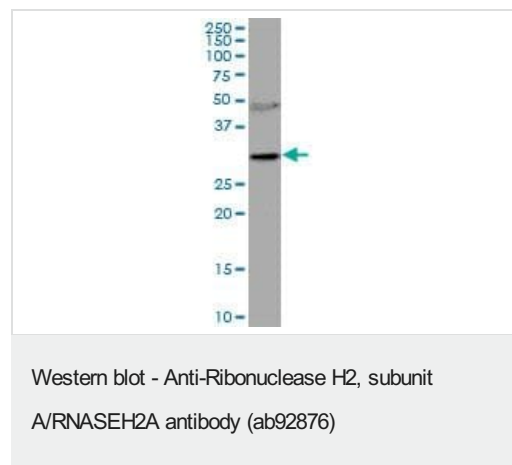
### Sequence similarities

Belongs to the RNase HII family. Eukaryotic subfamily.

### Cellular localization

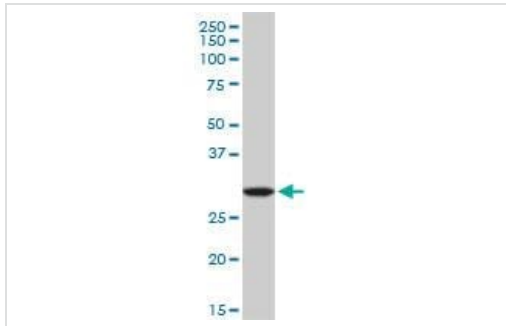
Nucleus.

## Images



Anti-Ribonuclease H2, subunit A/RNASEH2A antibody (ab92876)  
at 1/500 dilution + COLO 320 HSR at 50 µg

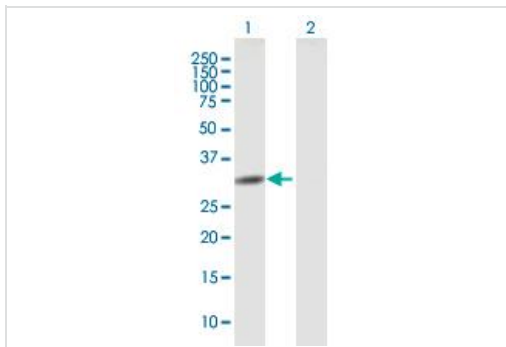
**Predicted band size:** 33 kDa



Western blot - Anti-Ribonuclease H2, subunit A/RNASEH2A antibody (ab92876)

Anti-Ribonuclease H2, subunit A/RNASEH2A antibody (ab92876)  
at 1/500 dilution + Jurkat cell lysate at 50 µg

**Predicted band size:** 33 kDa



Western blot - Anti-Ribonuclease H2, subunit A/RNASEH2A antibody (ab92876)

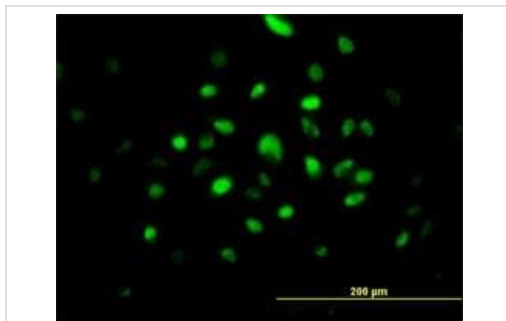
**All lanes :** Anti-Ribonuclease H2, subunit A/RNASEH2A antibody (ab92876) at 1/500 dilution

**Lane 1 :** Ribonuclease H2, subunit A/RNASEH2A transfected 293T cell lysate

**Lane 2 :** Non-transfected cell line.

Lysates/proteins at 50 µg per lane.

**Predicted band size:** 33 kDa



Immunocytochemistry/ Immunofluorescence - Anti-Ribonuclease H2, subunit A/RNASEH2A antibody (ab92876)

ab92876 at 10µg/ml staining Ribonuclease H2, subunit A/RNASEH2A on Hela cell by immunofluorescence

**Please note:** All products are "FOR RESEARCH USE ONLY. NOT FOR USE IN DIAGNOSTIC PROCEDURES"

### Our Abpromise to you: Quality guaranteed and expert technical support

- Replacement or refund for products not performing as stated on the datasheet
- Valid for 12 months from date of delivery
- Response to your inquiry within 24 hours

- We provide support in Chinese, English, French, German, Japanese and Spanish
- Extensive multi-media technical resources to help you
- We investigate all quality concerns to ensure our products perform to the highest standards

If the product does not perform as described on this datasheet, we will offer a refund or replacement. For full details of the Abpromise, please visit <https://www.abcam.com/abpromise> or contact our technical team.

#### **Terms and conditions**

---

- Guarantee only valid for products bought direct from Abcam or one of our authorized distributors