


Anti-Ribosomal protein S11/RPS11 antibody [EPR11487] ab175213

Recombinant RabMAb

[4 References](#) [6 Images](#)

Overview

Product name	Anti-Ribosomal protein S11/RPS11 antibody [EPR11487]
Description	Rabbit monoclonal [EPR11487] to Ribosomal protein S11/RPS11
Host species	Rabbit
Tested applications	Suitable for: Flow Cyt (Intra), WB, ICC/IF, IHC-P Unsuitable for: IP
Species reactivity	Reacts with: Human Predicted to work with: Mouse, Rat 
Immunogen	Synthetic peptide within Human Ribosomal protein S11/RPS11 aa 1-100 (Cysteine residue). The exact sequence is proprietary. Database link: P62280
Positive control	Jurkat, MCF7, HeLa and 293T cell lysates; Human thyroid carcinoma and uterus tissue; MCF7 and HeLa cells.
General notes	This product is a recombinant monoclonal antibody, which offers several advantages including: <ul style="list-style-type: none"> - High batch-to-batch consistency and reproducibility - Improved sensitivity and specificity - Long-term security of supply - Animal-free production For more information see here . Our RabMAb [®] technology is a patented hybridoma-based technology for making rabbit monoclonal antibodies. For details on our patents, please refer to RabMAb[®] patents .

Properties

Form	Liquid
Storage instructions	Shipped at 4°C. Store at +4°C short term (1-2 weeks). Upon delivery aliquot. Store at -20°C long term. Avoid freeze / thaw cycle.
Storage buffer	pH: 7.20 Preservative: 0.01% Sodium azide Constituents: 9% PBS, 40% Glycerol (glycerin, glycerine), 0.05% BSA, 50% Tissue culture

	supernatant
Purity	Protein A purified
Clonality	Monoclonal
Clone number	EPR11487
Isotype	IgG

Applications

The Abpromise guarantee Our **Abpromise guarantee** covers the use of ab175213 in the following tested applications. The application notes include recommended starting dilutions; optimal dilutions/concentrations should be determined by the end user.

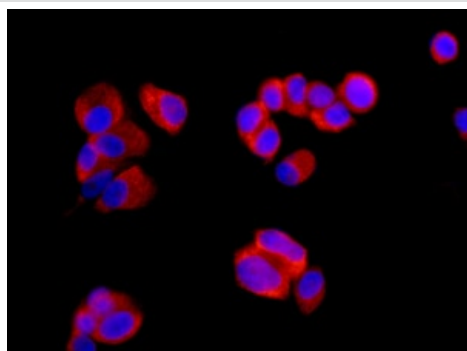
Application	Abreviews	Notes
Flow Cyt (Intra)		1/10 - 1/100. ab172730 - Rabbit monoclonal IgG, is suitable for use as an isotype control with this antibody.
WB		1/1000 - 1/5000. Predicted molecular weight: 18 kDa.
ICC/IF		1/100 - 1/250.
IHC-P		1/50 - 1/100. Perform heat mediated antigen retrieval with citrate buffer pH 6 before commencing with IHC staining protocol.

Application notes Is unsuitable for IP.

Target

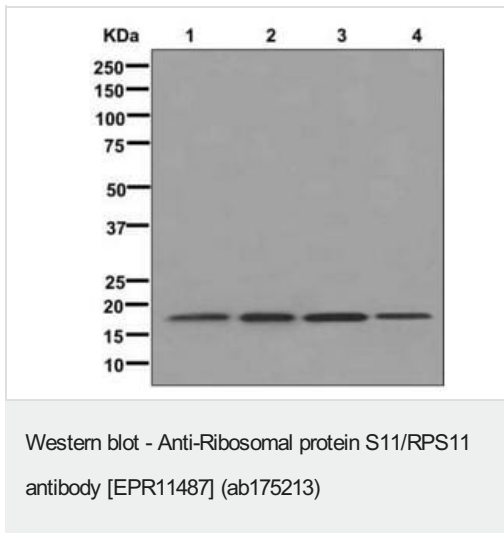
Sequence similarities Belongs to the ribosomal protein S17P family.

Images



Immunofluorescent staining of MCF7 cells labeling Ribosomal protein S11/RPS11 with ab175213 at 1/100 dilution (red). DAPI nuclear staining (blue).

Immunocytochemistry/ Immunofluorescence - Anti-Ribosomal protein S11/RPS11 antibody [EPR11487] (ab175213)



All lanes : Anti-Ribosomal protein S11/RPS11 antibody [EPR11487] (ab175213) at 1/1000 dilution

Lane 1 : Jurkat cell lysate

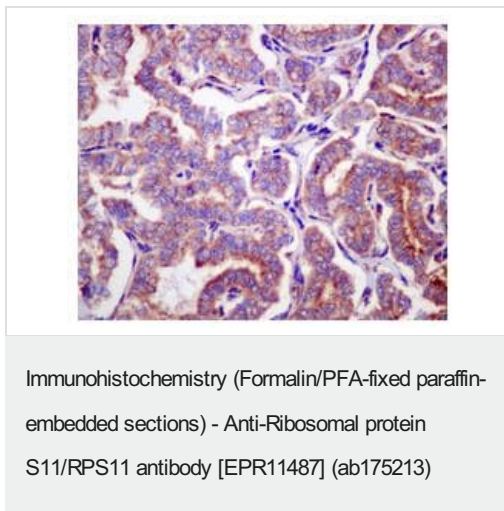
Lane 2 : MCF7 cell lysate

Lane 3 : HeLa cell lysate

Lane 4 : 293T cell lysate

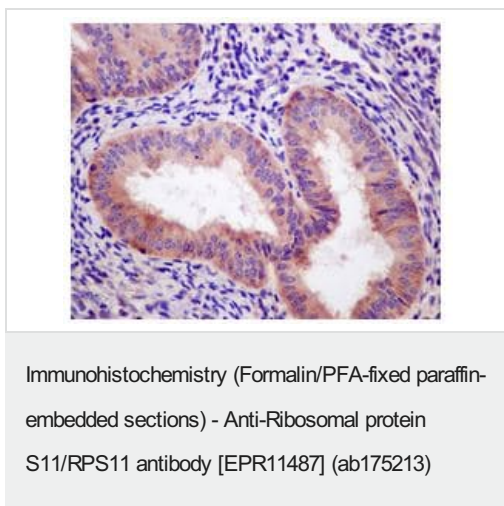
Lysates/proteins at 10 µg per lane.

Predicted band size: 18 kDa



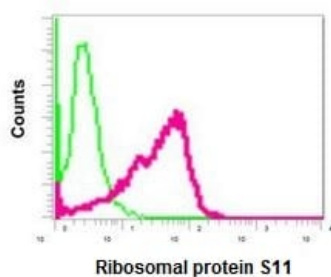
Immunohistochemical analysis of paraffin-embedded Human thyroid carcinoma tissue labeling Ribosomal protein S11/RPS11 with ab175213 at 1/50 dilution.

Perform heat mediated antigen retrieval with citrate buffer pH 6 before commencing with IHC staining protocol.



Immunohistochemical analysis of paraffin-embedded Human uterus tissue labeling Ribosomal protein S11/RPS11 with ab175213 at 1/50 dilution.

Perform heat mediated antigen retrieval with citrate buffer pH 6 before commencing with IHC staining protocol.



Intracellular flow cytometric analysis of permeabilized HeLa cells labeling Ribosomal protein S11/RPS11 with ab175213 at 1/10 dilution (red) compared to a Rabbit IgG negative control (green).

Flow Cytometry (Intracellular) - Anti-Ribosomal protein S11/RPS11 antibody [EPR11487] (ab175213)

Why choose a recombinant antibody?



Research with confidence
Consistent and reproducible results



Long-term and scalable supply
Recombinant technology



Success from the first experiment
Confirmed specificity



Ethical standards compliant
Animal-free production

Anti-Ribosomal protein S11/RPS11 antibody [EPR11487] (ab175213)

Please note: All products are "FOR RESEARCH USE ONLY. NOT FOR USE IN DIAGNOSTIC PROCEDURES"

Our Abpromise to you: Quality guaranteed and expert technical support

- Replacement or refund for products not performing as stated on the datasheet
- Valid for 12 months from date of delivery
- Response to your inquiry within 24 hours
- We provide support in Chinese, English, French, German, Japanese and Spanish
- Extensive multi-media technical resources to help you
- We investigate all quality concerns to ensure our products perform to the highest standards

If the product does not perform as described on this datasheet, we will offer a refund or replacement. For full details of the Abpromise, please visit <https://www.abcam.com/abpromise> or contact our technical team.

Terms and conditions

- Guarantee only valid for products bought direct from Abcam or one of our authorized distributors