

Anti-RILP antibody ab140188

[5 References](#) [1 Image](#)

Overview

Product name	Anti-RILP antibody
Description	Rabbit polyclonal to RILP
Host species	Rabbit
Specificity	At least two isoforms of RILP are known to exist; ab140188 will only detect the longer isoform.
Tested applications	Suitable for: WB
Species reactivity	Reacts with: Mouse
Immunogen	An 18 amino acid synthetic peptide near the center of Human RILP.
Positive control	A20 cell lysate
General notes	<p>The Life Science industry has been in the grips of a reproducibility crisis for a number of years. Abcam is leading the way in addressing this with our range of recombinant monoclonal antibodies and knockout edited cell lines for gold-standard validation. Please check that this product meets your needs before purchasing.</p> <p>If you have any questions, special requirements or concerns, please send us an inquiry and/or contact our Support team ahead of purchase. Recommended alternatives for this product can be found below, along with publications, customer reviews and Q&As</p>

Properties

Form	Liquid
Storage instructions	Shipped at 4°C. Store at +4°C short term (1-2 weeks). Upon delivery aliquot. Store at -20°C long term.
Storage buffer	<p>pH: 7.2</p> <p>Preservative: 0.02% Sodium azide</p> <p>Constituent: 99% PBS</p>
Purity	Immunogen affinity purified
Clonality	Polyclonal
Isotype	IgG

Applications

The Abpromise guarantee

Our **Abpromise guarantee** covers the use of ab140188 in the following tested applications.

The application notes include recommended starting dilutions; optimal dilutions/concentrations should be determined by the end user.

Application	Abreviews	Notes
WB		Use a concentration of 1 µg/ml. Predicted molecular weight: 44 kDa.

Target

Function

Rab effector playing a role in late endocytic transport to degradative compartments. Involved in the regulation of lysosomal morphology and distribution. Induces recruitment of dynein-dynactin motor complexes to Rab7A-containing late endosome and lysosome compartments. Promotes centripetal migration of phagosomes and the fusion of phagosomes with the late endosomes and lysosomes.

Tissue specificity

Ubiquitous. Strongly expressed in fetal heart, heart, stomach, spleen, adrenal gland, thyroid gland, salivary gland, fetal liver, liver and lung. Poorly expressed in brain.

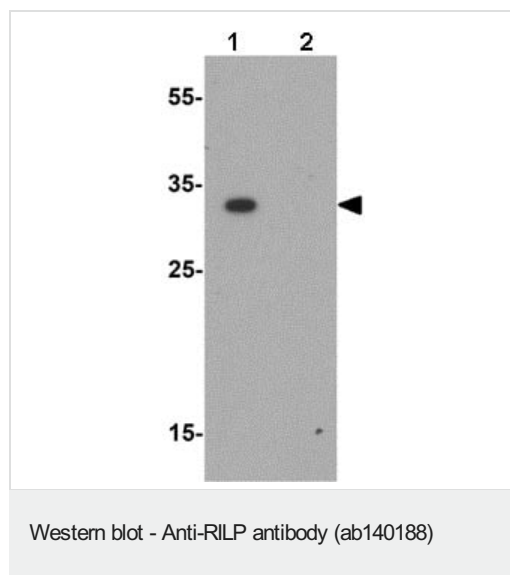
Sequence similarities

Contains 1 RILP-like domain.

Cellular localization

Endomembrane system. Late endosome membrane. Lysosome membrane. Cytoplasmic vesicle > phagosome membrane. Associated with late endosomal, lysosomal and phagosomal membranes. The interaction with RAB7A is necessary for its recruitment to phagosomes.

Images



All lanes : Anti-RILP antibody (ab140188) at 1 µg/ml

Lane 1 : A20 cell lysate

Lane 2 : A20 cell lysate with blocking peptide

Lysates/proteins at 15 µg per lane.

Predicted band size: 44 kDa

Please note: All products are "FOR RESEARCH USE ONLY. NOT FOR USE IN DIAGNOSTIC PROCEDURES"

Our Abpromise to you: Quality guaranteed and expert technical support

- Replacement or refund for products not performing as stated on the datasheet
- Valid for 12 months from date of delivery

- Response to your inquiry within 24 hours
- We provide support in Chinese, English, French, German, Japanese and Spanish
- Extensive multi-media technical resources to help you
- We investigate all quality concerns to ensure our products perform to the highest standards

If the product does not perform as described on this datasheet, we will offer a refund or replacement. For full details of the Abpromise, please visit <https://www.abcam.com/abpromise> or contact our technical team.

Terms and conditions

- Guarantee only valid for products bought direct from Abcam or one of our authorized distributors