



Product datasheet

Anti-RN-tre antibody ab233414

[1 References](#) [11 Images](#)

Overview

Product name	Anti-RN-tre antibody
Description	Rabbit polyclonal to RN-tre
Host species	Rabbit
Tested applications	Suitable for: WB, IHC-P
Species reactivity	Reacts with: Mouse, Human
Immunogen	Recombinant fragment (His-T7-tag) corresponding to Human RN-tre aa 1-300. Two N-terminal tags. Expressed in E.coli. Database link: Q92738
	 Run BLAST with  Run BLAST with
Positive control	WB: Recombinant human RN-tre protein; Human lung lysate; Mouse stomach and spleen lysates. IHC-P: Human breast cancer, liver, prostate, cerebrum, colorectal cancer, brain and glioma tissue.
General notes	<p>The Life Science industry has been in the grips of a reproducibility crisis for a number of years. Abcam is leading the way in addressing this with our range of recombinant monoclonal antibodies and knockout edited cell lines for gold-standard validation. Please check that this product meets your needs before purchasing.</p> <p>If you have any questions, special requirements or concerns, please send us an inquiry and/or contact our Support team ahead of purchase. Recommended alternatives for this product can be found below, along with publications, customer reviews and Q&As</p>

Properties

Form	Liquid
Storage instructions	Shipped at 4°C. Store at +4°C short term (1-2 weeks). Upon delivery aliquot. Store at -20°C long term. Avoid freeze / thaw cycle.
Storage buffer	pH: 7.40 Preservative: 0.02% Sodium azide Constituents: 44.12% PBS, 55.77% Glycerol (glycerin, glycerine)
Purity	Immunogen affinity purified
Purification notes	Antigen-specific affinity chromatography followed by Protein A affinity chromatography.
Clonality	Polyclonal

Isotype

IgG

Applications

The Abpromise guarantee

Our **Abpromise guarantee** covers the use of ab233414 in the following tested applications.

The application notes include recommended starting dilutions; optimal dilutions/concentrations should be determined by the end user.

Application	Abreviews	Notes
WB		Use a concentration of 0.2 - 2 µg/ml. Predicted molecular weight: 94 kDa.
IHC-P		Use a concentration of 5 - 20 µg/ml.

Target

Function

Acts as a GTPase-activating protein for RAB5A and RAB43. Involved in receptor trafficking. In complex with EPS8 inhibits internalization of EGFR. Involved in retrograde transport from the endocytic pathway to the Golgi apparatus. Involved in the transport of Shiga toxin from early and recycling endosomes to the trans-Golgi network. Required for structural integrity of the Golgi complex.

Tissue specificity

Widely expressed.

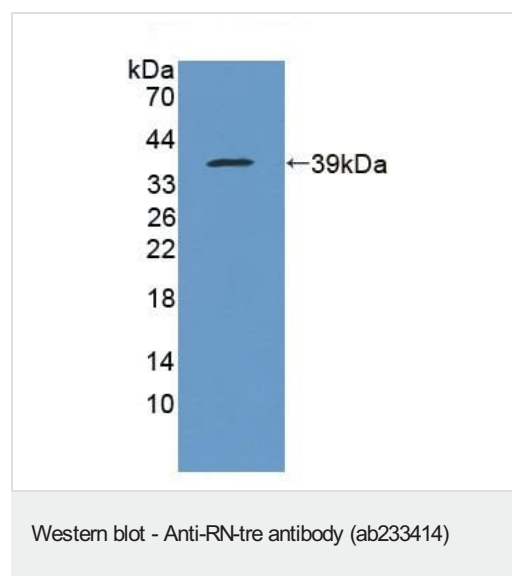
Sequence similarities

Contains 1 Rab-GAP TBC domain.

Cellular localization

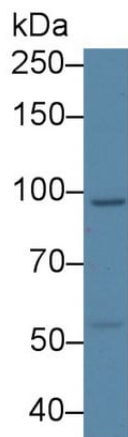
Golgi apparatus. Cytoplasmic vesicle.

Images



Anti-RN-tre antibody (ab233414) at 2 µg/ml + Recombinant human RN-tre protein

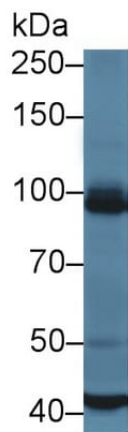
Predicted band size: 94 kDa



Western blot - Anti-RN-tre antibody (ab233414)

Anti-RN-tre antibody (ab233414) at 2 μ g/ml + Human lung tissue lysate

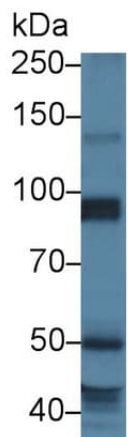
Predicted band size: 94 kDa



Western blot - Anti-RN-tre antibody (ab233414)

Anti-RN-tre antibody (ab233414) at 2 μ g/ml + Mouse stomach tissue lysate

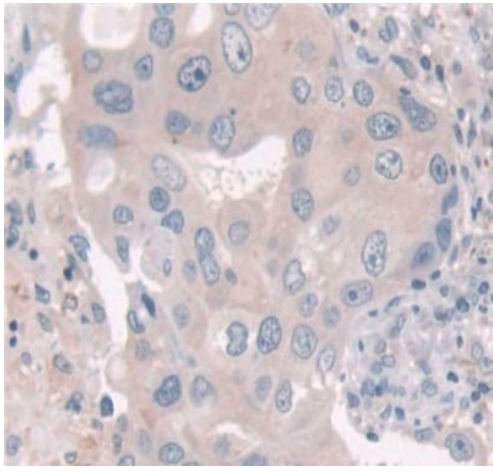
Predicted band size: 94 kDa



Western blot - Anti-RN-tre antibody (ab233414)

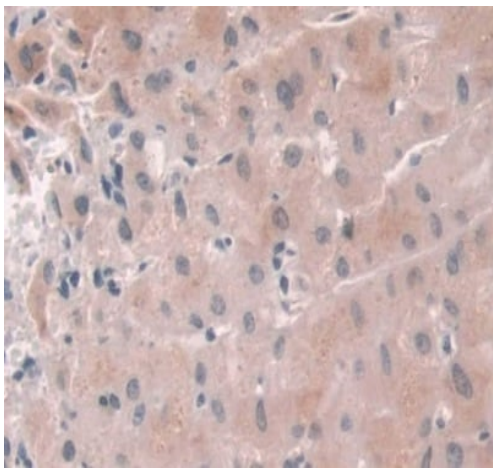
Anti-RN-tre antibody (ab233414) at 2 μ g/ml + Mouse spleen tissue lysate

Predicted band size: 94 kDa



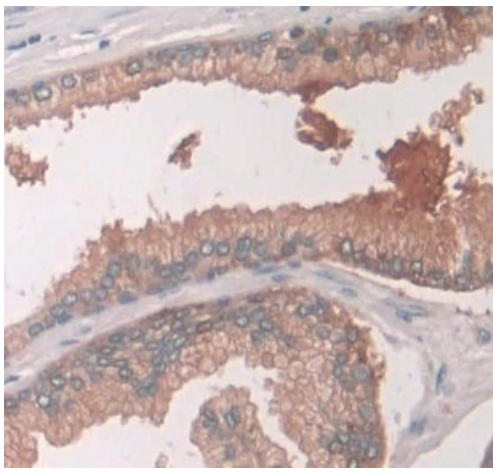
Immunohistochemistry (Formalin/PFA-fixed paraffin-embedded sections) - Anti-RN-tre antibody (ab233414)

Formalin-fixed, paraffin-embedded human breast cancer tissue stained for RN-tre using ab233414 at 20 µg/ml in immunohistochemical analysis. DAB staining.



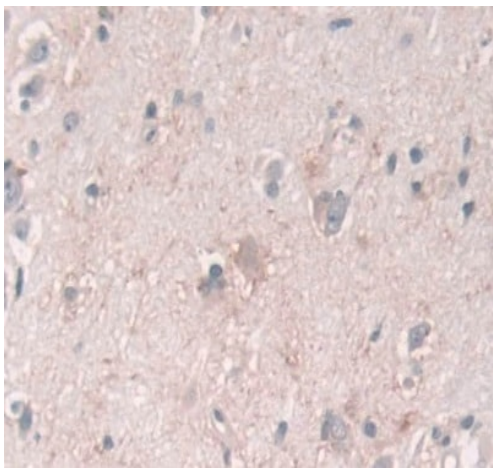
Immunohistochemistry (Formalin/PFA-fixed paraffin-embedded sections) - Anti-RN-tre antibody (ab233414)

Formalin-fixed, paraffin-embedded human liver tissue stained for RN-tre using ab233414 at 20 µg/ml in immunohistochemical analysis. DAB staining.



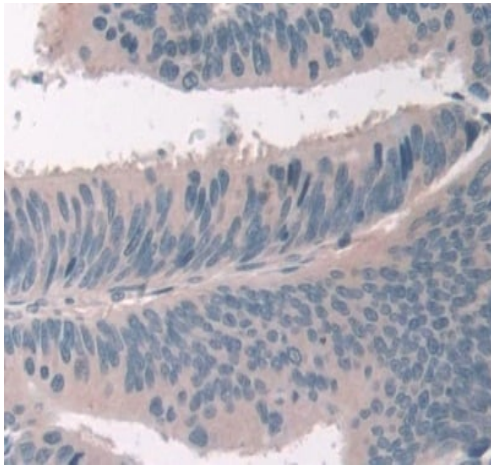
Immunohistochemistry (Formalin/PFA-fixed paraffin-embedded sections) - Anti-RN-tre antibody (ab233414)

Formalin-fixed, paraffin-embedded human prostate tissue stained for RN-tre using ab233414 at 20 µg/ml in immunohistochemical analysis. DAB staining.



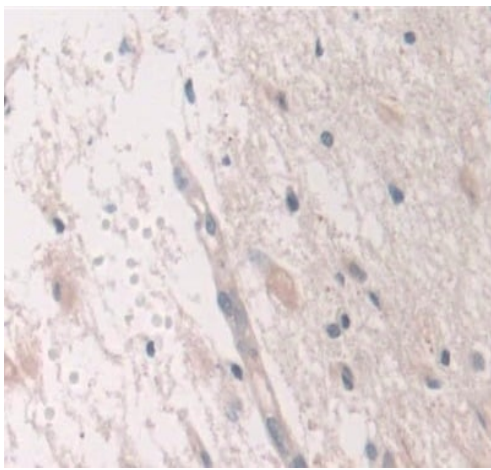
Immunohistochemistry (Formalin/PFA-fixed paraffin-embedded sections) - Anti-RN-tre antibody (ab233414)

Formalin-fixed, paraffin-embedded human cerebrum tissue stained for RN-tre using ab233414 at 20 µg/ml in immunohistochemical analysis. DAB staining.



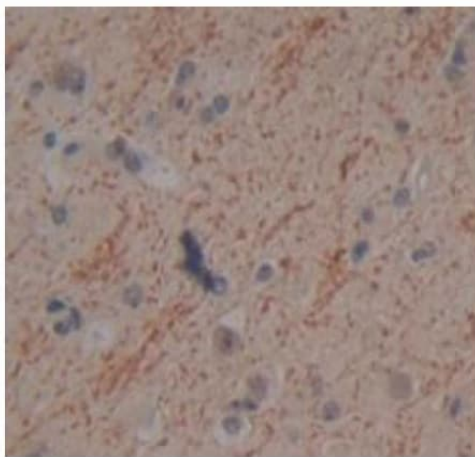
Formalin-fixed, paraffin-embedded human colorectal cancer tissue stained for RN-tre using ab233414 at 20 µg/ml in immunohistochemical analysis. DAB staining.

Immunohistochemistry (Formalin/PFA-fixed paraffin-embedded sections) - Anti-RN-tre antibody (ab233414)



Formalin-fixed, paraffin-embedded human glioma tissue stained for RN-tre using ab233414 at 20 µg/ml in immunohistochemical analysis. DAB staining.

Immunohistochemistry (Formalin/PFA-fixed paraffin-embedded sections) - Anti-RN-tre antibody (ab233414)



Immunohistochemistry (Formalin/PFA-fixed paraffin-embedded sections) - Anti-RN-tre antibody (ab233414)

Formalin-fixed, paraffin-embedded human brain tissue stained for RN-tre using ab233414 at 20 µg/ml in immunohistochemical analysis. DAB staining.

Please note: All products are "FOR RESEARCH USE ONLY. NOT FOR USE IN DIAGNOSTIC PROCEDURES"

Our Abpromise to you: Quality guaranteed and expert technical support

- Replacement or refund for products not performing as stated on the datasheet
- Valid for 12 months from date of delivery
- Response to your inquiry within 24 hours
- We provide support in Chinese, English, French, German, Japanese and Spanish
- Extensive multi-media technical resources to help you
- We investigate all quality concerns to ensure our products perform to the highest standards

If the product does not perform as described on this datasheet, we will offer a refund or replacement. For full details of the Abpromise, please visit <https://www.abcam.com/abpromise> or contact our technical team.

Terms and conditions

- Guarantee only valid for products bought direct from Abcam or one of our authorized distributors