

Product datasheet

Anti-RNA polymerase II RPB1 antibody [EPR1509Y] - ChIP Grade ab76123

Recombinant RabMAb

[14 References](#) [3 Images](#)

Overview

Product name	Anti-RNA polymerase II RPB1 antibody [EPR1509Y] - ChIP Grade
Description	Rabbit monoclonal [EPR1509Y] to RNA polymerase II RPB1 - ChIP Grade
Host species	Rabbit
Tested applications	Suitable for: WB, ChIP Unsuitable for: Flow Cyt, ICC/IF, IHC-P or IP
Species reactivity	Reacts with: Human
Immunogen	Synthetic peptide within Human RNA polymerase II RPB1 aa 100-200 (N terminal). The exact sequence is proprietary.
Positive control	HeLa whole cell lysate (ab150035).
General notes	<p>This product is a recombinant monoclonal antibody, which offers several advantages including:</p> <ul style="list-style-type: none"> - High batch-to-batch consistency and reproducibility - Improved sensitivity and specificity - Long-term security of supply - Animal-free production <p>For more information see here.</p> <p>Our RabMAb[®] technology is a patented hybridoma-based technology for making rabbit monoclonal antibodies. For details on our patents, please refer to RabMAb[®] patents.</p> <p>Mouse, Rat: We have preliminary internal testing data to indicate this antibody may not react with these species. Please contact us for more information.</p>

Properties

Form	Liquid
Storage instructions	Shipped at 4°C. Store at -20°C. Stable for 12 months at -20°C.
Storage buffer	pH: 7.20 Preservative: 0.01% Sodium azide Constituents: 59% PBS, 40% Glycerol (glycerin, glycerine), 0.5% BSA
Purity	Protein A purified

Clonality	Monoclonal
Clone number	EPR1509Y
Isotype	IgG

Applications

The Abpromise guarantee Our **Abpromise guarantee** covers the use of ab76123 in the following tested applications. The application notes include recommended starting dilutions; optimal dilutions/concentrations should be determined by the end user.

Application	Abreviews	Notes
WB		1/500 - 1/1000. Detects a band of approximately 270 kDa (predicted molecular weight: 217 kDa).
ChIP		Use at an assay dependent concentration.

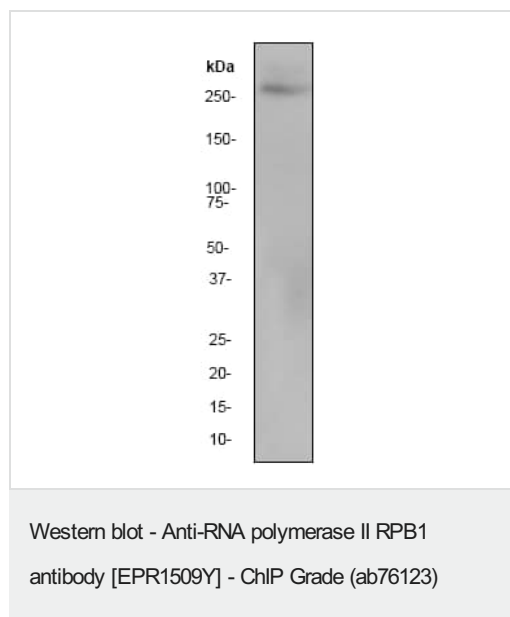
Application notes Is unsuitable for Flow Cyt, ICC/IF, IHC-P or IP.

Target

Relevance RPB1 is a subunit of RNA polymerase II which catalyses transcription of RNA from DNA. RPB1 forms the polymerase active center together with the second largest subunit. Pol II is the central component of the basal RNA polymerase II transcription machinery. It is composed of mobile elements that move relative to each other. RPB1 is part of the core element with the central large cleft, the clamp element that moves to open and close the cleft and the jaws that are thought to grab the incoming DNA template.

Cellular localization Nuclear

Images



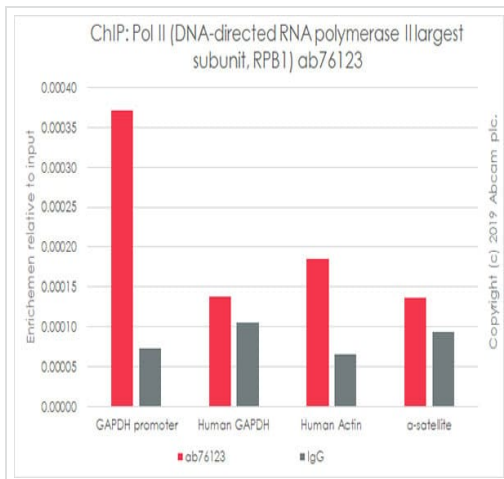
Anti-RNA polymerase II RPB1 antibody [EPR1509Y] - ChIP Grade (ab76123) at 1/2000 dilution + HeLa cell lysate at 10 µg

Secondary

Goat anti-rabbit HRP at 1/2000 dilution

Predicted band size: 217 kDa

Observed band size: 270 kDa



ChIP - Anti-RNA polymerase II RPB1 antibody
[EPR1509Y] - ChIP Grade (ab76123)

Chromatin was prepared from 293T cells according to the Abcam Dual-X-ChIP protocol*. Cells were fixed with 1.5 mM EGS for 30mins and then formaldehyde for 10min.

The ChIP was performed with 25 µg of chromatin, 5 µg of ab76123 (red), or 5 µg of rabbit normal IgG **ab172730** (gray) and 20 µl of Protein A/G sepharose beads. The immunoprecipitated DNA was quantified by real time PCR (Taqman approach for active and inactive loci, Sybr green approach for heterochromatic loci).

Primers and probes are commercial primers from Paper

*[http://www.abcam.com/resources?](http://www.abcam.com/resources?keywords=X%20ChIP%20protocol)

keywords=X%20ChIP%20protocol

Why choose a recombinant antibody?

Research with confidence
Consistent and reproducible results

Long-term and scalable supply
Recombinant technology

Success from the first experiment
Confirmed specificity

Ethical standards compliant
Animal-free production

Anti-RNA polymerase II RPB1 antibody [EPR1509Y]
- ChIP Grade (ab76123)

Please note: All products are "FOR RESEARCH USE ONLY. NOT FOR USE IN DIAGNOSTIC PROCEDURES"

Our Abpromise to you: Quality guaranteed and expert technical support

- Replacement or refund for products not performing as stated on the datasheet
- Valid for 12 months from date of delivery
- Response to your inquiry within 24 hours
- We provide support in Chinese, English, French, German, Japanese and Spanish
- Extensive multi-media technical resources to help you
- We investigate all quality concerns to ensure our products perform to the highest standards

If the product does not perform as described on this datasheet, we will offer a refund or replacement. For full details of the Abpromise, please visit <https://www.abcam.com/abpromise> or contact our technical team.

Terms and conditions

- Guarantee only valid for products bought direct from Abcam or one of our authorized distributors