


## Product datasheet

### Anti-RNF20 antibody [EPR13563(B)] ab181032

Recombinant RabMAb

[1 References](#) [4 Images](#)

#### Overview

<b>Product name</b>	Anti-RNF20 antibody [EPR13563(B)]
<b>Description</b>	Rabbit monoclonal [EPR13563(B)] to RNF20
<b>Host species</b>	Rabbit
<b>Tested applications</b>	<b>Suitable for:</b> Flow Cyt (Intra), WB, IP <b>Unsuitable for:</b> IHC-P
<b>Species reactivity</b>	<b>Reacts with:</b> Human <b>Predicted to work with:</b> Mouse 
<b>Immunogen</b>	Synthetic peptide. This information is proprietary to Abcam and/or its suppliers.
<b>Positive control</b>	293T, HeLa, Jurkat, and MCF7 cell lysates. Jurkat cells.
<b>General notes</b>	<p>This product is a recombinant monoclonal antibody, which offers several advantages including:</p> <ul style="list-style-type: none"> <li>- High batch-to-batch consistency and reproducibility</li> <li>- Improved sensitivity and specificity</li> <li>- Long-term security of supply</li> <li>- Animal-free production</li> </ul> <p>For more information <a href="#">see here</a>.</p> <p>Our RabMAb<sup>®</sup> technology is a patented hybridoma-based technology for making rabbit monoclonal antibodies. For details on our patents, please refer to <a href="#">RabMAb<sup>®</sup> patents</a>.</p> <p>Rat: We have preliminary internal testing data to indicate this antibody may not react with this species. Please contact us for more information.</p>

#### Properties

<b>Form</b>	Liquid
<b>Storage instructions</b>	Shipped at 4°C. Store at +4°C short term (1-2 weeks). Upon delivery aliquot. Store at -20°C long term. Avoid freeze / thaw cycle.
<b>Storage buffer</b>	pH: 7.20 Preservative: 0.01% Sodium azide Constituents: 9% PBS, 40% Glycerol (glycerin, glycerine), 0.05% BSA, 50% Tissue culture supernatant

<b>Purity</b>	Tissue culture supernatant
<b>Clonality</b>	Monoclonal
<b>Clone number</b>	EPR13563(B)
<b>Isotype</b>	IgG

## Applications

**The Abpromise guarantee** Our **Abpromise guarantee** covers the use of ab181032 in the following tested applications.

The application notes include recommended starting dilutions; optimal dilutions/concentrations should be determined by the end user.

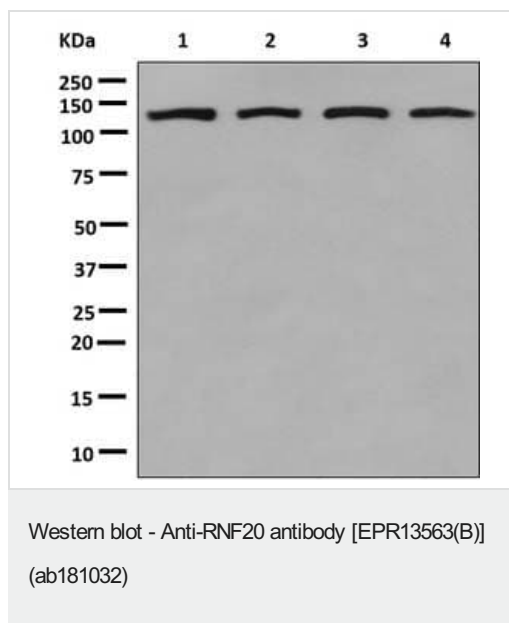
Application	Abreviews	Notes
<b>Flow Cyt (Intra)</b>		1/10 - 1/100. <b>ab172730</b> - Rabbit monoclonal IgG, is suitable for use as an isotype control with this antibody.
<b>WB</b>		1/10000 - 1/50000. Predicted molecular weight: 114 kDa.
<b>IP</b>		1/10 - 1/100.

**Application notes** Is unsuitable for IHC-P.

## Target

<b>Function</b>	Component of the RNF20/40 E3 ubiquitin-protein ligase complex that mediates monoubiquitination of 'Lys-120' of histone H2B (H2BK120ub1). H2BK120ub1 gives a specific tag for epigenetic transcriptional activation and is also prerequisite for histone H3 'Lys-4' and 'Lys-79' methylation (H3K4me and H3K79me, respectively). It thereby plays a central role in histone code and gene regulation. The RNF20/40 complex forms a H2B ubiquitin ligase complex in cooperation with the E2 enzyme UBE2A or UBE2B; reports about the cooperation with UBE2E1/UBCH are contradictory. Required for transcriptional activation of Hox genes. Recruited to the MDM2 promoter, probably by being recruited by p53/TP53, and thereby acts as a transcriptional coactivator. Mediates the polyubiquitination of isoform 2 of PA2G4 in cancer cells leading to its proteasome-mediated degradation.
<b>Tissue specificity</b>	Expressed in the normal brain and also in malignant gliomas (at protein level).
<b>Pathway</b>	Protein modification; protein ubiquitination.
<b>Sequence similarities</b>	Belongs to the BRE1 family. Contains 1 RING-type zinc finger.
<b>Cellular localization</b>	Nucleus.

## Images



**All lanes :** Anti-RNF20 antibody [EPR13563(B)] (ab181032) at 1/10000 dilution

**Lane 1 :** 293T (Human embryonic kidney epithelial cell) cell lysate

**Lane 2 :** HeLa cell lysate

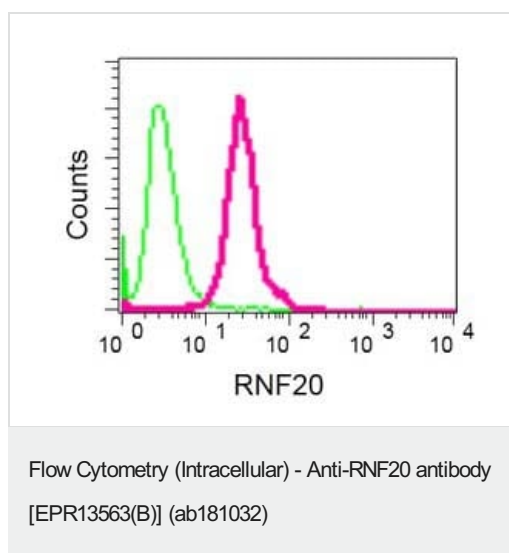
**Lane 3 :** Jurkat cell lysate

**Lane 4 :** MCF7 cell lysate

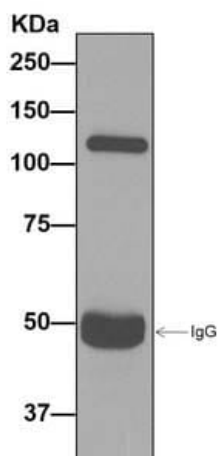
Lysates/proteins at 10 µg per lane.

Developed using the ECL technique.

**Predicted band size:** 114 kDa



Intracellular flow cytometric analysis of permeabilized Jurkat cells labeling RNF20 with ab181032 (red) at 1/10 dilution or a rabbit IgG (negative) (green).



Western blot analysis on immunoprecipitation pellet from 293 cell lysate labeling RNF20 with ab181032 at 1/10 dilution.

Immunoprecipitation - Anti-RNF20 antibody  
[EPR13563(B)] (ab181032)

Why choose a  
recombinant antibody?



**Research with  
confidence**  
Consistent and  
reproducible results



**Long-term and  
scalable supply**  
Recombinant  
technology



**Success from the  
first experiment**  
Confirmed  
specificity



**Ethical standards  
compliant**  
Animal-free  
production

Anti-RNF20 antibody [EPR13563(B)] (ab181032)

**Please note:** All products are "FOR RESEARCH USE ONLY. NOT FOR USE IN DIAGNOSTIC PROCEDURES"

### Our Abpromise to you: Quality guaranteed and expert technical support

- Replacement or refund for products not performing as stated on the datasheet
- Valid for 12 months from date of delivery
- Response to your inquiry within 24 hours
- We provide support in Chinese, English, French, German, Japanese and Spanish
- Extensive multi-media technical resources to help you
- We investigate all quality concerns to ensure our products perform to the highest standards

If the product does not perform as described on this datasheet, we will offer a refund or replacement. For full details of the Abpromise, please visit <https://www.abcam.com/abpromise> or contact our technical team.

## Terms and conditions

---

- Guarantee only valid for products bought direct from Abcam or one of our authorized distributors