



Product datasheet

Anti-RNQ1 antibody - C-terminal ab188279

1 Image

Overview

Product name	Anti-RNQ1 antibody - C-terminal
Description	Rabbit polyclonal to RNQ1 - C-terminal
Host species	Rabbit
Tested applications	Suitable for: WB
Species reactivity	Reacts with: Saccharomyces cerevisiae
Immunogen	Synthetic peptide corresponding to Saccharomyces cerevisiae RNQ1 aa 350 to the C-terminus (C terminal). Database link: P25367
	<div>  Run BLAST with  Run BLAST with </div>
Positive control	S. cerevisiae extract (pelleted fraction) induced with galactose.
General notes	<p>The Life Science industry has been in the grips of a reproducibility crisis for a number of years. Abcam is leading the way in addressing this with our range of recombinant monoclonal antibodies and knockout edited cell lines for gold-standard validation. Please check that this product meets your needs before purchasing.</p> <p>If you have any questions, special requirements or concerns, please send us an inquiry and/or contact our Support team ahead of purchase. Recommended alternatives for this product can be found below, along with publications, customer reviews and Q&As</p>

Properties

Form	Liquid
Storage instructions	Shipped at 4°C. Store at +4°C short term (1-2 weeks). Upon delivery aliquot. Store at -20°C long term. Avoid freeze / thaw cycle.
Storage buffer	pH: 6 Preservative: 0.09% Sodium azide Constituents: 0.1% BSA, 50% Glycerol (glycerin, glycerine), 49% PBS
Purity	Immunogen affinity purified
Clonality	Polyclonal
Isotype	IgG

Applications

The Abpromise guarantee

Our **Abpromise guarantee** covers the use of ab188279 in the following tested applications.

The application notes include recommended starting dilutions; optimal dilutions/concentrations should be determined by the end user.

Application	Abreviews	Notes
WB		1/300. Predicted molecular weight: 43 kDa.

Target

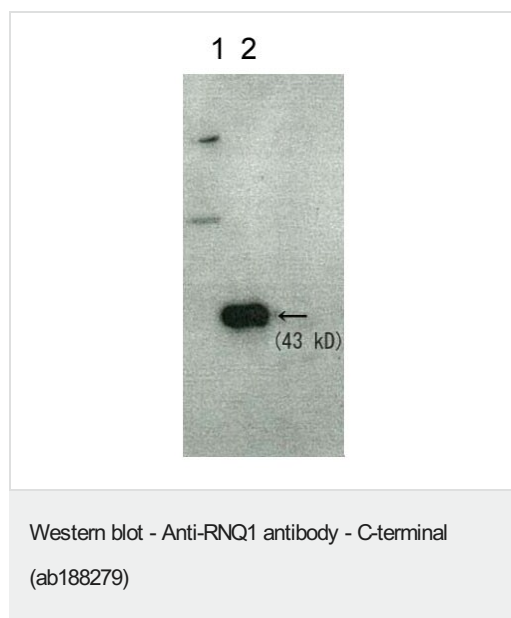
Relevance

Function: Transferable epigenetic modifier which forms a prion responsible for the non-Mendelian trait [PIN+]. The native function of the soluble protein is unknown.

Cellular localization

Cytoplasmic and Nuclear

Images



All lanes : Anti-RNQ1 antibody - C-terminal (ab188279) at 1/300 dilution

Lane 1 : S. cerevisiae extract; soluble fraction

Lane 2 : S. cerevisiae extract; pelleted fraction

Predicted band size: 43 kDa

Cells were harvested after 24 h of galactose induction.

Please note: All products are "FOR RESEARCH USE ONLY. NOT FOR USE IN DIAGNOSTIC PROCEDURES"

Our Abpromise to you: Quality guaranteed and expert technical support

- Replacement or refund for products not performing as stated on the datasheet
- Valid for 12 months from date of delivery
- Response to your inquiry within 24 hours
- We provide support in Chinese, English, French, German, Japanese and Spanish
- Extensive multi-media technical resources to help you
- We investigate all quality concerns to ensure our products perform to the highest standards

If the product does not perform as described on this datasheet, we will offer a refund or replacement. For full details of the Abpromise,

please visit <https://www.abcam.com/abpromise> or contact our technical team.

Terms and conditions

- Guarantee only valid for products bought direct from Abcam or one of our authorized distributors