



Product datasheet

Anti-Robo2 antibody ab244331

★★★★★ [1 Abreviews](#) [6 Images](#)

Overview

Product name	Anti-Robo2 antibody
Description	Rabbit polyclonal to Robo2
Host species	Rabbit
Tested applications	Suitable for: ICC/IF, IHC-P
Species reactivity	Reacts with: Mouse, Human
Immunogen	Recombinant fragment corresponding to Human Robo2 aa 900-1100. Database link: Q9HCK4
	<div>  Run BLAST with  Run BLAST with </div>
Positive control	IHC-P: Mouse embryo E14, human cerebral cortex and placenta tissue; ICC/IF: SH-SY5Y cells.
General notes	<p>The Life Science industry has been in the grips of a reproducibility crisis for a number of years. Abcam is leading the way in addressing this with our range of recombinant monoclonal antibodies and knockout edited cell lines for gold-standard validation. Please check that this product meets your needs before purchasing.</p> <p>If you have any questions, special requirements or concerns, please send us an inquiry and/or contact our Support team ahead of purchase. Recommended alternatives for this product can be found below, along with publications, customer reviews and Q&As</p>

Properties

Form	Liquid
Storage instructions	Shipped at 4°C. Store at +4°C short term (1-2 weeks). Upon delivery aliquot. Store at -20°C long term. Avoid freeze / thaw cycle.
Storage buffer	pH: 7.20 Preservative: 0.02% Sodium azide Constituents: PBS, 40% Glycerol
Purity	Immunogen affinity purified
Clonality	Polyclonal
Isotype	IgG

Applications

The Abpromise guarantee

Our **Abpromise guarantee** covers the use of ab244331 in the following tested applications.

The application notes include recommended starting dilutions; optimal dilutions/concentrations should be determined by the end user.

Application	Abreviews	Notes
ICC/IF		Use a concentration of 0.25 - 2 µg/ml. Fixation/Permeabilization: PFA/Triton X-100.
IHC-P		1/20 - 1/50. Perform heat mediated antigen retrieval with citrate buffer pH 6 before commencing with IHC staining protocol.

Target

Function

Receptor for SLIT2, and probably SLIT1, which are thought to act as molecular guidance cue in cellular migration, including axonal navigation at the ventral midline of the neural tube and projection of axons to different regions during neuronal development.

Involvement in disease

Defects in ROBO2 are the cause of vesicoureteral reflux type 2 (VUR2) [MIM:610878]. VUR is a complex, genetically heterogeneous developmental disorder characterized by the retrograde flow of urine from the bladder into the ureter and is associated with reflux nephropathy, the cause of 15% of end-stage renal disease in children and young adults.

Note=A chromosomal aberration involving ROBO2 is a cause of multiple congenital abnormalities, including severe bilateral VUR with ureterovesical junction defects. Translocation t(Y;3)(p11;p12) with PCDH11Y. This translocation disrupts ROBO2 and produces dominant-negative ROBO2 proteins that abrogate SLIT-ROBO signaling in vitro.

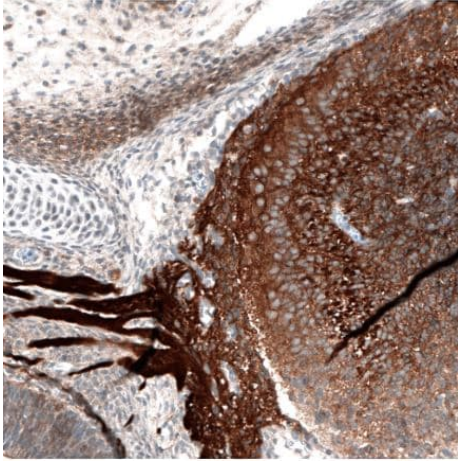
Sequence similarities

Belongs to the immunoglobulin superfamily. ROBO family.
Contains 3 fibronectin type-III domains.
Contains 5 Ig-like C2-type (immunoglobulin-like) domains.

Cellular localization

Membrane.

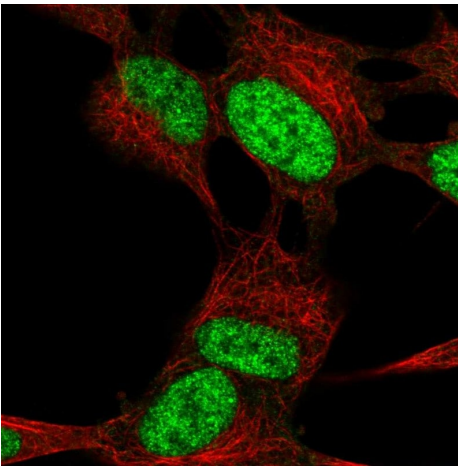
Images



Immunohistochemistry (Formalin/PFA-fixed paraffin-embedded sections) - Anti-Robo2 antibody (ab244331)

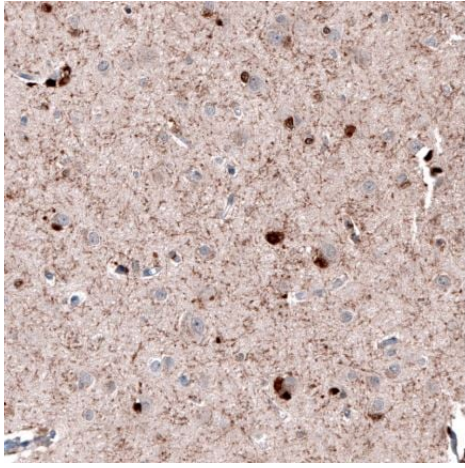
Immunohistochemical analysis of mouse embryo E14 tissue labeling Robo2 in developing olfactory bulb and olfactory nerve with ab244331 at 1/20 dilution.

Performed heat mediated antigen retrieval with citrate buffer pH 6 before commencing with IHC staining protocol.



Immunocytochemistry/ Immunofluorescence - Anti-Robo2 antibody (ab244331)

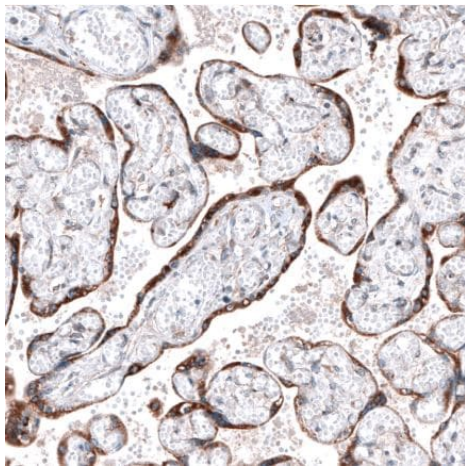
Immunofluorescent analysis of SH-SY5Y (Human neuroblastoma cell line from bone marrow) cells labeling Robo2 (green) in the nucleus with ab244331 at 2 µg/ml.



Immunohistochemistry (Formalin/PFA-fixed paraffin-embedded sections) - Anti-Robo2 antibody (ab244331)

Immunohistochemical analysis of human cerebral cortex tissue labeling Robo2 in neuronal processes in neuropil with ab244331 at 1/20 dilution.

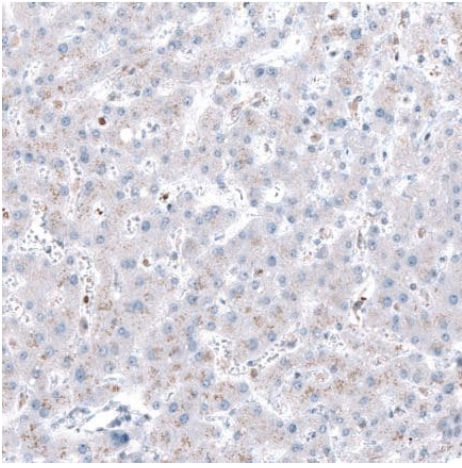
Performed heat mediated antigen retrieval with citrate buffer pH 6 before commencing with IHC staining protocol.



Immunohistochemistry (Formalin/PFA-fixed paraffin-embedded sections) - Anti-Robo2 antibody (ab244331)

Immunohistochemical analysis of human placenta tissue labeling Robo2 in the cytoplasm of trophoblastic cells with ab244331 at 1/20 dilution.

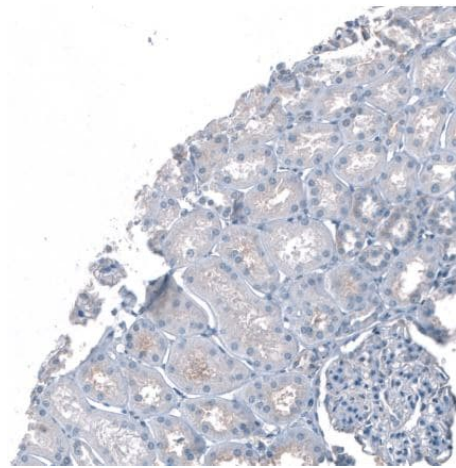
Performed heat mediated antigen retrieval with citrate buffer pH 6 before commencing with IHC staining protocol.



Immunohistochemistry (Formalin/PFA-fixed paraffin-embedded sections) - Anti-Robo2 antibody (ab244331)

Immunohistochemical analysis of human liver tissue labeling Robo2 (very weak positivity) with ab244331 at 1/20 dilution.

Performed heat mediated antigen retrieval with citrate buffer pH 6 before commencing with IHC staining protocol.



Immunohistochemistry (Formalin/PFA-fixed paraffin-embedded sections) - Anti-Robo2 antibody (ab244331)

Immunohistochemical analysis of human kidney tissue labeling Robo2 with ab244331 at 1/20 dilution. Negative control.

Performed heat mediated antigen retrieval with citrate buffer pH 6 before commencing with IHC staining protocol.

Please note: All products are "FOR RESEARCH USE ONLY. NOT FOR USE IN DIAGNOSTIC PROCEDURES"

Our Abpromise to you: Quality guaranteed and expert technical support

- Replacement or refund for products not performing as stated on the datasheet
- Valid for 12 months from date of delivery
- Response to your inquiry within 24 hours
- We provide support in Chinese, English, French, German, Japanese and Spanish
- Extensive multi-media technical resources to help you
- We investigate all quality concerns to ensure our products perform to the highest standards

If the product does not perform as described on this datasheet, we will offer a refund or replacement. For full details of the Abpromise,

please visit <https://www.abcam.com/abpromise> or contact our technical team.

Terms and conditions

- Guarantee only valid for products bought direct from Abcam or one of our authorized distributors