

Anti-Robo4 antibody ab180824

[2 References](#) [1 Image](#)

Overview

Product name	Anti-Robo4 antibody
Description	Guinea pig polyclonal to Robo4
Host species	Guinea pig
Tested applications	Suitable for: WB
Species reactivity	Reacts with: Mouse, Human
Immunogen	Full length native protein (purified) corresponding to Robo4.
General notes	<p>The Life Science industry has been in the grips of a reproducibility crisis for a number of years. Abcam is leading the way in addressing this with our range of recombinant monoclonal antibodies and knockout edited cell lines for gold-standard validation. Please check that this product meets your needs before purchasing.</p> <p>If you have any questions, special requirements or concerns, please send us an inquiry and/or contact our Support team ahead of purchase. Recommended alternatives for this product can be found below, along with publications, customer reviews and Q&As</p>

Properties

Form	Liquid
Storage instructions	Shipped at 4°C. Store at +4°C short term (1-2 weeks). Upon delivery aliquot. Store at -20°C long term. Avoid freeze / thaw cycle.
Purity	Whole antiserum
Clonality	Polyclonal
Isotype	IgG

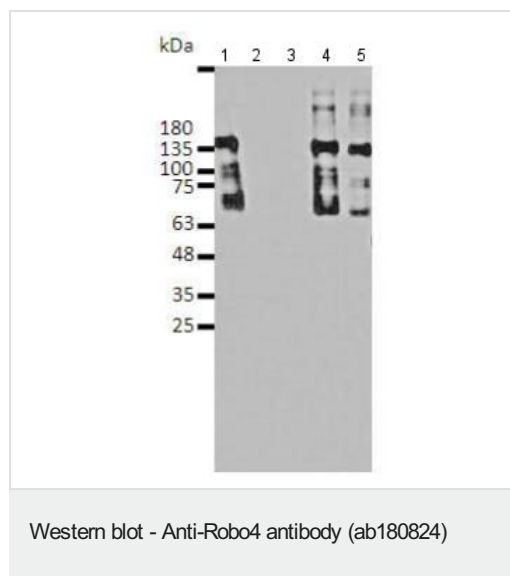
Applications

The Abpromise guarantee Our **Abpromise guarantee** covers the use of ab180824 in the following tested applications. The application notes include recommended starting dilutions; optimal dilutions/concentrations should be determined by the end user.

Application	Abreviews	Notes
WB		1/1000. Predicted molecular weight: 108 kDa.

Target

Images



All lanes : Anti-Robo4 antibody (ab180824)

Lane 1 : HEK 293 cells transiently transfected with mouse Robo4 (reduced conditions)

Lane 2 : HEK 293 cell lysate (untransfected)

Lane 3 : HEK 293 cell lysate (untransfected) (non-reduced)

Lane 4 : HEK 293 cells transiently transfected with mouse Robo4 (non-reduced)

Lane 5 : HEK 293 cells transiently transfected with human Robo4 (reduced conditions)

Lysates/proteins at 3 µg per lane.

Predicted band size: 108 kDa

Please note: All products are "FOR RESEARCH USE ONLY. NOT FOR USE IN DIAGNOSTIC PROCEDURES"

Our Abpromise to you: Quality guaranteed and expert technical support

- Replacement or refund for products not performing as stated on the datasheet
- Valid for 12 months from date of delivery
- Response to your inquiry within 24 hours
- We provide support in Chinese, English, French, German, Japanese and Spanish
- Extensive multi-media technical resources to help you
- We investigate all quality concerns to ensure our products perform to the highest standards

If the product does not perform as described on this datasheet, we will offer a refund or replacement. For full details of the Abpromise, please visit <https://www.abcam.com/abpromise> or contact our technical team.

Terms and conditions

- Guarantee only valid for products bought direct from Abcam or one of our authorized distributors