

Anti-ROCK2 (phospho Y722) antibody ab182648

[5 References](#) [1 Image](#)

Overview

Product name	Anti-ROCK2 (phospho Y722) antibody
Description	Rabbit polyclonal to ROCK2 (phospho Y722)
Host species	Rabbit
Tested applications	Suitable for: WB
Species reactivity	Reacts with: Rat
Immunogen	Synthetic peptide corresponding to Human ROCK2 (phospho Y722) conjugated to Keyhole Limpet Haemocyanin (KLH). Peptide sequence around phosphorylation site of Tyrosine 722 (K-I-Y(p)-E-S) derived from Human ROCK2. Database link: Q75116
Positive control	Rat kidney extract.
General notes	<p>The Life Science industry has been in the grips of a reproducibility crisis for a number of years. Abcam is leading the way in addressing this with our range of recombinant monoclonal antibodies and knockout edited cell lines for gold-standard validation. Please check that this product meets your needs before purchasing.</p> <p>If you have any questions, special requirements or concerns, please send us an inquiry and/or contact our Support team ahead of purchase. Recommended alternatives for this product can be found below, along with publications, customer reviews and Q&As</p>

Properties

Form	Liquid
Storage instructions	Shipped at 4°C. Store at +4°C short term (1-2 weeks). Upon delivery aliquot. Store at -20°C long term. Avoid freeze / thaw cycle.
Storage buffer	pH: 7.40 Preservative: 0.02% Sodium azide Constituents: 49% PBS, 0.88% Sodium chloride, 50% Glycerol
Purity	PBS (without Mg ²⁺ and Ca ²⁺) Immunogen affinity purified
Purification notes	ab182648 was purified by affinity-chromatography using epitope-specific phosphopeptide. Non-phospho specific antibodies were removed by chromatography using non-phosphopeptide.

Clonality	Polyclonal
Isotype	IgG

Applications

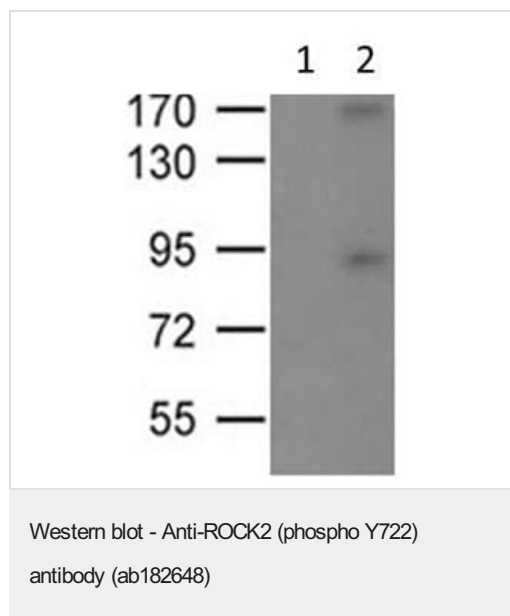
The Abpromise guarantee Our **Abpromise guarantee** covers the use of ab182648 in the following tested applications. The application notes include recommended starting dilutions; optimal dilutions/concentrations should be determined by the end user.

Application	Abreviews	Notes
WB		1/500 - 1/1000. Predicted molecular weight: 161 kDa.

Target

Function	Regulates the assembly of the actin cytoskeleton. Promotes formation of stress fibers and of focal adhesion complexes. Plays a role in smooth muscle contraction.
Sequence similarities	<p>Belongs to the protein kinase superfamily. AGC Ser/Thr protein kinase family.</p> <p>Contains 1 AGC-kinase C-terminal domain.</p> <p>Contains 1 PH domain.</p> <p>Contains 1 phorbol-ester/DAG-type zinc finger.</p> <p>Contains 1 protein kinase domain.</p> <p>Contains 1 REM (Hr1) repeat.</p>
Post-translational modifications	Phosphorylated upon DNA damage, probably by ATM or ATR.
Cellular localization	Cytoplasm. Cell membrane. Cytoplasmic, and associated with actin microfilaments and the plasma membrane.

Images



All lanes : Anti-ROCK2 (phospho Y722) antibody (ab182648) at 1/500 dilution

Lane 1 : Rat kidney extract with antigen-specific peptide

Lane 2 : Rat kidney extract

Predicted band size: 161 kDa

Please note: All products are "FOR RESEARCH USE ONLY. NOT FOR USE IN DIAGNOSTIC PROCEDURES"

Our Abpromise to you: Quality guaranteed and expert technical support

- Replacement or refund for products not performing as stated on the datasheet
- Valid for 12 months from date of delivery
- Response to your inquiry within 24 hours

- We provide support in Chinese, English, French, German, Japanese and Spanish
- Extensive multi-media technical resources to help you
- We investigate all quality concerns to ensure our products perform to the highest standards

If the product does not perform as described on this datasheet, we will offer a refund or replacement. For full details of the Abpromise, please visit <https://www.abcam.com/abpromise> or contact our technical team.

Terms and conditions

- Guarantee only valid for products bought direct from Abcam or one of our authorized distributors