


Product datasheet

Anti-RP105 antibody [EPR14720] α b184956

Recombinant **RabMAb**

[2 References](#) [5 Images](#)

Overview

Product name	Anti-RP105 antibody [EPR14720]
Description	Rabbit monoclonal [EPR14720] to RP105
Host species	Rabbit
Tested applications	Suitable for: WB, IHC-P, ICC/IF Unsuitable for: Flow Cyt or IP
Species reactivity	Reacts with: Human Predicted to work with: Mouse 
Immunogen	Recombinant fragment. This information is proprietary to Abcam and/or its suppliers.
Positive control	Ramos, human lymph node, Daudi lysates, human spleen tissue, Ramos cells
General notes	<p>This product is a recombinant monoclonal antibody, which offers several advantages including:</p> <ul style="list-style-type: none"> - High batch-to-batch consistency and reproducibility - Improved sensitivity and specificity - Long-term security of supply - Animal-free production <p>For more information see here.</p> <p>Our RabMAb[®] technology is a patented hybridoma-based technology for making rabbit monoclonal antibodies. For details on our patents, please refer to RabMAb[®] patents.</p>

Properties

Form	Liquid
Storage instructions	Shipped at 4°C. Store at +4°C short term (1-2 weeks). Upon delivery aliquot. Store at -20°C. Avoid freeze / thaw cycle.
Storage buffer	pH: 7.2 Preservative: 0.01% Sodium azide Constituents: 59% PBS, 40% Glycerol (glycerin, glycerine), 0.05% BSA
Purity	Protein A purified
Clonality	Monoclonal
Clone number	EPR14720

Isotype

IgG

Applications

The Abpromise guarantee

Our **Abpromise guarantee** covers the use of ab184956 in the following tested applications.

The application notes include recommended starting dilutions; optimal dilutions/concentrations should be determined by the end user.

Application	Abreviews	Notes
WB		1/1000 - 1/2000. Predicted molecular weight: 74 kDa.
IHC-P		1/500. Perform heat mediated antigen retrieval with Tris/EDTA buffer pH 9.0 before commencing with IHC staining protocol.
ICC/IF		1/100.

Application notes

Is unsuitable for Flow Cyt or IP.

Target

Function

May cooperate with MD-1 and TLR4 to mediate the innate immune response to bacterial lipopolysaccharide (LPS) in B-cells. Leads to NF-kappa-B activation. Also involved in the life/death decision of B-cells.

Tissue specificity

Expressed mainly on mature peripheral B cells. Detected in spleen, lymph node and appendix. Not detected in pre-B and -T cells.

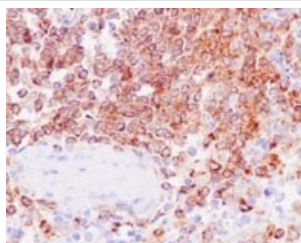
Sequence similarities

Belongs to the Toll-like receptor family.
Contains 19 LRR (leucine-rich) repeats.
Contains 1 LRRCT domain.

Cellular localization

Cell membrane.

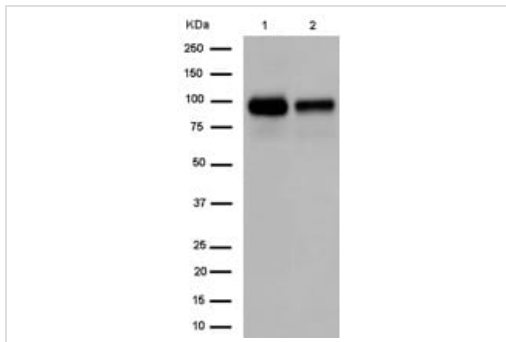
Images



Immunohistochemistry (Formalin/PFA-fixed paraffin-embedded sections) - Anti-RP105 antibody
[EPR14720] (ab184956)

Immunohistochemical analysis of paraffin-embedded human spleen tissue labeling RP105 with ab184956 at 1/500 dilution and HRP Polymer to Rabbit IgG. Counterstained with Hematoxylin.

Perform heat mediated antigen retrieval with EDTA buffer pH 9 before commencing with IHC staining protocol.



Western blot - Anti-RP105 antibody [EPR14720]
(ab184956)

All lanes : Anti-RP105 antibody [EPR14720] (ab184956) at 1/2000 dilution

Lane 1 : Human lymph node lysate

Lane 2 : Ramos cell lysate

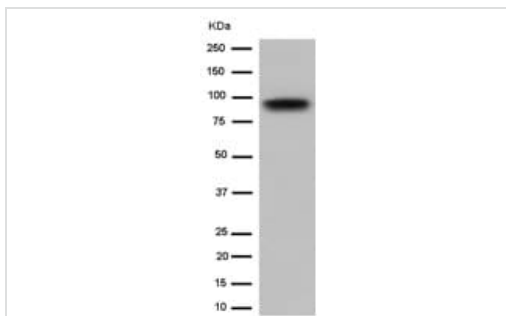
Lysates/proteins at 20 µg per lane.

Secondary

All lanes : Goat Anti-Rabbit IgG, (H+L), Peroxidase conjugated at 1/1000 dilution

Predicted band size: 74 kDa

Additional bands at: 90 kDa. We are unsure as to the identity of these extra bands.



Western blot - Anti-RP105 antibody [EPR14720]
(ab184956)

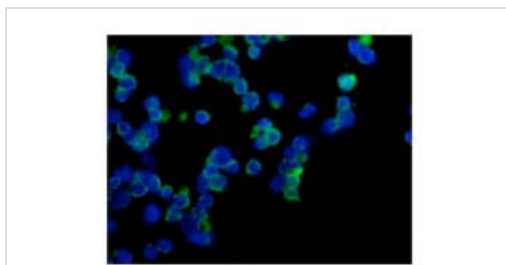
Anti-RP105 antibody [EPR14720] (ab184956) at 1/2000 dilution + Daudi cell lysate at 10 µg

Secondary

Goat Anti-Rabbit IgG, (H+L), Peroxidase conjugated at 1/1000 dilution

Predicted band size: 74 kDa

Additional bands at: 90 kDa. We are unsure as to the identity of these extra bands.



Immunocytochemistry/ Immunofluorescence - Anti-RP105 antibody [EPR14720] (ab184956)

Immunocytochemical analysis of Ramos cells labeling RP105 with ab184956 at 1/100 dilution and Goat anti rabbit IgG (Alexa Fluor®488) at 1/200 dilution. Counterstained with DAPI. Cells fixation: -20°C Acetone.

Why choose a recombinant antibody?



Research with confidence
Consistent and reproducible results



Long-term and scalable supply
Recombinant technology



Success from the first experiment
Confirmed specificity



Ethical standards compliant
Animal-free production

Anti-RP105 antibody [EPR14720] (ab184956)

Please note: All products are "FOR RESEARCH USE ONLY. NOT FOR USE IN DIAGNOSTIC PROCEDURES"

Our Abpromise to you: Quality guaranteed and expert technical support

- Replacement or refund for products not performing as stated on the datasheet
- Valid for 12 months from date of delivery
- Response to your inquiry within 24 hours
- We provide support in Chinese, English, French, German, Japanese and Spanish
- Extensive multi-media technical resources to help you
- We investigate all quality concerns to ensure our products perform to the highest standards

If the product does not perform as described on this datasheet, we will offer a refund or replacement. For full details of the Abpromise, please visit <https://www.abcam.com/abpromise> or contact our technical team.

Terms and conditions

- Guarantee only valid for products bought direct from Abcam or one of our authorized distributors