

Product datasheet

Anti-RPB3 antibody [1Y26] ab202893

[4 References](#) [1 Image](#)

Overview

Product name	Anti-RPB3 antibody [1Y26]
Description	Mouse monoclonal [1Y26] to RPB3
Host species	Mouse
Tested applications	Suitable for: WB
Species reactivity	Reacts with: Saccharomyces cerevisiae
Immunogen	Recombinant fragment corresponding to Saccharomyces cerevisiae RPB3. Database link: P16370
Positive control	Saccharomyces cerevisiae lysate.
General notes	<p>The Life Science industry has been in the grips of a reproducibility crisis for a number of years. Abcam is leading the way in addressing this with our range of recombinant monoclonal antibodies and knockout edited cell lines for gold-standard validation. Please check that this product meets your needs before purchasing.</p> <p>If you have any questions, special requirements or concerns, please send us an inquiry and/or contact our Support team ahead of purchase. Recommended alternatives for this product can be found below, along with publications, customer reviews and Q&As</p>

Properties

Form	Liquid
Storage instructions	Shipped at 4°C. Store at +4°C short term (1-2 weeks). Upon delivery aliquot. Store at -20°C long term. Avoid freeze / thaw cycle.
Storage buffer	pH: 7.20 Constituent: 100% PBS
	0.22 µm filtered
Purity	Protein G purified
Clonality	Monoclonal
Clone number	1Y26
Isotype	IgG1

Applications

The Abpromise guarantee

Our **Abpromise guarantee** covers the use of ab202893 in the following tested applications.

The application notes include recommended starting dilutions; optimal dilutions/concentrations should be determined by the end user.

Application	Abreviews	Notes
WB		Use at an assay dependent concentration. Predicted molecular weight: 35 kDa.

Target

Function

DNA-dependent RNA polymerase catalyzes the transcription of DNA into RNA using the four ribonucleoside triphosphates as substrates. Component of RNA polymerase II which synthesizes mRNA precursors and many functional non-coding RNAs. Pol II is the central component of the basal RNA polymerase II transcription machinery. It is composed of mobile elements that move relative to each other. RPB3 is part of the core element with the central large cleft and the clamp element that moves to open and close the cleft.

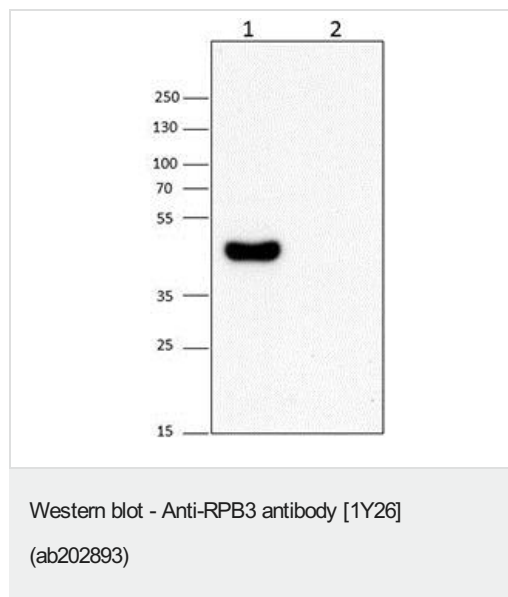
Sequence similarities

Belongs to the archaeal RpoD/eukaryotic RPB3 RNA polymerase subunit family.

Cellular localization

Nucleus.

Images



All lanes : Anti-RPB3 antibody [1Y26] (ab202893) at 1 µg/ml

Lane 1 : Saccharomyces cerevisiae lysate

Lane 2 : Jurkat cell lysate

Secondary

All lanes : HRP anti-mouse IgG at 1/1000 dilution

Developed using the ECL technique.

Predicted band size: 35 kDa

Please note: All products are "FOR RESEARCH USE ONLY. NOT FOR USE IN DIAGNOSTIC PROCEDURES"

Our Abpromise to you: Quality guaranteed and expert technical support

- Replacement or refund for products not performing as stated on the datasheet
- Valid for 12 months from date of delivery
- Response to your inquiry within 24 hours

- We provide support in Chinese, English, French, German, Japanese and Spanish
- Extensive multi-media technical resources to help you
- We investigate all quality concerns to ensure our products perform to the highest standards

If the product does not perform as described on this datasheet, we will offer a refund or replacement. For full details of the Abpromise, please visit <https://www.abcam.com/abpromise> or contact our technical team.

Terms and conditions

- Guarantee only valid for products bought direct from Abcam or one of our authorized distributors